

EPSON[®]
EPSON STYLUS[®] COLOR
850Ne

Setup Guide



Printed on recycled paper with at least 10% post-consumer content

All rights reserved. No part of this publication may be reproduced, stored in a retrieval system, or transmitted in any form or by any means, electronic, mechanical, photocopying, recording, or otherwise, without the prior written permission of SEIKO EPSON CORPORATION. The information contained herein is designed only for use with this EPSON printer. EPSON is not responsible for any use of this information as applied to other printers.

Neither SEIKO EPSON CORPORATION nor its affiliates shall be liable to the purchaser of this product or third parties for damages, losses, costs, or expenses incurred by purchaser or third parties as a result of: accident, misuse, or abuse of this product or unauthorized modifications, repairs, or alterations to this product, or (excluding the U.S.) failure to strictly comply with SEIKO EPSON CORPORATION's operating and maintenance instructions.

SEIKO EPSON CORPORATION shall not be liable for any damages or problems arising from the use of any options or any consumable products other than those designated as Original EPSON Products or EPSON Approved Products by SEIKO EPSON CORPORATION.

EPSON and EPSON Stylus are registered trademarks of SEIKO EPSON CORPORATION.

General Notice: Other product names used herein are for identification purposes only and may be trademarks of their respective owners. EPSON disclaims any and all rights in those marks.

Setup Guide

This *Setup Guide* summarizes the process of setting up your printer and configuring it to work with most networks. For more information about your printer and printer software, see your *User's Guide*. For more information about your printer's Ethernet card and networking, see the *Administrator's Guide*.

Using Your Software

Your printer comes with the following software:

- ▶ Printer driver for Windows® and Macintosh®
- ▶ EPSON Net!2 utility (for Windows® 98, Windows® 95, Windows NT® 4.0, and Macintosh) that allows you to configure your printer for protocols including Novell® NetWare,® TCP/IP, and AppleTalk.®
- ▶ EPSON Status Monitor 2 for Windows that allows you to monitor your printer over the network and use TCP/IP for printing in Windows 98/Windows 95 peer-to-peer networks.
- ▶ EPSON Driver Disk Creation Utility that lets you create diskettes for systems that don't have CD-ROM drives.

Setup Overview



Note:
If you need to make diskettes and use them to install any software programs, see Appendix A in your *Administrator's Guide*.

- 1** Follow the steps in this guide to set up the printer, install the ink cartridges, and connect your Ethernet card to the network.
- 2** **Install the Network Software**
See page 3 to determine whether you should install EPSON Net!2 and EPSON Status Monitor 2 for your protocol and operating system.
- 3** **Configure the Printer**
See page 3 to determine where you should look in this *Setup Guide* and the *Administrator's Guide* to configure the printer and Ethernet card to work on your network.
- 4** **Set Up the Workstations**
For most networks, you need to install the printer driver on each Windows or Macintosh workstation that uses the printer. If you like, you can also install EPSON Status Monitor 2 on Windows workstations.
- 5** **Print a Test Page**
You can print a test page in Windows 98, Windows 95 or Windows NT 4.0. This ensures that the network, printer, and printer driver are configured correctly and working.

Network Configurations

See the table below to find your network configuration (operating system and protocol), and determine what to install and where to find instructions for configuring your network.* For many operating systems, you can change configuration settings using the Ethernet card's internal home page. See the *Administrator's Guide* for more information.

Available Network Configurations

Operating system	Network protocol	What you need to install and configure
Windows NT 4.0 (Service Pack 3, or higher)	TCP/IP	<ol style="list-style-type: none">1. EPSON Net!2 (p.11)2. EPSON Status Monitor 2 (p. 13)3. IP address for the Ethernet card (p. 28)4. Printer driver on each workstation** (p. 36)
	NetBEUI (TCP/IP must also be installed)	<ol style="list-style-type: none">1. EPSON Net!2 (p.11)2. EPSON Status Monitor 2 (p.13)3. IP address for the Ethernet card (p. 28)4. NetBEUI settings on the Ethernet card home page*** (p. 34)5. Printer driver on each workstation** (p. 36)
	Novell NetWare	<ol style="list-style-type: none">1. EPSON Net!2 (p.11 and p. 16)2. EPSON Status Monitor 2 (p.13)3. Setup using NwAdmin (p. 16) or PCONSOLE (<i>Administrator's Guide</i>, Chapter 4)4. Printer driver on each workstation** (p. 36)

Setup Guide: Network Configurations

Available Network Configurations

Operating system	Network protocol	What you need to install and configure
Windows 98, Windows 95	TCP/IP	<ol style="list-style-type: none"> 1. EPSON Net!2 (p.11) 2. EPSON Status Monitor 2 on each workstation (p. 13) 3. IP address for the Ethernet card (p. 28) 4. Printer driver on each workstation (p. 36)
	NetBEUI (TCP/IP must also be installed)	<ol style="list-style-type: none"> 1. EPSON Net!2 (p.11) 2. EPSON Status Monitor 2 (p.13) 3. IP address for the Ethernet card (p. 28) 4. NetBEUI settings on the Ethernet card home page*** (p. 34) 5. Printer driver on each workstation (p. 36)
	Novell NetWare	<ol style="list-style-type: none"> 1. EPSON Net!2 (p.11 and p. 16) 2. EPSON Status Monitor 2 (p.13) 3. Setup using NwAdmin (p. 16) or PCONSOLE (<i>Administrator's Guide</i>, Chapter 4) 4. Printer driver on each workstation (p. 36)
Windows 3.1x	Novell NetWare, Windows NT Server	Windows 3.1x acts as a client only; you can't use a Windows 3.1x workstation to configure the Ethernet card or monitor the printer. Install the printer driver on each workstation and change the printer's port setting. (p. 36)
Macintosh	AppleTalk	<ol style="list-style-type: none"> 1. EPSON Net!2 (p. 13 and p. 32) 2. Printer driver on each system (p. 36)
UNIX	TCP/IP (lpr, ftp)	<ol style="list-style-type: none"> 1. Install a printer driver and filter. (See your UNIX documentation.) 2. Configure the printer for lpr or ftp. (<i>Administrator's Guide</i>, Chapter 5.)
IBM OS/2 Warp	NetBEUI	(<i>Administrator's Guide</i> , Chapter 6.)
	TCP/IP	(<i>Administrator's Guide</i> , Chapter 6)

*If you need to create diskettes and install your software from them, see Appendix A in your *Administrator's Guide*.

**If you have Windows NT 4.0 Server, you may only need to install the driver on the server. See your Windows NT documentation.

***To use the Ethernet card home page, you must have TCP/IP setup on your network, as well as one of the following Internet browsers: Microsoft Internet Explorer, version 4.0 or later; Netscape Navigator™, version 3.0 or later.

1 Set Up the Printer

Unpack the Printer



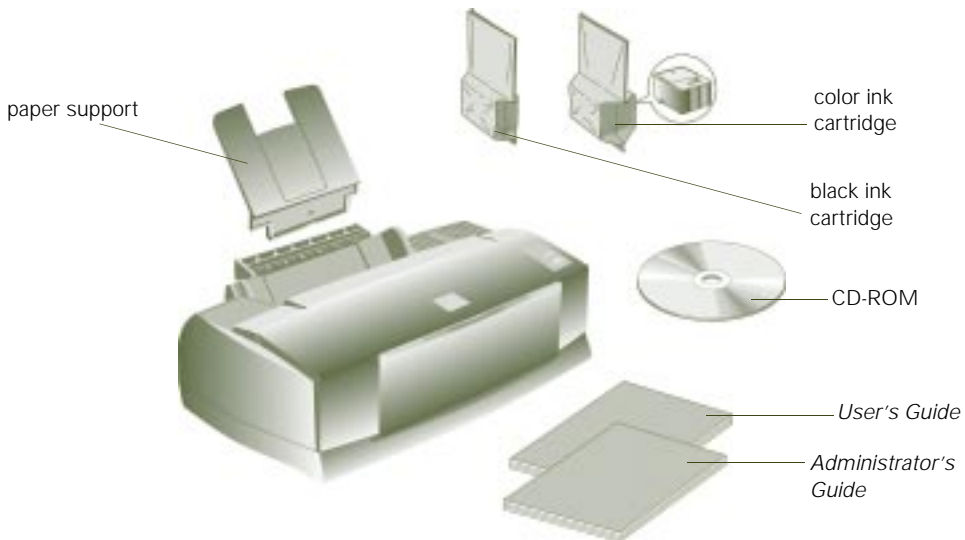
Note:

To connect your printer's Ethernet card to the network, you need a twisted pair (10BaseT) cable with an RJ-45 connector.

Remove any packing material from the printer. See the Notice Sheet in the box for details.

Make sure you've got all these items:

- ▶ Your printer and paper support
- ▶ One color and one black ink cartridge package
- ▶ The EPSON Stylus® COLOR 850Ne CD-ROM
- ▶ The EPSON Media Pak containing sample ink jet paper
- ▶ Your *User's Guide* and *Administrator's Guide*
- ▶ A network cable (not supplied)



Attach the Paper Support

Insert the paper support in the top slot on the back of the printer.




Note:
Follow all the safety instructions in the Introduction of your *User's Guide*.



Do not put the printer:


- ▶ In an area with high temperature or humidity
- ▶ In direct sunlight or dusty conditions
- ▶ Near sources of heat or electromagnetic interference, such as loudspeakers or cordless telephone base units

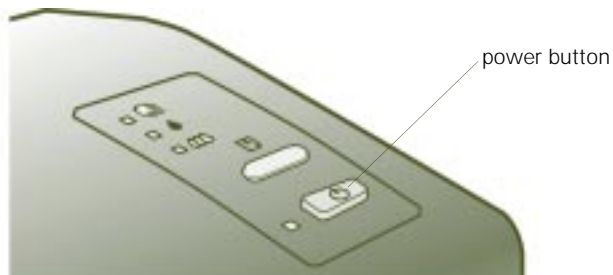


Caution:
Always use the  power button to turn the printer on or off. Never use the external switch on a power strip.

Don't use an outlet controlled by a wall switch or timer, or one that uses the same circuit as a large appliance. This may disrupt the power, which can erase memory or even damage the power supply.

Install the Ink Cartridges

1. Make sure the printer is turned off (the  power button should be up). Then plug the printer's power cord into a grounded outlet.





Caution:

To ensure the print heads charge correctly, install the ink cartridges that came with your printer.





You must remove the yellow tape from the top of the cartridge or you will permanently damage it. It's okay if a small corner of the yellow tape stays on the cartridge.

2. Remove the ink cartridges from their foil packages. Then remove **only** the yellow part of the tape seal on the top of each one. **Don't pull off the white portion or try to remove the clear seal underneath the cartridge.**

Remove the yellow tape seal

Don't remove the white portion

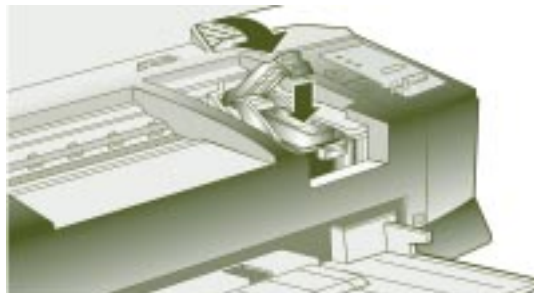
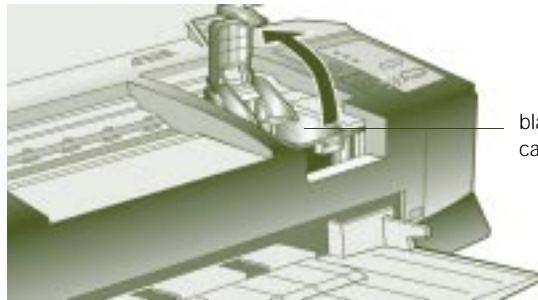


3. Press the  power button to turn on the printer. The  power light flashes and the  and  ink out lights come on. The black ink cartridge holder moves into loading position.
4. Open the printer cover and lift up the black ink cartridge clamp.
5. Place the black ink cartridge in the holder as shown. Then close the clamp, making sure it clicks into place.




Warning:


If ink gets on your hands, wash them thoroughly with soap and water. If ink gets in your eyes, flush them immediately with water.





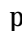


Caution:

If the ink cartridge holder moves back to the right before you install the cartridge, don't try moving it back by hand. Press the  black cleaning button and hold it down for 3 seconds to move the holder back into position.

Never turn off the printer when the  power light is flashing, unless the printer hasn't moved or made any noise for more than 10 minutes.

6. Now press the  color cleaning button to move the color ink cartridge holder into loading position.
7. Repeat steps 4 and 5 to install the color ink cartridge. Then press the  load/eject button to begin charging the ink delivery system.

The printer moves the print heads and begins charging the ink delivery system. The  power light flashes, and the printer makes various sounds.

Charging takes up to 4 minutes. Don't turn off the printer or interrupt this important process or you'll use up more ink than necessary.

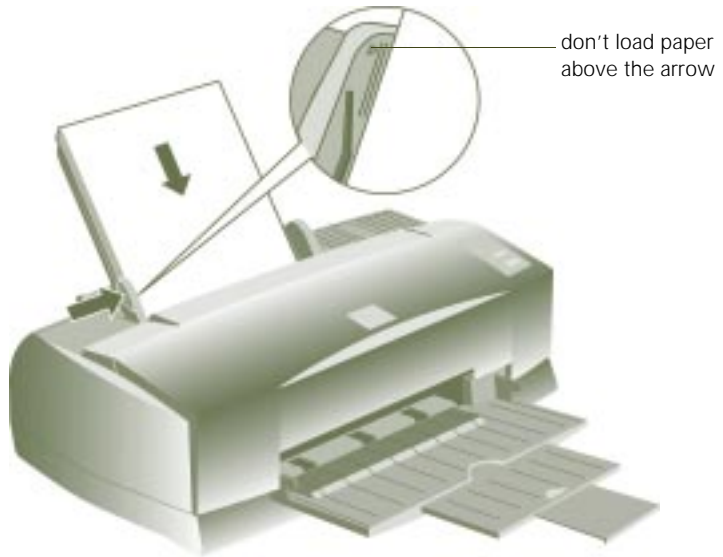
When it's finished, you can close the printer cover.

Load Paper

1. Open the output tray extensions and slide the left edge guide all the way to the left.



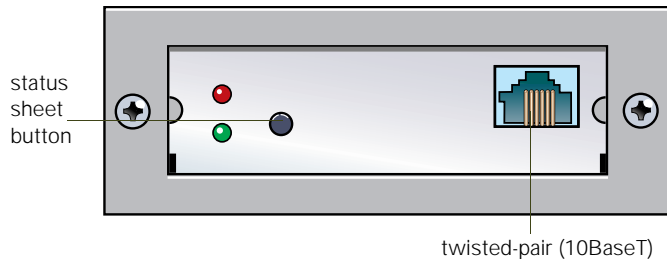
2. Load a stack of plain paper with the printable side up and place it against the right edge guide. Then slide the left edge guide to the paper's left edge, making sure the stack is not higher than the arrow mark on the guide.



Connect the Printer to Your Network

Connect your printer to an Ethernet twisted-pair (10BaseT) network connection.

1. Attach the network cable to the connector on the card.



2. To initialize the card, turn on the printer while pressing down the status sheet button. Continue pressing the status sheet button for five seconds.

Printing a Status Sheet:

To print a status sheet, press the status sheet button and hold it for about three seconds. This sheet gives you important information, including the serial number and MAC address of the card. Keep the status sheet so you can use it when you configure the Ethernet card.

2 Install the Network Software

To configure the Ethernet card, you only need to install the network software (EPSON Net!2) on one workstation or on the server, depending on your network.

If you have a TCP/IP network, you need to install EPSON Status Monitor 2 on all your Windows 98 and Windows 95 workstations to use the EPSON TCP/IP Printing protocol.

Log in as an Administrator (NT) or Supervisor (NetWare). Before you start, turn off all other active applications, including virus protection.



Note:

If you need to create diskettes to install the software, see Appendix A in your *Administrator's Guide*, then use this *Setup Guide* for configuration instructions.

For TCP/IP networks, if you want to use the arp command to set the card's IP address instead of installing EPSON Net!2, see page 28.

Installing EPSON Net!2

If you have the following network configurations and operating systems, you should install EPSON Net!2 to configure the card:

- ▶ Windows 98, Windows 95, or Windows NT 4.0 with Novell NetWare or TCP/IP
- ▶ Macintosh with AppleTalk


Installing EPSON Net!2 in Windows

1. Insert the EPSON Stylus COLOR 850Ne CD-ROM in your drive.

You see the EPSON Installation Program screen:



If the screen does not appear, go to My Computer and double-click the Epson CD-ROM icon to start the EPSON Installation program.

2. Highlight Install EpsonNet! for Windows and click the right arrow button .
3. Follow the instructions on the screen to install EPSON Net!2.



Note:

If you have any Windows 98 or Windows 95 systems on your TCP/IP network, you need to install Status Monitor 2 on each one to use EPSON TCP/IP Printing. Windows 98 and Windows 95 do not have TCP/IP printing built-in like Window NT.

When you are finished, you can install Status Monitor 2 to monitor status information about your printer including ink level information and printer errors. See page 13.

Status Monitor 2 can create extra network traffic, so if you don't want to install Status Monitor 2, you can just configure the Ethernet card with EPSON Net!2, described on page 16.

Installing EPSON Net!2 on a Macintosh

1. Create a folder for EPSON Net!2 on your hard disk.
2. Insert the EPSON Stylus COLOR 850Ne CD-ROM in your drive.
3. Copy EPSON Net!2 to the folder you created.

After you install EPSON Net!2, use it to configure your printer for AppleTalk, following the steps on page 32.

Installing Status Monitor 2

EPSON Status Monitor 2 is a single utility that you install in two parts. These two parts work together to allow you to see your printer's specific status information over the network.

Status Monitor 2 lets you monitor information from the server or from any of the workstations where you install it. It gives you ink levels in the printer and notifies you if the printer has any problems. It does create network traffic, however, so you may want to limit the number of users who monitor the printer.

Status Monitor 2 also includes EPSON TCP/IP Printing, which allows Windows 98 and Windows 95 users to print with TCP/IP. If you have Windows 98 or Windows 95 systems and use TCP/IP for printing, you need to install Status Monitor 2 on each workstation that uses the printer.

Write down your settings in the spaces provided; you need to use the same settings when you install each part of Status Monitor 2.



Note:

You may not see screens for all the steps here, depending on your computer's configuration.

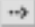
Write down your settings in the spaces provided as you install the first part of Status Monitor 2. You need to select the same settings for the second part.

Follow these steps to install EPSON Status Monitor 2:

1. Insert the EPSON Stylus COLOR 850Ne CD-ROM. You see the following screen:



If the screen does not appear, type D:\EPSETUP (where D: is the drive letter of your CD-ROM) and click OK to start the EPSON Installation program.

2. Highlight **Install Status Monitor 2 for Network** and click the right arrow button .
3. Close any open programs and click **Next**. A screen appears asking where you want to install Status Monitor 2.
4. Click **Next** to accept the default directory or choose a different directory and click **Next**.
5. If you are using Windows 98 or Windows 95 and you have TCP/IP installed, you see a screen asking you if you want to enable EPSON TCP/IP printing. Select **Yes** if you want to print with TCP/IP, and then click **Next**.

TCP/IP Printing: Yes_____ No_____



Caution:

If you have dial-up routers in a NetWare environment, they may automatically dial up the next hop and you may be charged for the line connection depending on the number of hops you set. To prevent this and to keep network traffic to a minimum, set hops carefully.



Note:

If you are not using EPSON Net!2 on your computer, you do not have to turn off background monitoring.

(You should limit the number of systems that monitor the printer, however, to prevent network traffic problems.)

6. Select the type of printer(s) you want to monitor and click Next.

Monitor: EPSON TCP/IP printers_____ Windows shared printers _____ NetWare printers_____ local printers_____

7. Select Monitor to monitor EPSON network printers that do not have drivers on your computer. Select Do not monitor if network traffic is a problem. Then click Next.


Printers: Monitor_____ Do not monitor_____

8. If you're using NetWare, set the number of hops (0 to 15) and click Next.

Number of hops:_____

9. Check the current settings and click Next. Select No and click Finish.

Now you install the second part of Status Monitor 2:

10. From the EPSON Installation Program screen, highlight Install Status Monitor 2 for EPSON Stylus COLOR 850Ne and click the right arrow button .

11. Click Next, then follow steps 5 through 8, using the same settings you used in those steps.

12. Check the current settings and click Next. Select Yes and click Finish to restart your computer.

13. After you restart your computer, right-click the green background monitoring icon in your Startup group on the taskbar. Click stop monitoring now. This step turns off background monitoring, which may interfere with EPSON Net!2 when you configure the card. (See page 4-7 in your *User's Guide* or page 3-8 in your *Administrator's Guide* to turn on background monitoring later.)

After you install the network software, configure the printer's Ethernet card for TCP/IP (page 28), or use EPSON Net!2 to configure your printer for NetWare (page 16).

3 Configure the Printer

Configuring for NetWare

You can configure the printer for NDS or bindery with NwAdmin and EPSON Net!2. (If you want to use PCONSOLE, see Chapter 4 in your *Administrator's Guide*.) Before you follow the steps in the sections below, check whether you want to use the printer as a dedicated print server or as a remote printer. (See page 4-1 in your *Administrator's Guide* for details.)



Note:

When printing using bindery correspondence clients, make the object related to the print server right under the Bindery context in the directory tree.

Confirm the bindery context path from the server with the SET BINDERY CONTEXT command. See your NetWare documentation for more information.

When you print a text file using the NPRINT command or DOS redirection, misconversion or a gap in characters might occur depending on the client environment.

Using NwAdmin to Set Up Your Printer

You must first use NwAdmin to define your printer, define a print server, and set up a queue. If the client does not correspond to NDS, set up the printer, print server, and queue in the bindery context. (If you need to use PCONSOLE, see Chapter 4 in your *Administrator's Guide*.)

Follow these steps to set up your printer:

1. Log in to the NDS tree (or to the server with Bindery context) with admin or supervisor privileges.
2. Run the administrator tool (NwAdmin).

3. Create a printer:

Click the directory context icon (or Bindery context), and select Object, then Create, and then Printer. Type the printer name and click Create.



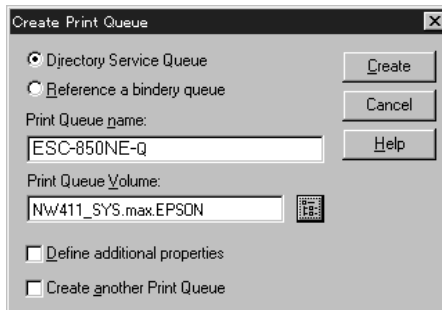
4. Create a print server:

Click the directory context icon (or Bindery context), and select Object, then Create, and then Print Server. Type the print server name and click Create.



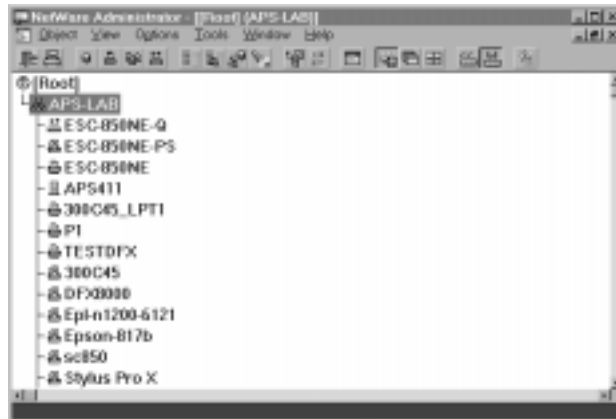
5. Create a print queue:

Click the directory context icon (or Bindery context), and select Object, then Create, and then Print Queue. Type the print queue name and select the print queue volume. Then click Create.

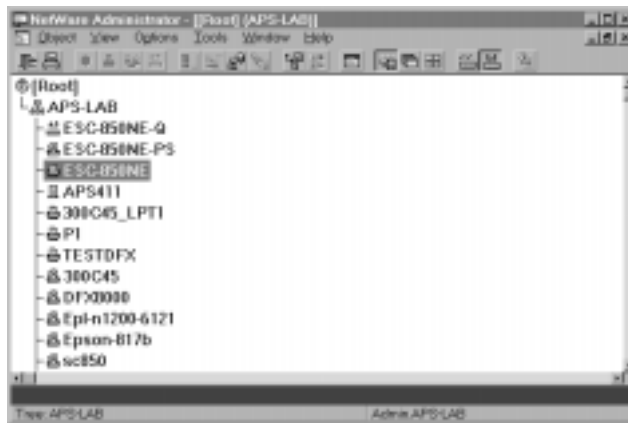


Setup Guide: Configure the Printer

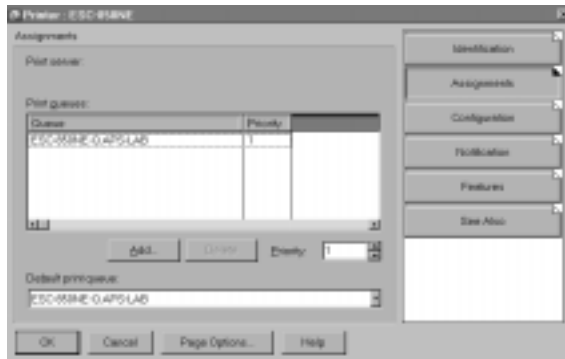
6. The objects you have just created are added to the NDS tree (or Bindery).



7. Double-click the Printer Object icon on the NetWare Administrator screen.

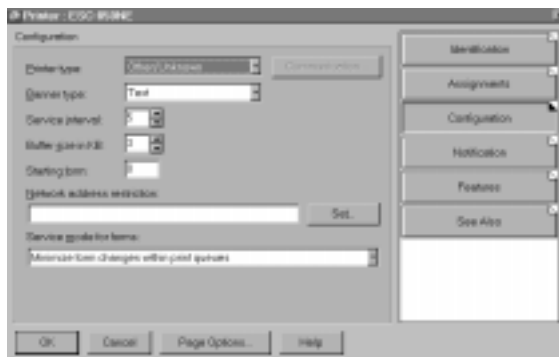


8. The Printer dialog box appears. Click Assignments and then click Add.

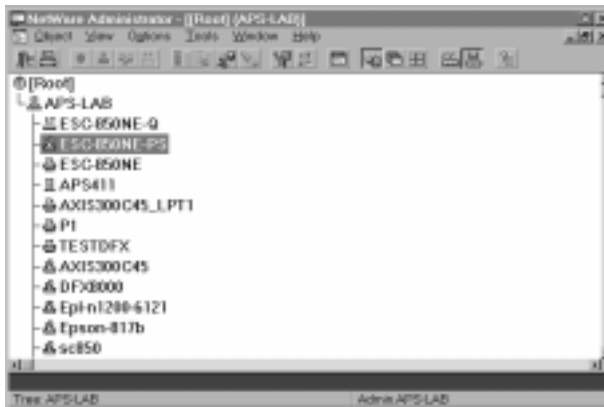


9. From the print queue list, select the queue you want to assign and click OK.
10. For Print Server mode, go to step 11.

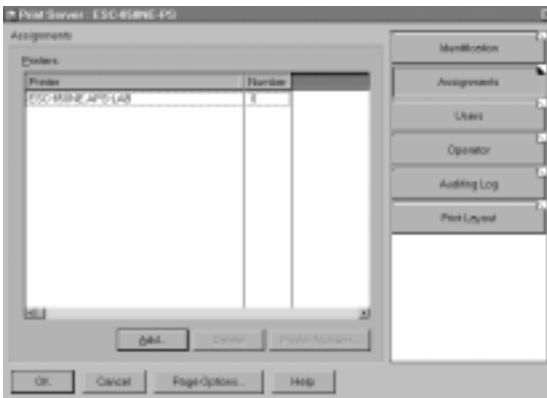
For Remote Printer mode, click Configuration, select Other/Unknown for the Printer type box and click OK.



11. Double-click the Print Server Object icon on the NetWare Administrator screen.



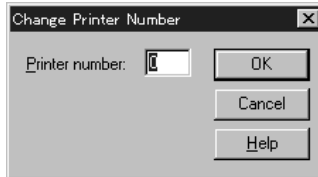
12. The Print Server dialog box appears. Click Assignments and then click Add.



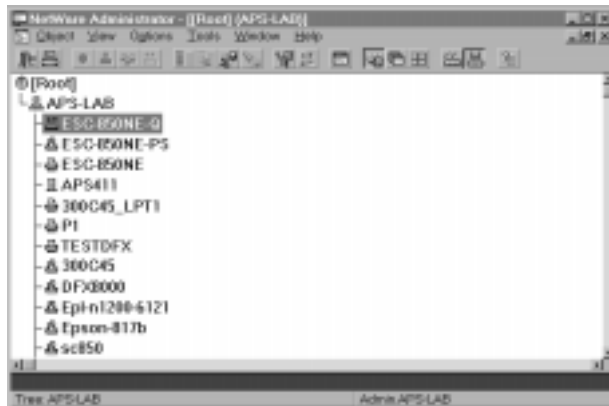
13. From the printer object list, select the printer object you want to assign and click OK.

14. For Print Server mode, go to step 15.

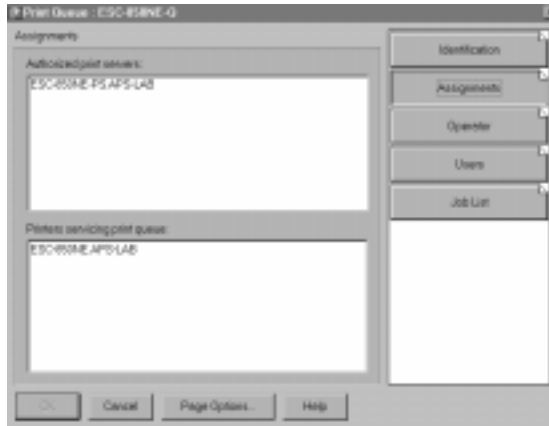
For Remote Printer mode, go back to the screen in step 12 and click the Printer Number button to set up the printer number from 0 to 254.



15. Double-click the Print Queue Object icon on the NetWare Administrator screen.



16. The Print Queue dialog box appears. Click Assignments. Check if the print server and the printer are assigned to the queue.



You now need to use EPSON Net!2 to configure the card:

- ▶ For Print Server mode, see the section below.
- ▶ For Remote Printer mode, go to page 25.

Using EPSON Net!2 to Configure the Card in Print Server Mode



Note:

If the Status Monitor 2 program is open, or if background monitoring is turned on, it may interfere with EPSON Net!2. Close Status Monitor 2 if it is running and turn off background monitoring, following step 13 on page 15.

If you have connected more than one printer with the same type of Ethernet card to the network, you can distinguish the cards by their MAC addresses. Press and hold the card's status sheet button for three seconds. See page 10 for details.

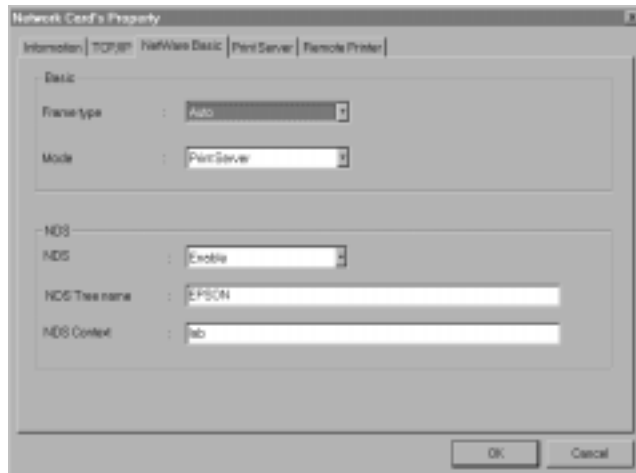
If the IP address is set to the default IP address, the printer model might not appear.

Follow these steps:

1. Start EPSON Net!2. The following screen appears:



2. Highlight your EPSON Stylus COLOR 850Ne printer and click Configuration.
3. Click the NetWare Basic tab and make the following settings.



Frame Type

You can select from one of the following: Auto, Ethernet 802.2, Ethernet 802.3, Ethernet II, or SNAP.

Mode

Select Print Server.

NDS

Select Enable or Disable.

NDS Tree Name

If you are using NDS mode, type the same name as you used in NwAdmin (up to 31 characters).

NDS Context

NDS context is the Object rank in the Directory tree. Type the container object (up to 255 characters) from the Object to the Root. Do not type the “.” at the top.



Note:
See your NetWare manual for the available characters and number of characters you can use.

4. Click the Print Server tab and make the following settings.

A screenshot of the 'Network Card Properties' dialog box, specifically the 'Print Server' tab. The dialog has several tabs at the top: 'Information', 'TCP/IP', 'NetWare Basic', 'Print Server', and 'Remote Printer'. The 'Print Server' tab is active. It contains the following fields:

- 'Primary file server name': A dropdown menu with 'AP0411' selected.
- 'Password': An empty text box.
- 'Reprint password': An empty text box.
- 'Print server name': A text box containing 'STYCRONE'.
- 'Polling interval': A text box containing '1' and 'sec'.

At the bottom right, there are 'OK' and 'Cancel' buttons.

Primary file server name

Select the server where you created the queue.

Password

Type any new password up to 19 characters. The characters you entered appear as “*”.



Caution:

Once you make changes to the Ethernet card, you must wait until it registers the settings before you turn off the printer.



Note:

If the Status Monitor 2 program is open, or if background monitoring is turned on, it may interfere with EPSON Net!2. Close Status Monitor 2 if it is running and turn off background monitoring, following step 13 on page 15.

If you have connected more than one printer with the same type of Ethernet card to the network, you can distinguish the cards by their MAC addresses. Press and hold the card's status sheet button for three seconds. See page 10 for details.

Print server name

Type any new name up to 47 characters. The default name is shown below.

(Printer name) - (last 6 digits of the serial number)

Polling interval

Set the polling time from 5 to 90 seconds.

5. Click OK to save your changes. If the message “Configuration successfully done” appears on your screen, the update is complete.
6. In the file Server Console’s MONITOR.NLM, select the Connection Information. Check if the print server name assigned to the Ethernet card has been logged in to the Active Connections list. It takes up to five minutes to complete this.

Using EPSON Net!2 to Configure the Card in Remote Printer Mode

Follow these steps:

1. From the System Console of the file server where you set the print queue, load the print server module with the following command (use the print server name which you assigned in step 4 under “Using NwAdmin to Set Up Your Printer,” on page 17):

>Load PSERVER print server name

Setup Guide: Configure the Printer



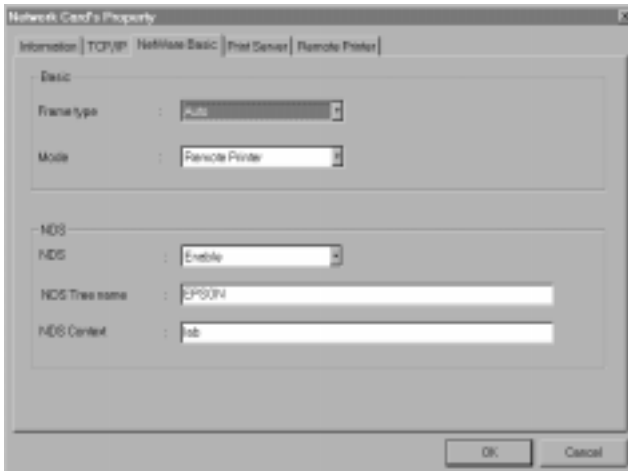
Note:

If the IP address is set to the default IP address, the printer model might not appear.

2. Start EPSON Net!2. The following screen appears:



3. Highlight your printer and click Configuration.
4. Click the NetWare Basic tab and make the following settings.



Frame type

Select one from the following: Auto, Ethernet 802.2, Ethernet 802.3, Ethernet II, Ethernet SNAP.

Mode

Select Remote Printer.



Note:

See your NetWare manual for the available characters and number of characters you can use.

NDS

Select Enable or Disable.

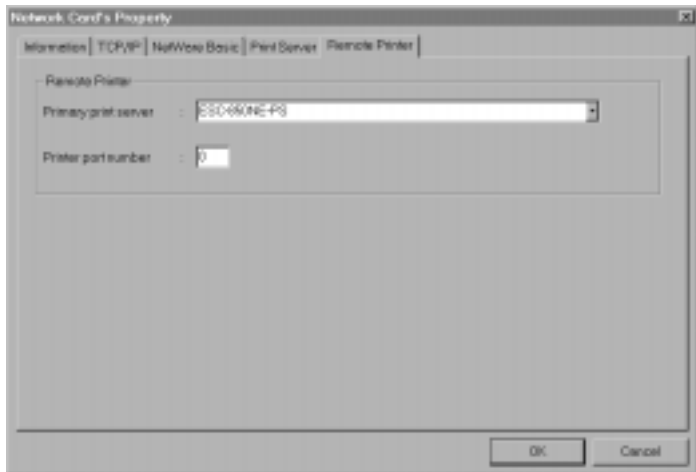
NDS Tree Name

If you are using NDS mode, type the same name (up to 31 characters) as you set in NwAdmin.

NDS Context

NDS context is the Object rank in the Directory tree. Type the container object (up to 255 characters) from the Object to the Root. Do not type the “.” at the top.

5. Click the Remote Printer tab and make the following settings.



Caution:

Once you make changes to the Ethernet card, you must wait until it registers the settings before you turn off the printer.

Primary print server name

Select the print server name you have created.

Printer port number

Type the same port number you assigned to the print server.

6. Click OK to save changes. If the message “Configuration is successfully done” appears on your screen, the update is complete.

7. Select Printer Status from the Console screen of the print server. Then check the status.
8. Select Queues serviced. Check if the print queue name which you set in step 5 on page 17 under “Using NwAdmin to Set Up Your Printer” exists in the Print Queues Serviced By Printer box.

Configuring for TCP/IP

For a Windows 98, Windows 95, or Windows NT network with TCP/IP, you need to set the card’s IP address. You can use EPSON Net!2 or the arp command to do this, as described in the sections below.



Note:

If the Status Monitor 2 program is open, or if background monitoring is turned on, it may interfere with EPSON Net!2. Close Status Monitor 2 if it is running and turn off background monitoring, following step 13 on page 15.

Windows 98 and Windows 95 do not come with the TCP/IP printing protocol, so in addition to TCP/IP, you need to install the EPSON TCP/IP Printing protocol included with Status Monitor 2. See page 11 for instructions.

Using EPSON Net!2

Make sure the Ethernet card and printer are on the same segment of the network as the computer you are using to configure the card. Also, you need to know the IP address for the computer and the IP address you will assign to the printer’s Ethernet card.

Follow these steps to assign an IP address:

1. Make sure Windows is running, the Ethernet card is connected to the network, and the printer is turned on.
2. Click Start, point to Programs, point to EPSON Net!2, then click EPSON Net!2.



Note:

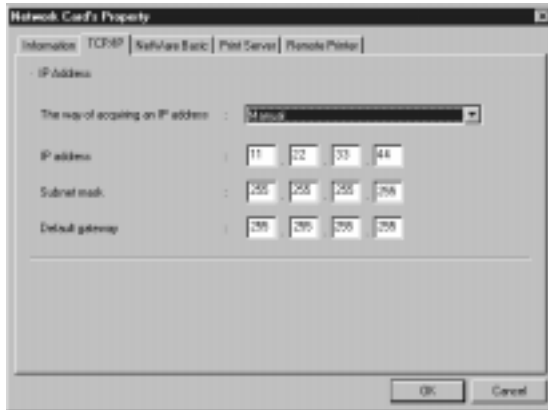
If you have connected more than one printer with the same type of Ethernet card to the network, you can distinguish the cards by their MAC addresses. Press and hold the card's status sheet button for three seconds. See page 10 for details.

3. Click the printer where you want to set the IP address, and then click the Configuration button.



click here

4. Click the TCP/IP tab to display the TCP/IP menu.



To use RARP, BOOTP, or DHCP, a server for each protocol is necessary. If there is no corresponding server, do not use any of these settings. See your network operating system documentation for the settings.

5. Under The way of acquiring an IP address, select one of the following: Manual, RARP, BOOTP, or DHCP.



If you will use the card's internal home page, assign an IP address manually.

The default IP address is 11.22.33.44. If you plan to use the card's internal home page, change the default IP address.

If a server or router acts as a gateway, type the gateway address. If there is no gateway, type the IP address of your computer.

6. Assign the IP address, the Subnet mask, and the Default gateway. If you use DHCP to acquire an IP address, you can't assign these items; they are assigned by the server.
7. Click OK to save the new settings. The update is complete when the message "Configuration is successfully done" appears. (After you click OK, wait a few minutes before turning off the printer, so the settings have time to reach the card.)

Before you can print using TCP/IP, you still need to do the following on each computer that will use the printer:

- ▶ Install the printer driver (see page 36)
- ▶ Add a printer port (see page 38)

Using the arp Command

Make sure the Ethernet card and printer are on the same segment of the network as the computer you are using to configure the card. Also, you need to know the IP address for the computer and the IP address you will assign to the printer's Ethernet card.

Follow these steps to assign the IP address:

1. Click Start, point to Settings, click Control Panel and double-click the Network icon.
2. In Windows 98 or Windows 95, highlight TCP/IP and click Properties, then click the Gateway tab.

In Windows NT, click the Protocols tab. Highlight TCP/IP Protocol and click Properties. Click the IP Address tab.

3. Type 11.22.33.44 in the Gateway box to set up a default gateway. In Windows 98 or Windows 95, click Add.

4. Click OK to close the TCP/IP dialog box and then click OK to close the network settings dialog box and save your settings. Click Yes to restart your computer.
5. Find the MAC address (hardware address) for the Ethernet card on the status sheet (see page 10).
6. Click Start, point to Programs, then click the MS-DOS Prompt icon to open a DOS window.

7. Type in the following command to set up the routing table:

```
ping 11.22.33.44
```

8. Add an entry in the ARP table that assigns an IP address to the hardware address of the Ethernet card. Use the following command:

```
arp -s <IP address> <MAC address>
```

for example:

```
arp -s 192.1.1.6 00-00-48-92-BD-9A
```

9. Wait at least two minutes for the settings to reach the card, then start a continuous “ping” to the card, using the following command with the card IP address:

```
ping <IP address>
```

for example: `ping 192.1.1.6`

You see a message similar to the following:

```
Reply from 192.1.1.6: bytes=32 time<10ms TTL=30
Reply from 192.1.1.6: bytes=32 time<10ms TTL=30
Reply from 192.1.1.6: bytes=32 time<10ms TTL=30
Reply from 192.1.1.6: bytes=32 time<10ms TTL=30
```

This shows that the Ethernet card is correctly set up for TCP/IP.

If you receive 4 lines that say “Request Timed Out,” the card is not set up correctly. Check to make sure the card is on the same segment of the network as the workstation you are using to configure it and that you typed in the correct IP and MAC addresses.



Note:

For Windows NT, substitute colons (:) for the hyphens (-) shown in the MAC address.



Note:

If you have trouble getting the network to see the card, check Chapter 7, Troubleshooting, in the *Administrator's Guide* for solutions to possible problems.

Before you can print using TCP/IP, you still need to do the following on each computer that will use the printer:

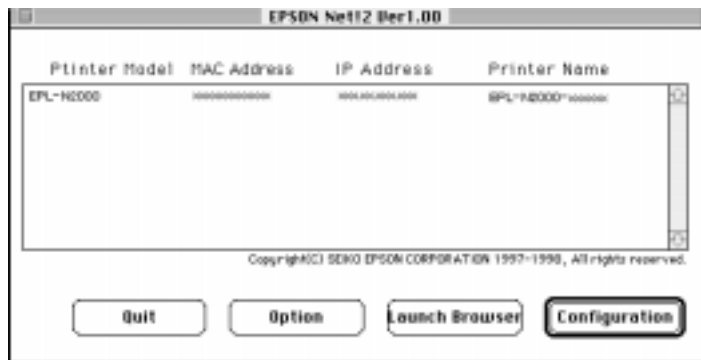
- ▶ Install the printer driver (see page 36)
- ▶ Add a printer port (see page 38)

Configuring for AppleTalk

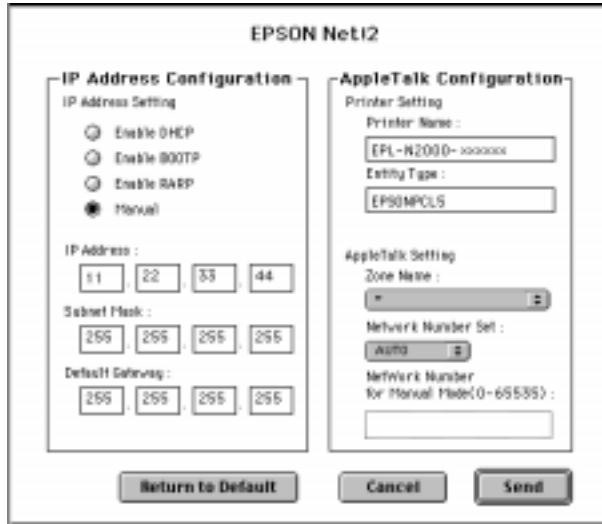
To use your printer on an AppleTalk network, you need to configure the Ethernet card for AppleTalk. Follow these steps to configure your card using EPSON Net!2:

1. Open the EPSON Net!2 utility.

You see a window like the following:



2. Highlight the EPSON Stylus COLOR 850 printer and click Configuration. The IP Address Configuration and AppleTalk Configuration dialog box appears.



3. Make the following settings in the AppleTalk Configuration box.

Printer Name

Type the printer name (up to 31 characters). The default name is shown:
(Printer name)-(last 6 digits of the serial number)

Entity Type

You do not have to set this option.

Zone Name

Select the network zone in which you want the printer to appear. If the zone has not been set, “*” appears.

Network Number Set

Select the network number setting. In most cases, you should select Auto.

Network Number for Manual Mode

The default number is 65535. If you have selected Auto for the Network Number Set, you can't type the network number manually.

4. Click the Send button to save the new settings to the Ethernet card. If the message "Configuration is successfully done" appears, the update is complete.

Configuring for NetBEUI

You can use NetBEUI in Windows 98, Windows 95, and Windows NT 4.0 networks to print to your EPSON Stylus COLOR 850Ne. You configure the card for NetBEUI using the card's internal home page.

Before you can configure the card for NetBEUI, you must:

- Set up TCP/IP on all the workstations that will use the printer.
- Set the IP address for your Ethernet card. (See page 28.)
- Make sure you have either Microsoft Internet Explorer 4.0 or later, or Netscape Navigator 3.0 or later.



Note:

EPSON Net!2 for Windows and the Ethernet card home page can't be open at the same time.

If you have not assigned an IP address to the Ethernet card, or if you use the default setting (including when you select DHCP to acquire an IP address), you can't configure the Ethernet card for NetBEUI using the Ethernet card home page.

Then, follow these steps to access the Ethernet card home page and configure the card:

1. Run EPSON Net!2. Click the printer you want to configure from the list, and click the Launch Browser button. EPSON Net!2 closes automatically.

Or, run the browser and type the IP address for the Ethernet card. Do not run EPSON Net!2 while the browser is running.

Type the following URL:

[http:// \(IP address of the Ethernet card\) /](http://(IP address of the Ethernet card) /)

The home page appears.

2. Click NetBEUI under Network on the Configuration menu. The NetBEUI setting screen appears.



Note:

If Disable is on, all NetBEUI related functions stop.

The NetBIOS name is the name of your computer on the network. Make sure to give the printer a unique name for the network.

For the workgroup name, type the domain name or the workgroup name used in the Windows network.

3. Select Enable in order to use NetBEUI.
4. Type the NetBIOS name (up to 15 characters), the workgroup name (up to 15 characters), and the device name (up to 8 characters). There are some restrictions on the characters you can use. For details, see your browser or OS documentation.
5. Click SUBMIT to update the settings. If you have set a password, type the password to update the settings when prompted.
6. If the message “Configuration change is complete!” appears on your screen, the update is complete. Enable the changes by pressing RESET or turning your printer off and on.



4 Set Up the Workstations



Note:

If you are using only Windows 98 and/or Windows 95 on a TCP/IP network, you must install EPSON Status Monitor 2 on each workstation.

If you don't have a CD-ROM drive, you can create diskettes from the CD-ROM using another computer. Run the Make Diskettes program on the CD. For details, see page A-1 of the *Administrator's Guide*.

For most workstations, you need to install the printer driver before you can print.

If you like, you can install Status Monitor 2 on Windows 98, Windows 95, and Windows NT 4.0 workstations to monitor the ink levels and keep track of other information about your printer. Status Monitor 2 does create traffic, so you might want to limit the number of users who monitor the printer. To install Status Monitor 2, see the instructions on page 13.

For Windows computers, you need to change the port settings and for Macintosh computers, you need to select the printer in the Chooser.

Install the Printer Driver


Your printer driver is on the EPSON Stylus COLOR 850Ne CD-ROM that came with your printer. If you have a Windows NT Server 4.0 network, you don't need to install the driver on each workstation. See your Windows NT documentation to set up sharing.

Installing in Windows 98, Windows 95, or Windows NT 4.0

1. Insert the EPSON Stylus COLOR 850Ne CD-ROM. You see the EPSON Installation Program screen:



If you do not see the screen, click Start, then click Run and type D:\EPSETUP (where D: is the drive letter of your CD-ROM) and click OK.

2. Highlight Install Printer Driver and click the right arrow button .
3. Click OK to install the printer driver.

Your printer is automatically set to your local port, LPT1. You need to change it to follow the network path to your printer by adding a port. See the section on the next page.

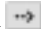
Changing Your Port Setting

In Windows NT 4.0, make sure the TCP/IP Print Server service is running before you start. Then follow these steps to change to the correct port:

1. Point to Start, Settings, and click Printers.
2. Highlight the EPSON Stylus COLOR 850 printer and right-click the icon.
3. Select Properties.
4. In Windows 98 or Windows 95, click the Details tab.
In Windows NT 4.0, click the Ports tab.
5. Click Add Port.
6. In Windows 98 or Windows 95, click Browse and choose the server or EPSON_TCPIP_Printer that your printer is set up on. Then click OK.

In Windows NT 4.0, click LPR Port, then type in the printer's IP address and the name you want to assign. Click OK, Close, and OK again.

Installing in Windows 3.1x

1. Make sure Windows Program Manager is running and exit any open application programs.
2. Insert the EPSON Stylus COLOR 850Ne CD-ROM.
3. Open the File menu and select Run.
4. Type D:\EPSETUP (where D: is the drive letter of your CD-ROM) and click OK. You see the Software Installation screen (shown on page 12).
5. Highlight Install Printer Driver and click the right arrow button .

6. Click OK to install the software.

Your printer is automatically set to your local port, LPT1. You need to change it to follow the network path to your printer. See the section below.

Changing Your Port Setting

Follow these steps to change to the correct port under Windows 3.1x:

1. Open the Print Manager and select EPSON Stylus COLOR 850 from the list of printers.
2. Select Network Connections from the Options menu.
3. In the New Connection area, type the network path and port, or click Browse to find the network path to your printer.
4. Click Connect and then click Close.

Installing on a Macintosh

1. Turn on your printer and your Macintosh and turn off any virus protection programs you may have.
2. Insert the EPSON Stylus COLOR 850Ne CD-ROM.
3. Double-click the Installer icon.
4. Follow the instructions on the screen and restart your computer.

To use the printer or configure the printer's Ethernet card, you need to select the EPSON Stylus COLOR 850 AT printer in the Chooser and make sure AppleTalk is turned on. See your Macintosh documentation for more information.

5 Print a Test Page

Follow the steps on a Windows 98, Windows 95, or Windows NT workstation to test the printer and make sure that the network is working correctly. Make sure the printer is turned on and a sheet of letter-sized paper is loaded, then follow these steps to print a test page:

1. Point to Start, Settings, and click Printers.
2. Right-click the EPSON Stylus COLOR 850 icon and click Properties.

You see the printer driver screen.



Note:

If the test page does not print, see Chapter 6 in your *User's Guide* and Chapter 7 in your *Administrator's Guide* for possible problems and solutions.

3. Click the General tab and click Print Test Page. The test page prints and a screen asks you to confirm that it printed correctly.