

EPSON® Stylus® Color 880/880i and 980

ATTENTION: Printer Software Update





■ Installing your printer software on Windows® Millennium Edition (Me)

If you're connecting your printer to a computer running Microsoft® Windows Me, follow the steps below to install your printer software. Don't follow the standard Windows software installation instructions on the *Start Here* sheet.

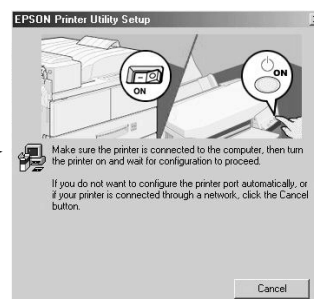
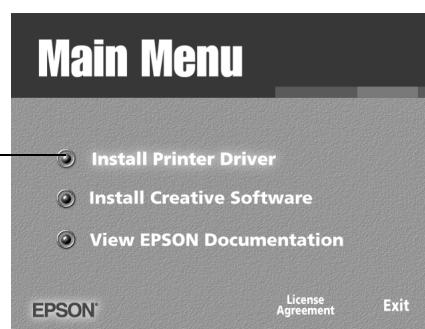
■ Completing Windows 95, 98, and Me software installation

When you install your printer software on a computer running Windows 95, 98, or Me, you may need to release the installation program if it stops responding, and then download and install a new EPSON printer driver from the web. Follow the steps in "Completing Printer Software Installation" on the back of this sheet.

Installing Your Printer Software With Windows Me

1. Use the instructions on the *Start Here* sheet to unpack your printer, put on the paper support, install ink cartridges, load paper, and connect the printer to your computer. Then return here for instructions on installing your printer software.
2. Don't turn on your printer (the  power light should be OFF). It's important to leave your printer turned OFF and wait for the installation program to tell you when to turn it on.
3. Turn on your computer.
4. Insert your printer software CD-ROM in a CD-ROM or DVD drive.
5. Double-click the  My Computer icon on your desktop, then double-click the  EPSON CD-ROM icon.
6. Double-click the  EPSON icon to start the installer. Read the license agreement and click **Agree**. You see the Main Menu.
7. Click **Install Printer Driver**. You see the printer driver installation screen. Click **OK**. The installer copies files to your computer.
8. If the installation software stops responding, follow the steps in "Completing Printer Software Installation" on the back of this sheet to continue.
9. When you see this screen, turn ON your printer. The screen disappears and installation continues. When installation is finished, click **OK**.
10. Follow the on-screen instructions to register your printer with EPSON.
11. Restart your computer. Then return to the back of the *Start Here* sheet to install your creative software and EPSON documentation.

Click here



Completing Printer Software Installation

While you're installing your printer software, you'll see this window:

If this window remains on your screen for a few minutes, your installation program may have stopped responding.

To release the installation program, follow these steps:

1. On your keyboard, hold down the **Ctrl** and **Alt** keys, then press the **Delete** key. You see a window like this:
2. Click the **E_srcv03** program to highlight it (you may need to scroll down).
3. Click the **End Task** button to close the program. (If you see a screen confirming the end of the task, click **End Task** again.)
4. Restart your system.
5. Your printer should now be able to print, but for the best operation, we recommend that you download and install a new EPSON printer driver from the EPSON web site. Go to support.epson.com, select your printer model, and click the **Downloads** tab. Then select the **printer driver** for your version of Windows and install it as instructed.

