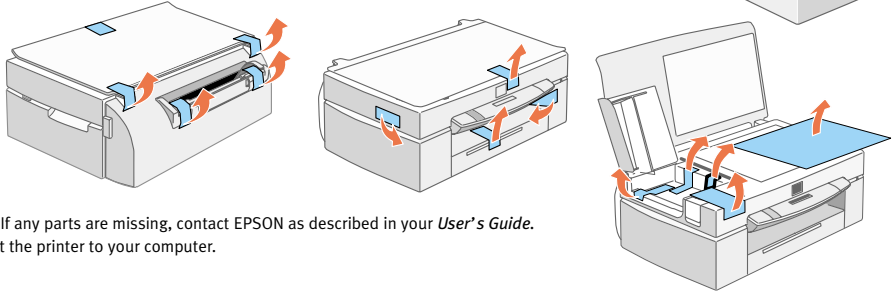


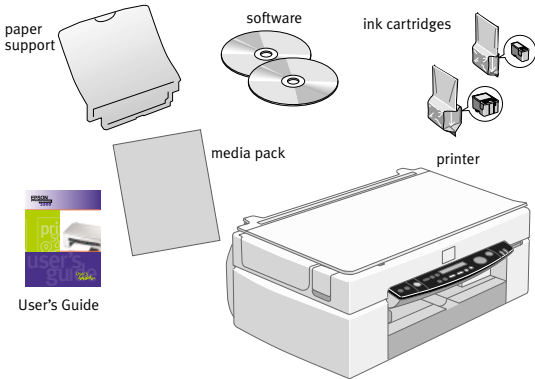
1

Unpack your EPSON Stylus Scan

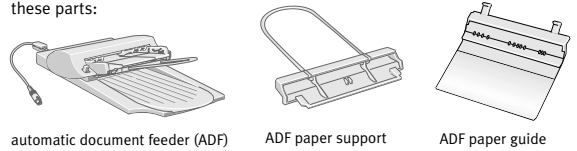
Remove any tape and packing materials.



Make sure you have all the parts. If any parts are missing, contact EPSON as described in your *User's Guide*. You'll also need a cable to connect the printer to your computer.



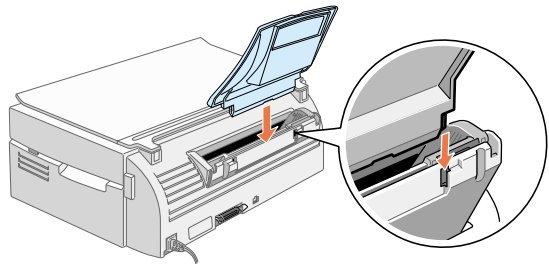
If you have the EPSON Stylus Scan 2500 Pro model, you should also have these parts:



unfold here

2

Attach the paper support



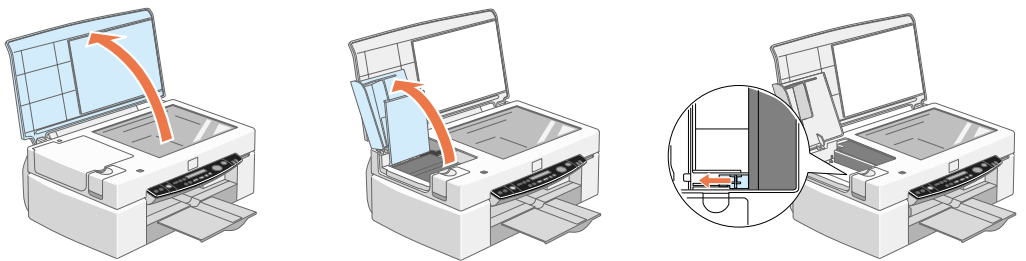
3

Release the transportation lock

1. Open the document cover.

2. Open the maintenance cover.

3. Slide the transportation lock out to release the scanner carriage.

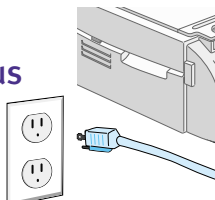


CAUTION

To avoid damaging the EPSON Stylus Scan, be sure to lock the transportation lock before you move it.

4

Plug in your EPSON Stylus Scan




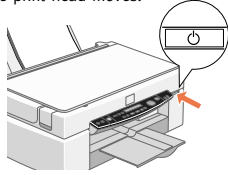
CAUTION

Make sure you check the system and location requirements and follow all the safety instructions in your *User's Guide*. Plug the printer into a properly grounded outlet. If you need help in setting up your printer, see "Solving Problems" in your *User's Guide*.

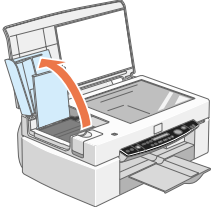
5

Install the ink cartridges

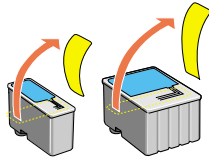
1. Press the  Operate button. The Operate light comes on and the print head moves.



2. Open the document and maintenance covers, if necessary.

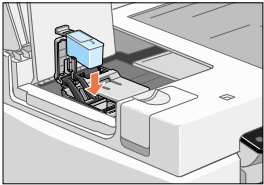


3. Unwrap the ink cartridges. Then pull off only the yellow part of the tape seal on top. *Don't pull off the blue portion or remove the clear seal on the bottom of the cartridge.*

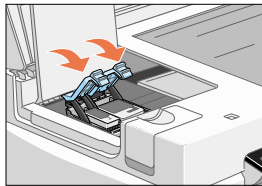


WARNING If ink gets on your hands, wash them thoroughly with soap and water. If ink gets in your eyes, flush them immediately with water. Keep ink cartridges out of the reach of children.

4. Lift up the ink cartridge clamps.

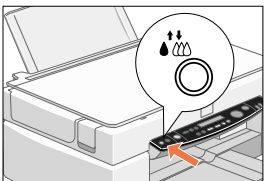



5. Insert the ink cartridges with the labels face-up. Don't press down on the cartridges.





6. Press down on the ink cartridge clamps until they lock into place.

7. Close the maintenance and document covers.



8. Press the  cleaning button to begin charging the ink delivery system.

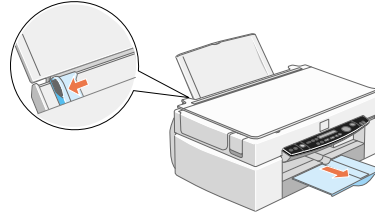
Charging takes about 2 minutes. The  Operate light flashes and the printer makes various sounds. Don't turn off the printer yet. Wait until the  Operate light stops flashing and stays on.

CAUTION Don't open the clamps to remove a cartridge except to replace it with a new one. Once you remove a cartridge, you can't reuse it, even if it contains ink. You must install both cartridges and leave them installed for all types of printing. To avoid damaging the printer, never move the print head by hand.

6

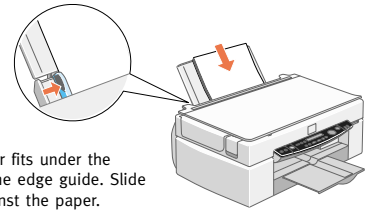
Load paper in the tray

1. Slide out the edge guide.



2. Slide out the tray extension.

3. Place a stack of paper against the right side of the feeder.



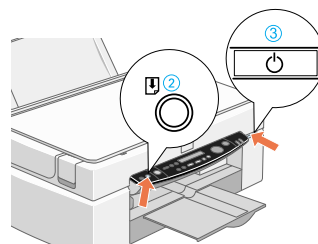
4. Make sure the paper fits under the arrow mark inside the edge guide. Slide the edge guide against the paper.


7

Test your EPSON Stylus Scan

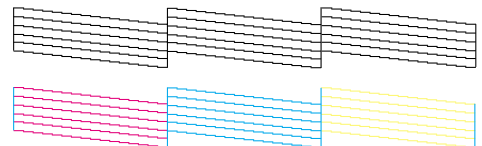
1. Turn off the printer.

2. Hold down the  load/eject button.



3. Press the  Operate button.

When you release the buttons, the nozzle check page starts to print. This is what it should look like:



If it doesn't look right, you may need to run a print head cleaning cycle. See your *User's Guide* for instructions. If it doesn't print, see "Solving Problems" in your *User's Guide*.

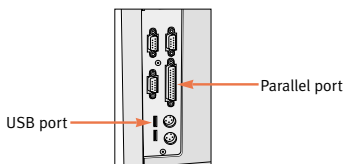
turn over 

8

Connect the EPSON Stylus Scan to your computer and install the software

You'll follow different instructions, depending on what type of system you have:

- Windows® 98 with USB connection
- Windows 95 or 98 with parallel connection
- Macintosh® with USB connection




Before you start, make sure you have the two CD-ROMs that came in the box with your EPSON Stylus Scan. If you don't have a CD-ROM drive, contact EPSON as described in your *User's Guide*.

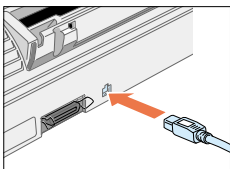
Windows 98 with USB: Making the connection

First you'll connect the EPSON Stylus Scan to your computer, then you'll install the software.

To connect the printer, you'll need a shielded USB "AB" interface cable, not more than 6.5 feet long.

Connecting Your EPSON Stylus Scan

1. Make sure your computer is turned on.
2. Turn on the printer by pressing the  Operate button.



3. Connect the square end of the USB cable to your printer's USB port.
4. Connect the flat end of the USB cable to your computer's USB port or USB hub port. Windows detects your printer.

5. Follow the instructions in the next section to install your software.

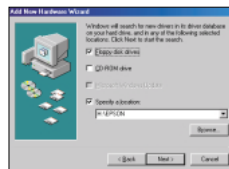
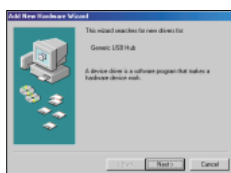
CAUTION If you're using a USB hub, connect the printer to a first tier hub, which is the hub closest to the host computer. If the printer doesn't work with the hub, connect it directly to a USB port on your computer.

Installing Your Driver Software

NOTE Make sure you have your Microsoft® Windows 98 CD-ROM available. If you don't have this CD-ROM, make sure you know where to find the Windows 98 source files on your hard disk (for example, in the Win 98 folder.) If you need help, contact your computer manufacturer.

Your computer will install several USB devices. **Don't click Cancel at any time during the installation process.**

1. Click **Next**, then continue clicking **Next** on each window that appears.
2. If you see a message asking for your Windows 98 CD-ROM, insert it and click **OK** (or select **Specify a location**, click **Browse**, and locate the Windows 98 source files on your hard disk drive.)
3. When you see the message that Windows has finished installing, click **Finish**. Windows detects a USB printer.
4. Remove the Windows 98 CD-ROM (if necessary) and insert the EPSON Stylus Scan 2500 software CD-ROM.
5. Repeat step 1. When you see the window shown in the next step, select **Specify a location**, click **Browse**, and locate the **Epson** folder on your EPSON Stylus Scan 2500 software CD-ROM.



6. Click **Next**, then follow the instructions on the screen to complete the installation. You may need to switch between the EPSON Stylus Scan 2500 software CD-ROM and your Windows 98 CD-ROM several times.
7. When you see the EPSON Screen Calibration utility, move the slider right or left until the stripes match as closely as possible. Then click **OK**.

8. Click **Finish**. Windows detects the scanner portion of your EPSON Stylus Scan 2500.

Finishing the Software Installation

1. Click **Next**, then continue clicking **Next** on each window that appears.
2. Make sure the EPSON Stylus Scan 2500 software CD-ROM is in your drive. If you need to specify a location, click **Browse**, and locate the **Epson** folder on your EPSON Stylus Scan 2500 software CD-ROM. Then click **Next** and follow the instructions on the screen.
3. When you see a message that setup is complete, click **OK**, then click **Finish**.
4. Double-click **My Computer** on your desktop.
5. Double-click the **Epson_ss2500** CD-ROM icon. Then double-click **Cdsetup**.

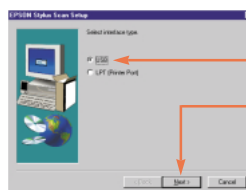


6. Click the **Add Software** button.



7. **Make sure all items are checked.** Then click **OK**.

8. Follow the on-screen instructions to install the EPSON Smart Panel™. When the installation is complete, you see the EPSON Stylus Scan Setup window. Click **Next**.



9. Select **USB**, then click **Next**. Continue with the instructions in the next section.

Installing Adobe® PhotoDeluxe® and Additional Software

1. Follow the on-screen instructions to install Acrobat® Reader and WinFax®. After each installation is complete, the next one begins automatically. **Don't restart your computer until all the programs have been installed.** You may need to switch between the EPSON Stylus Scan 2500 software CD-ROM and your Microsoft Windows 98 CD-ROM again.
 2. If you see a message requesting a disk labeled "DLL Installations," click **OK**, click **Browse**, click **OK**, then click **OK** again. (You may have to highlight the folder whose name begins with **mse** in the Browse box.)
 3. After WinFax has installed, click **Finish** to restart your computer. Follow the instructions on the screen to configure and register WinFax.
 4. Insert your Adobe PhotoDeluxe CD-ROM. Follow the instructions to accept the license agreement and install PhotoDeluxe.
 5. When you see another message asking to restart your computer, click **OK**. For eFax installation instructions, see your *User's Guide*.
- Now you're ready to print, scan, and copy. See your *User's Guide* for instructions.

Windows 95 or 98 with parallel: Making the connection

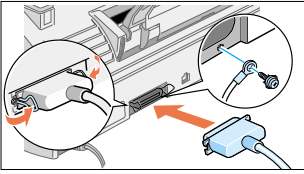
First, you'll connect the EPSON Stylus Scan to your computer, then you'll install the software.

To connect the printer, you'll need a high-speed, bidirectional, IEEE-1284 parallel cable, not more than 6 feet long.

If you have a USB port (Windows 98 only), we recommend using it rather than the parallel port. See the previous section for instructions.

Connecting Your EPSON Stylus Scan

1. Make sure both the printer and computer are turned off.



2. Plug the parallel cable into the printer's parallel connector, then fasten it with the wire clips.

If there is a ground wire at the end of the cable, connect it to the ground connector at the back of the EPSON Stylus Scan.

3. Plug the other end of the cable into your computer's parallel port.

CAUTION Connect the EPSON Stylus Scan directly to the parallel port on your computer. Do not use a pass-through port on a Zip™ drive or any other accessory. Do not use the same parallel port as you use for your Zip drive. If your computer has more than one parallel port, connect the printer to the built-in port (LPT1). For the fastest scanning and printing, enable your computer's ECP/DMA mode, if possible. See your computer documentation for instructions.

Installing Your Driver Software

1. Turn on your EPSON Stylus Scan and your computer. Wait until you see the Windows desktop icons.

IMPORTANT: If at any time you see a message that Windows has detected your printer and asking you to install a driver, **ALWAYS** select **Cancel**. You can't install your printer software that way.

2. Insert the EPSON Stylus Scan 2500 software CD-ROM.
3. Double-click **My Computer** on your screen.
4. Double-click the **Epson_ss2500** CD-ROM icon. Then double-click **Cdsetup**.



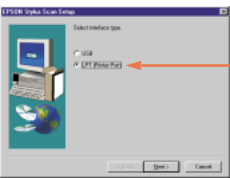
5. Click the **Add Software** button.



6. Make sure all items are checked. Then click **OK**.

7. Follow the on-screen instructions to install the EPSON Smart Panel. When installation is complete, you see the EPSON Stylus Scan Setup window.
8. Click **Next**.

In Windows 98, you see this window (if you don't see it, go to the next section):



9. Select **LPT (Printer Port)**, then click **Next**.

When installation is complete, click **OK** to start the EPSON Screen Calibration utility. Then follow the instructions in the next section.

Calibrating Your Screen and Installing Adobe PhotoDeluxe

1. You should now see the EPSON Screen Calibration utility start window. Click **Next**.
2. Move the slider right or left until the stripes match as closely as possible. click **OK**.
3. When you see a message that setup is complete, click **OK**. The Acrobat Reader installation begins. (Your computer does not restart. **Don't restart your computer until all programs have been installed.**)
4. Follow the on-screen instructions. After the installation is complete, click **OK**. The WinFax installation begins. You may need to insert your Windows CD-ROM, if you see a message requesting it. If you see a message requesting a disk labeled "DLL Installations," click **OK**, click **Browse**, click **OK**, then click **OK** again. (You may have to highlight the folder whose name begins with **mse** in the Browse box.)
5. Click **OK** to restart your computer.
6. Insert your PhotoDeluxe CD-ROM. Follow the instructions to accept the license agreement and install PhotoDeluxe.
7. When you see a message asking to restart your computer, click **OK**. For eFax installation instructions, see your *User's Guide*.

Now you're ready to print, scan, and copy. See your *User's Guide* for instructions.

Macintosh with USB: Making the connection

Before connecting the EPSON Stylus Scan to your Macintosh, you must first install the software.

To connect the printer, you'll need a shielded USB "AB" interface cable, not more than 6.5 feet long.

NOTE FOR iMAC™ If you're using Mac® OS 8.1, you need to install the iMac Update 1.0 before installing the EPSON Stylus Scan software. This update is available online from the Apple® web site. If you're running Mac OS 8.5 or 8.5.1, Apple recommends that you install iMac Update 1.1.

Installing the Software

1. Turn on your Macintosh and make sure any virus protection programs are turned off.
2. Insert the EPSON Stylus Scan 2500 software CD-ROM and double-click the **EPSON SS2500** CD-ROM icon.
3. To install EPSON Personal Copy, Presto! PageManager for EPSON, and Acrobat Reader, double-click the appropriate icon. Then double-click the program's installer icon and follow the on-screen instructions.
4. When you finish installing other software, double-click the **EPSON Stylus Scan Drivers** icon.



5. Double-click the **EPSON Stylus Scan 2500** installer icon.
6. Click **Install**, then follow the on-screen instructions. When you see a message asking for your default paper size, select **Letter**, then click **OK**.

7. When you see a message asking to restart your Macintosh, click **Restart**. The EPSON Screen Calibration utility starts automatically.
8. Move the slider right or left until the stripes match as closely as possible, then click **OK**.

Your Macintosh restarts. Follow the instructions in the next section to install Adobe PhotoDeluxe.

Installing Adobe PhotoDeluxe

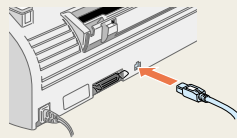
1. Insert your Adobe PhotoDeluxe CD-ROM.
2. Double-click the **Adobe PhotoDeluxe Installer** icon.
3. Follow the instructions on the screen to accept the license agreement and install PhotoDeluxe.
4. When you see a message asking to restart your Macintosh, click **OK**.

For eFax installation instructions, see your *User's Guide*.

Follow the instructions in the next section to connect your EPSON Stylus Scan and select it in the Chooser.

Connecting Your EPSON Stylus Scan and Selecting It in the Chooser

1. Turn on the EPSON Stylus Scan by pressing the **Operate** button.



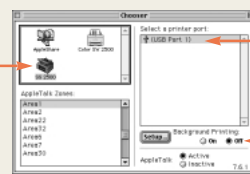
2. Connect the square end of the USB cable to your printer's USB port.

3. Connect the flat end of the USB cable to the USB port on your Macintosh or your USB hub port.

CAUTION If you're using a USB hub, connect the printer to a first tier hub, which is the hub closest to the host computer. If the printer doesn't work with the hub, connect it directly to a USB port on your computer.

4. Select **Chooser** from the Apple menu.

5. Click the **SS 2500** icon.
6. Click the icon for the USB port you're using.
7. Turn on background printing if you want to use it.
8. Close the Chooser.



Now you're ready to print, scan, and copy. See your *User's Guide* for instructions.