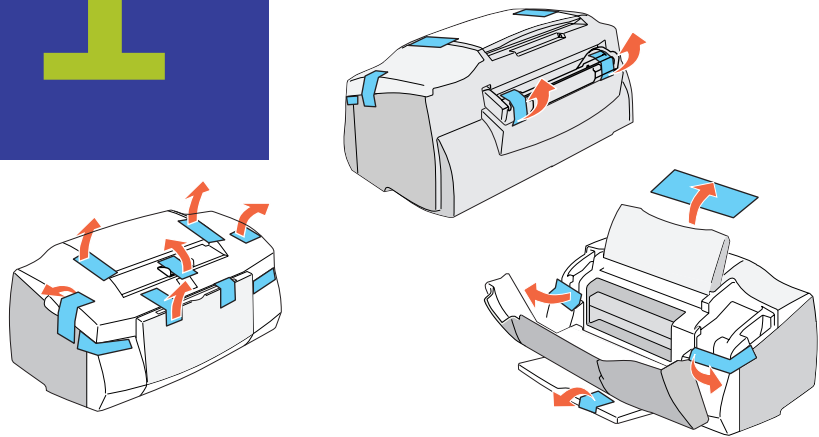


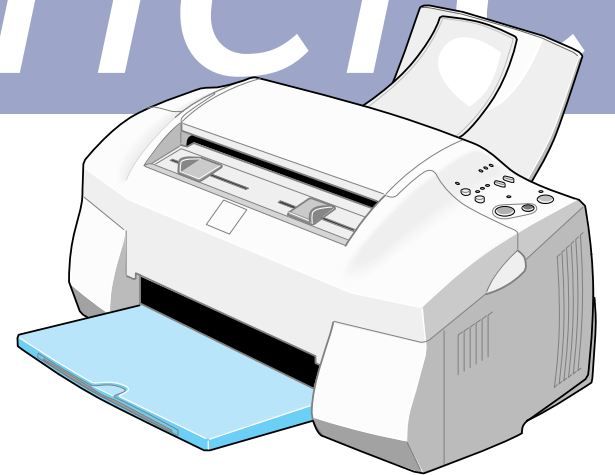
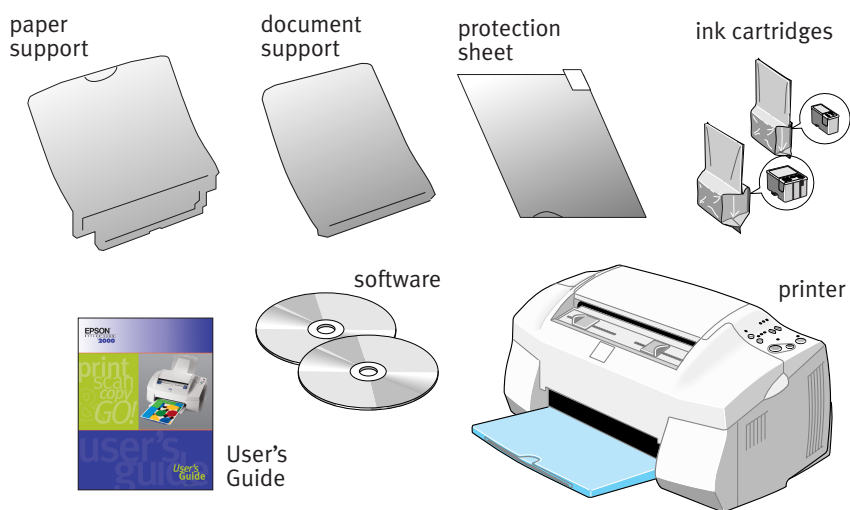
1

Unpack your EPSON Stylus Scan

Remove any tape and packing materials.



Make sure you have all the parts. If any parts are missing, contact EPSON as described in your *User's Guide*. You'll also need a cable to connect the printer to your computer.

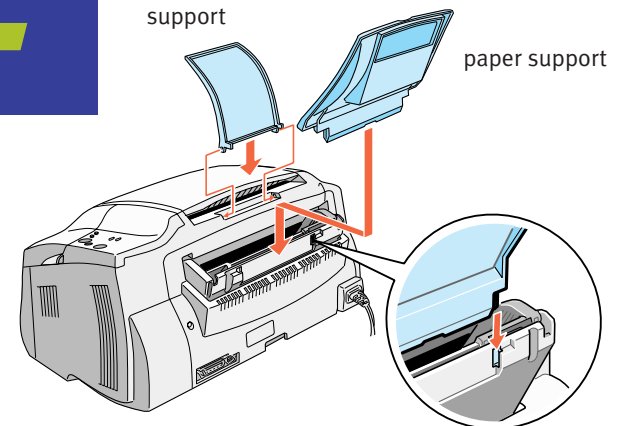


2

Attach the paper and document supports

document support

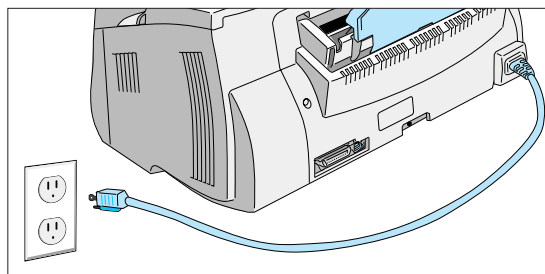
paper support



unfold here

3

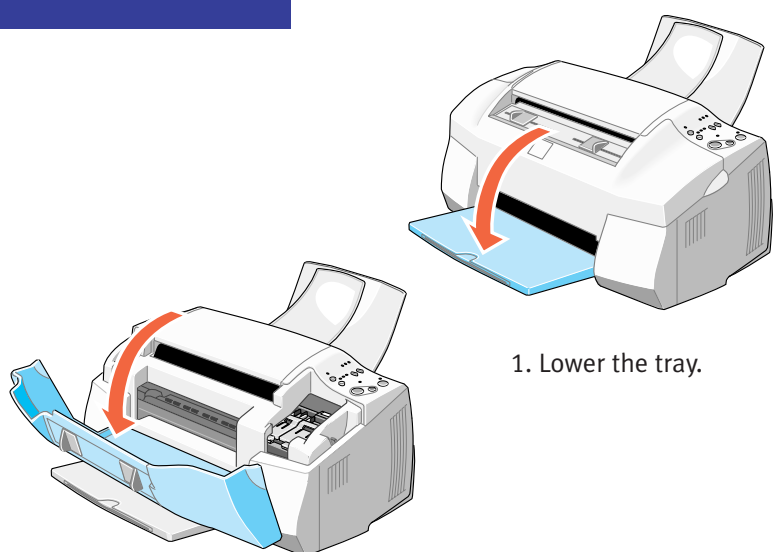
Plug in your EPSON Stylus Scan



CAUTION Make sure you check the system and location requirements and follow all the safety instructions in your *User's Guide*. Plug the printer into a properly grounded outlet. If you need help in setting up your printer, see "Solving Problems" in your *User's Guide*.

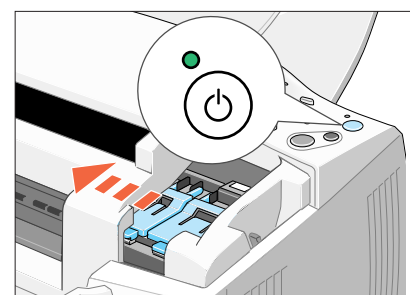
4

Install the ink cartridges



2. Open the front cover.

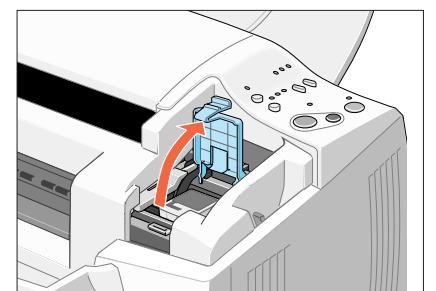
1. Lower the tray.



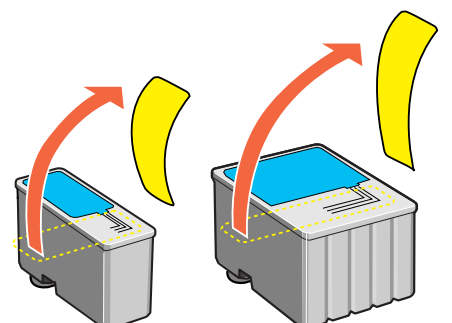
3. Press the power button.

The lights come on and the print head moves.

4. Lift up the clamp.



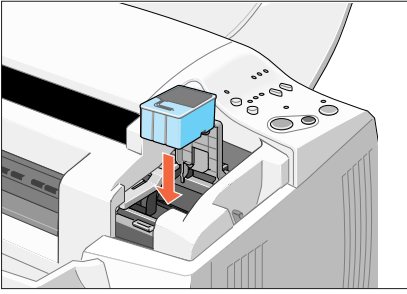
5. Unwrap the ink cartridges. Then pull off only the yellow part of the tape seal on top. *Don't pull off the blue portion or remove the clear seal on the bottom of the cartridge.*



WARNING If ink gets on your hands, wash them thoroughly with soap and water. If ink gets in your eyes, flush them immediately with water. Keep ink cartridges out of the reach of children.


Continue at the top of the next column.

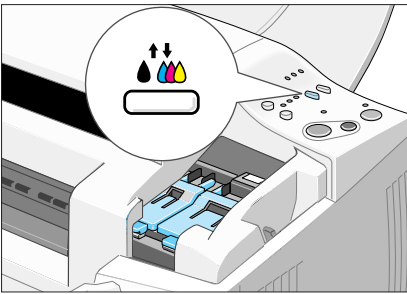
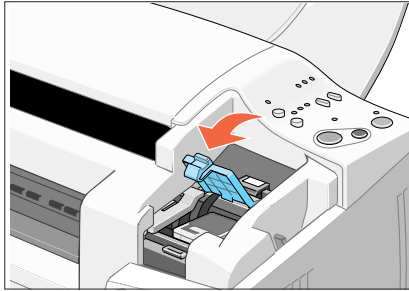
Install the ink cartridges (continued)




6. Insert the color ink cartridge as shown.

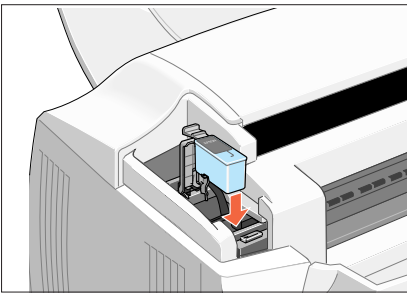
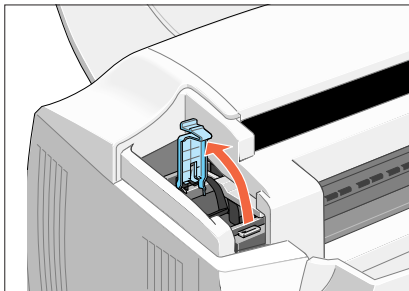
Then press the clamp down until it snaps into place.

The  ink out light goes off.



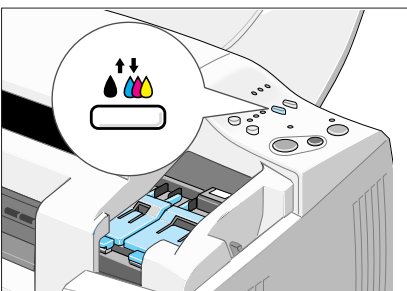
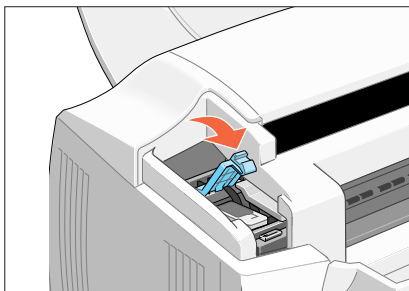
7. Press the  cleaning button. The print head moves to the left so you can install the black ink cartridge.


8. Lift up the clamp.





9. Insert the black cartridge as shown.

Then press the clamp down until it snaps into place.



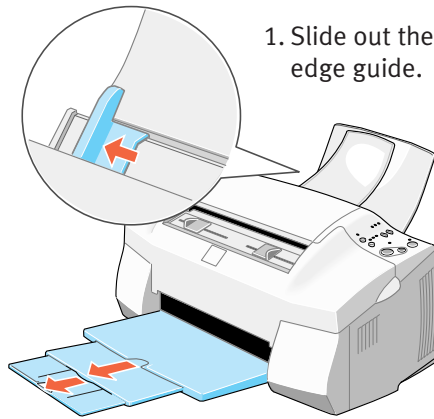
10. Press the  cleaning button to begin charging the ink delivery system. Then close the front cover.

Charging takes about 2 minutes. The  power light flashes and the printer makes various sounds. Don't turn off the printer yet. Wait until the  power light stops flashing and stays on.

CAUTION Don't open the clamps to remove a cartridge except to replace it with a new one. Once you remove a cartridge, you can't reuse it, even if it contains ink. You must install both cartridges and leave them installed for all types of printing. To avoid damaging the printer, never move the print head by hand.

5

Load paper

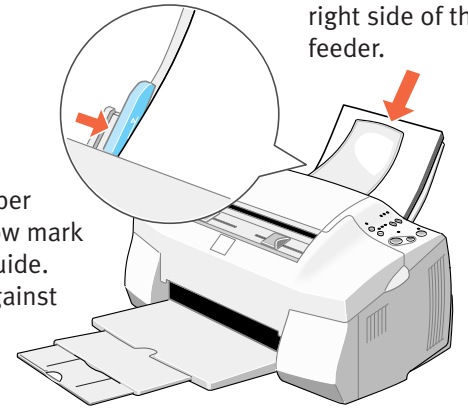


1. Slide out the edge guide.

2. Slide out the tray extensions.

3. Place the stack of paper against the right side of the feeder.

4. Make sure the paper fits under the arrow mark inside the edge guide. Slide the guide against the paper.




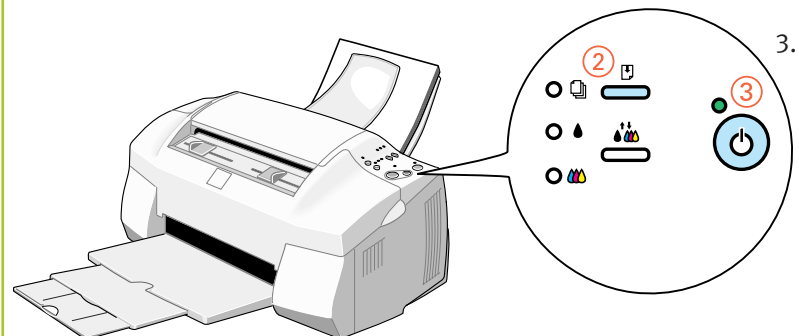
6

Test your EPSON Stylus Scan

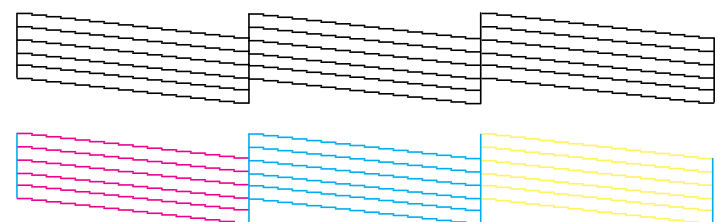
1. Turn off the printer.

2. Hold down the  load/eject button.

3. Press the  power button.



When you release the buttons, the nozzle check page starts to print. This is what it should look like:



If it doesn't look right, you may need to run a print head cleaning cycle. See your *User's Guide* for instructions. If it doesn't print, see "Solving Problems" in your *User's Guide*.

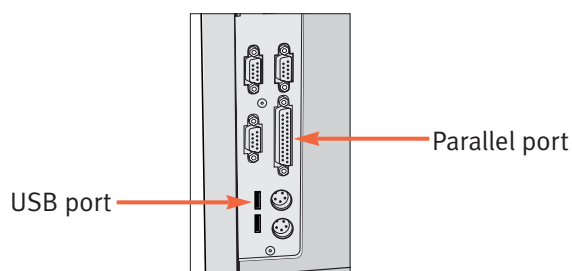
turn over 

7

Connect the EPSON Stylus Scan to your computer and install the software

You'll follow different instructions, depending on what type of system you have:

- Windows® 98 with USB Connection
- Windows 95 or 98 with Parallel Connection
- Macintosh® with USB Connection



Before you start, make sure you have the two CD-ROMs that came in the box with your EPSON Stylus Scan. If you don't have a CD-ROM drive. Contact EPSON as described in your *User's Guide*.

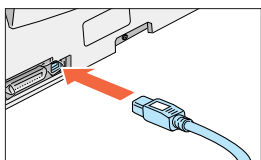
Windows 98 with USB: Making the connection

First you'll connect the EPSON Stylus Scan to your computer, then you'll install the software.

To connect the printer, you'll need a shielded USB "AB" interface cable, not more than 6.5 feet long.

Connecting Your EPSON Stylus Scan

1. Make sure your computer is turned on.
2. Turn on the printer by pressing the power button.



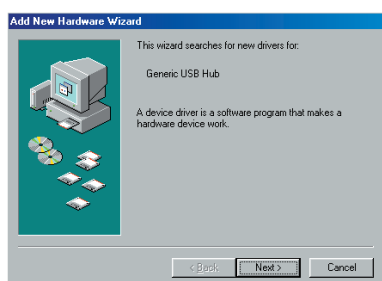
3. Connect the square end of the USB cable to your printer's USB port.

4. Connect the flat end of the cable to your computer's USB port or USB hub port. Windows detects your printer.
5. Follow the instructions in the next section to install your software.

CAUTION If you're using a USB hub, connect the printer to a first tier hub. If the printer doesn't work with the hub, connect it directly to a USB port on your computer.

Installing Your Driver Software

NOTE Make sure you have your Microsoft® Windows 98 CD-ROM available. If you don't have this CD-ROM, make sure you know where to find the Windows 98 driver files on your hard disk (for example, in the Win 98 folder.) If you need help, contact your computer manufacturer. Don't click **Cancel** at any time during the installation process.



1. Click **Next**, then continue clicking **Next** on each window that appears.
2. If you see a message asking for your Windows 98 CD-ROM, insert it and click **OK**. (Or select **Specify a location**, click **Browse**, and locate the Windows 98 driver files on your hard disk drive.)

3. When you see the message that Windows has finished installing, click **Finish**. Windows detects a USB printer.
4. Remove the Windows 98 CD-ROM (if necessary) and insert the EPSON Stylus Scan 2000 CD-ROM.
5. Repeat step 1. When you see the window shown below, select **Specify a location**, click **Browse**, and locate the \EPSON folder on your EPSON Stylus Scan 2000 CD-ROM.



6. Click **Next**, then follow the instructions on the screen to complete the installation. You may need to switch between the EPSON Stylus Scan 2000 CD-ROM and your Windows 98 CD-ROM several times.

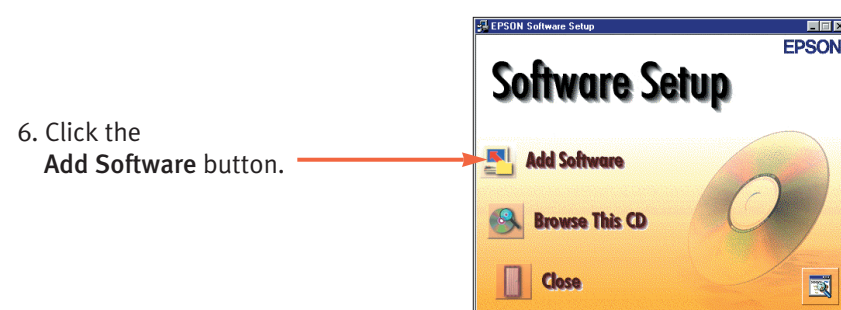
You see the Screen Calibration utility.

7. Move the slider right or left until the stripes match as closely as possible. Then click **OK**.
8. Click **Finish**. Then continue with the instructions in the next section.

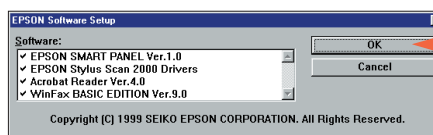
Finishing the Software Installation

Windows detects the scanner portion of your EPSON Stylus Scan 2000.

1. Click **Next**, then continue clicking **Next** on each window that appears.
2. Make sure the EPSON Stylus Scan 2000 CD-ROM is in your drive. If you need to specify a location, click **Browse**, and locate the \EPSON folder on your EPSON Stylus Scan 2000 CD-ROM. Then click **Next** and follow the instructions on the screen.
3. When you see a message that Setup is complete, click **OK**, then click **Finish**.
4. Double-click **My Computer** on your desktop.
5. Double-click the **Epson_ss2000** CD-ROM icon. Then double-click **Cdsetup**.

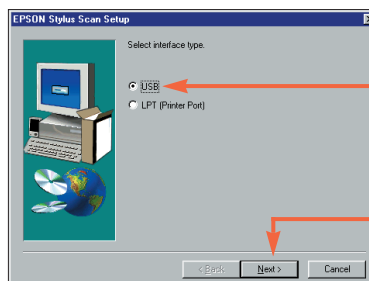


6. Click the **Add Software** button.



7. Click **OK**.

8. Follow the on-screen instructions to install the EPSON Smart Panel. When the installation is complete, you see the EPSON Stylus Scan Setup window. Click **Next**.



9. Select **USB**, then... click **Next**.

Continue with the instructions in the next section.

Installing Adobe® PhotoDeluxe® and Additional Software

1. Follow the on-screen instructions to install Acrobat® Reader and WinFax®. After each installation is complete, the next one begins automatically. Don't restart your computer until all the programs have been installed. You may need to switch between the EPSON Stylus Scan 2000 CD-ROM and your Microsoft Windows 98 CD-ROM again.
 2. If you see a message requesting a disk labeled 'DLL. Installations,' click **OK**, click **Browse**, click **OK**, then click **OK** again.
 3. After WinFax has installed, click **Finish** to restart your computer. Follow the instructions on the screen to configure and register WinFax.
 4. Insert your PhotoDeluxe CD-ROM. Follow the instructions to accept the license agreement and install PhotoDeluxe.
 5. When you see another message asking to restart your computer, click **OK**. Windows restarts.
- Now you're ready to print, scan, and copy. See your *User's Guide* for instructions.

Windows 95 or 98 with parallel: Making the connection

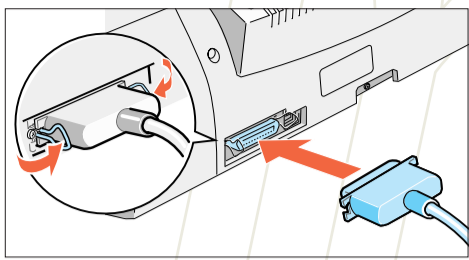
First, you'll connect the EPSON Stylus Scan to your computer, then you'll install the software.

To connect the printer, you'll need a high-speed, bidirectional, IEEE-1284 parallel cable, not more than 6 feet long.

If you have a USB port (Windows 98 only), we recommend using it rather than the parallel port. See the previous section for instructions.

Connecting Your EPSON Stylus Scan

1. Make sure both the printer and computer are turned off.



2. Plug the parallel cable into the printer's parallel connector, then fasten it with the wire clips.

3. Plug the other end of the cable into your computer's parallel port.

CAUTION

Connect the EPSON Stylus Scan directly to the parallel port on your computer. Do not use a pass-through port on a Zip® drive or any other accessory. If your computer has more than one parallel port, connect the printer to the built-in port (LPT1). To use a different port, see your Windows help. For the fastest scanning and printing, enable your computer's ECP/DMA mode, if possible. See your computer documentation for instructions.

Installing Your Driver Software

1. Turn on your computer and wait until you see the Windows desktop icons.

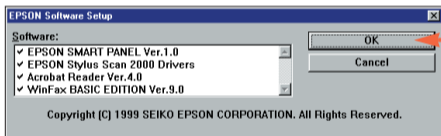
IMPORTANT: If at any time you see a message that Windows has detected your printer and asking you to install a driver, **ALWAYS** select **Cancel**. You can't install your printer software that way.

2. Insert the EPSON Stylus Scan 2000 Software CD-ROM.
3. Double-click **My Computer** on your screen.
4. Double-click the **Epson_ss2000** CD-ROM icon. Then double-click **Cdsetup**.

5. Click the **Add Software** button.



6. Click **OK**.

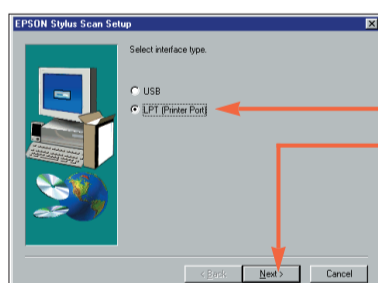


7. Follow the on-screen instructions to install the EPSON Smart Panel.

When installation is complete, you see the EPSON Stylus Scan Setup Window.

8. Click **Next**.

In Windows 98, you see this window (if you don't see it, go to the next section):



9. Select **LPT (Printer Port)**, then click **Next**.

When installation is complete, click **OK** to start the EPSON Screen Calibration utility. Then follow the instructions in the next section.

Calibrating Your Screen and Installing Adobe PhotoDeluxe

1. You should now see the EPSON Screen Calibration utility start box. Click **Next**.
2. Move the slider right or left until the stripes match as closely as possible. Then click **OK**. When calibration is complete, the Acrobat Reader installation begins automatically. Don't restart your computer until all programs have been installed.
3. Follow the on-screen instructions. After the installation is complete, click **OK**. The WinFax installation begins. You may need to insert your Windows 95 or 98 CD-ROM, if you see a message requesting it. If you see a message requesting "DLL Installations," click **OK**, click **Browse**, click **OK**, then click **OK** again.
4. Click **OK** to restart your computer.
5. Insert your PhotoDeluxe CD-ROM. Follow the instructions to accept the license agreement and install PhotoDeluxe.
6. When you see a message asking to restart your computer, click **OK**.

Now you're ready to print, scan, and copy. See your *User's Guide* for instructions.

Macintosh with USB: Making the connection

Before connecting the EPSON Stylus Scan to your Macintosh, you must first install the software.

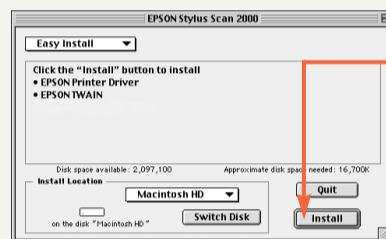
To connect the printer, you'll need a shielded USB "AB" interface cable, not more than 6.5 feet long.

NOTE FOR iMAC™

If you're using Mac® OS 8.1, you need to install the iMac Update 1.0 before installing the EPSON Stylus Scan software. This update is available online from the Apple® Web site. If you're running Mac OS 8.5 or later, Apple recommends that you install iMac Update 1.1.

Installing the Software

1. Turn on your Macintosh and make sure any virus protection programs are turned off.
2. Insert the EPSON Stylus Scan 2000 Software CD-ROM.
3. Double-click the **EPSON SS2000** icon to open the CD-ROM.
4. To install EPSON Personal Copy, Presto!™ PageManager for EPSON, and Acrobat Reader, double-click the appropriate folder. Then double-click the **Disk 1** folder (if necessary), and double-click the corresponding installer icon. Follow the on-screen instructions.
5. After all applications have been installed, double-click the EPSON Stylus Scan Drivers folder.
6. Double-click the EPSON Stylus Scan 2000 icon.



7. Click **Install**, then follow the on-screen instructions. When you see a message asking for your default paper size, select **LETTER**, then click **OK**.

8. When you see a message asking to restart your Macintosh, click **Restart**. The EPSON Screen Calibration utility starts automatically.
9. Move the slider right or left until the stripes match as closely as possible. Then click **OK**.

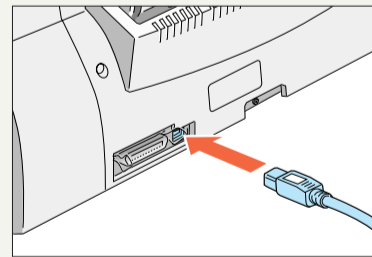
Your Macintosh restarts. Follow the instructions in the next section to install Adobe PhotoDeluxe.

Installing Adobe PhotoDeluxe

1. Insert your PhotoDeluxe CD-ROM.
2. Double-click the Installer icon.
3. Follow the instructions on the screen to accept the license agreement and install PhotoDeluxe.
4. When you see a message asking to restart your Macintosh, click **OK**. Follow the instructions in the next section to connect your EPSON Stylus Scan and select it in the Chooser.

Connecting Your EPSON Stylus Scan and Selecting It in the Chooser

1. Turn on the EPSON Stylus Scan by pressing the power button.



2. Connect the square end of the USB cable to your printer's USB port.

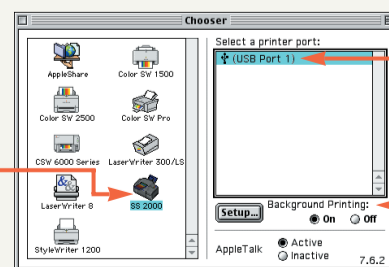
3. Connect the flat end of the cable to the USB port on your Macintosh or your USB hub port.

CAUTION

If you're using a USB hub, connect the printer to a first tier hub. If the printer doesn't work with the hub, connect it directly to a USB port on your Macintosh.

4. Select **Chooser** from the Apple menu.

5. Click the **SS 2000** icon.



6. Click the icon for the USB port you're using.
7. Turn on background printing if you want to use it.
8. Close the Chooser.

Now you're ready to print, scan, and copy. See your *User's Guide* for instructions.