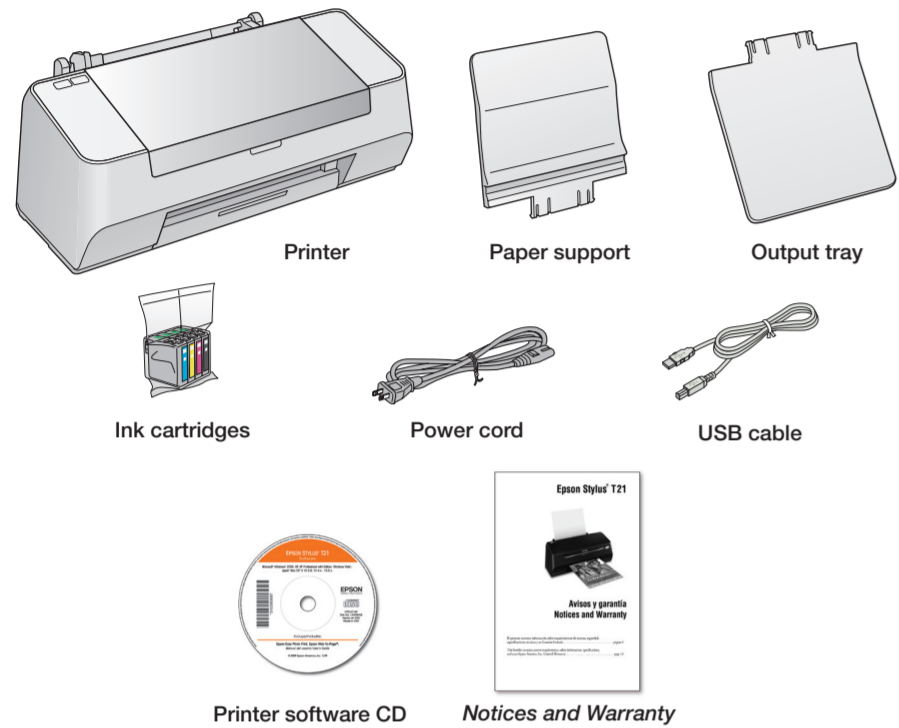


EPSON STYLUS® T21 Start Here

Read these instructions before using the printer.

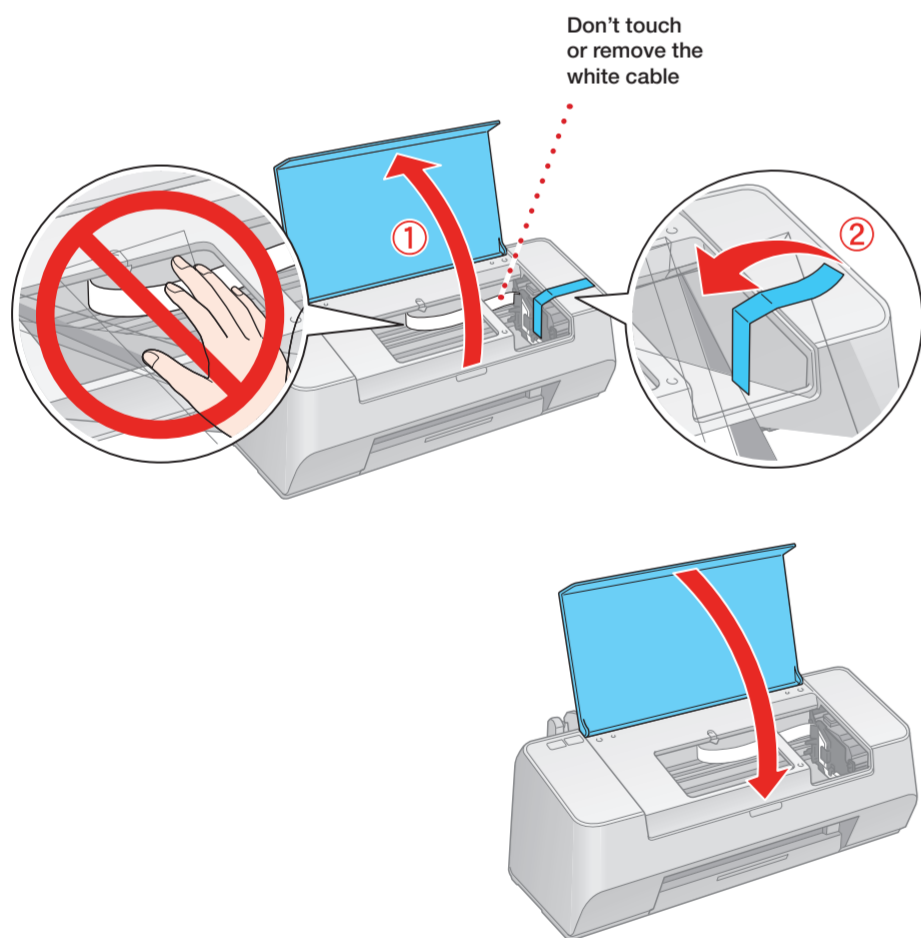
1 Unpack

1 Make sure you have all these items. If anything is missing, contact Epson as described on the back of this sheet.



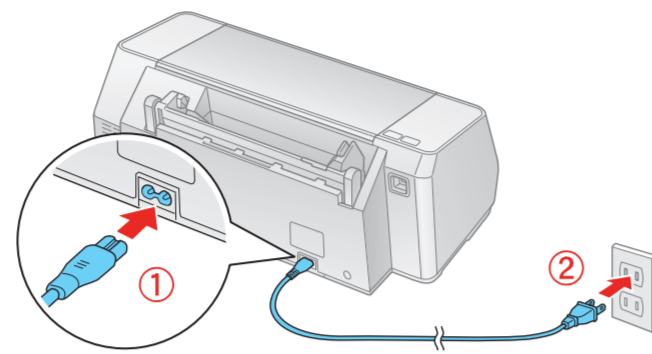
Caution: Do not open ink packages until you are ready to install the ink. Cartridges are vacuum packed to maintain reliability.

2 Remove all the protective materials from outside and inside the printer.



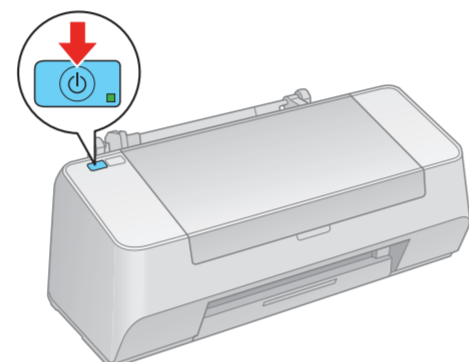
2 Turn On the Printer

1 Connect the power cord.



Note: Do not connect the printer to your computer yet.

2 Press the power button to turn on the printer. The power light flashes and then stays green.



Caution: Use only the printer's power button to turn the printer on and off.

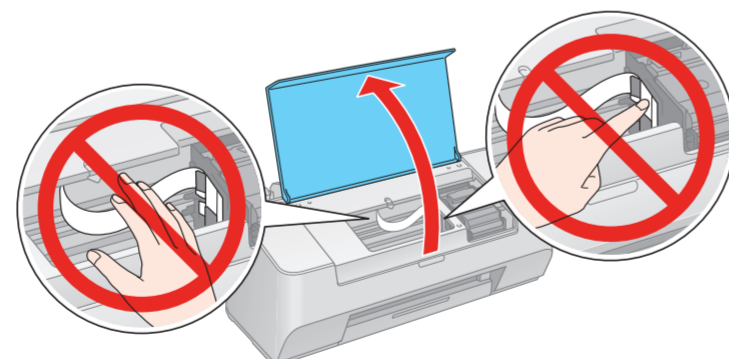
3 Install Ink Cartridges

Caution: Keep ink cartridges out of the reach of children and do not drink the ink.

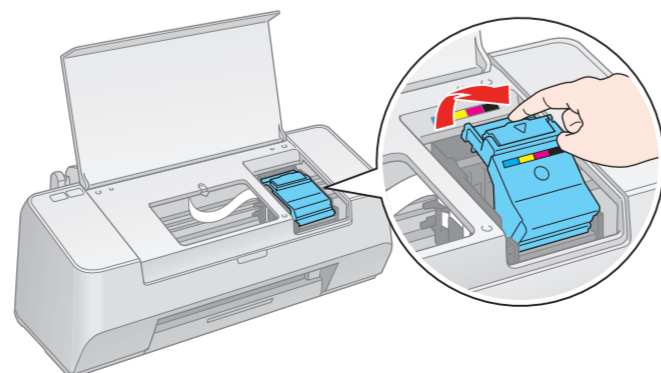
Note: The first time you install ink cartridges, the printer uses some ink to charge the printing system, so print yields may be lower with the first cartridges. Subsequent ink cartridges will last their full rated life.

Don't load paper before installing ink cartridges.

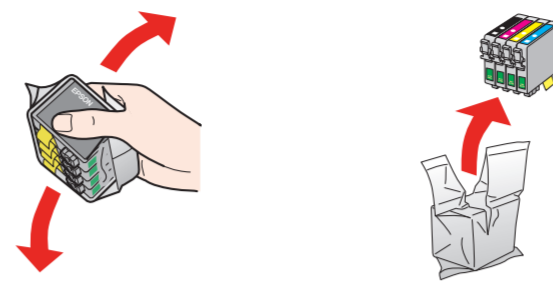
1 Open the printer cover.



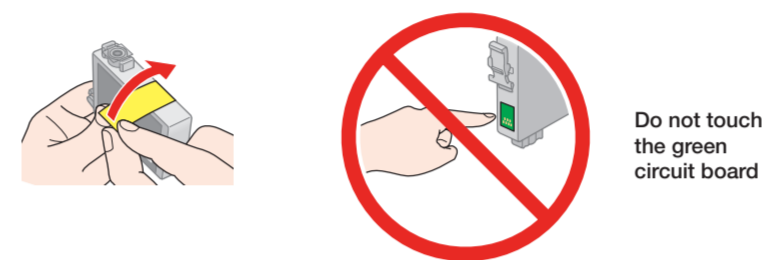
2 Lift open the ink cartridge cover.



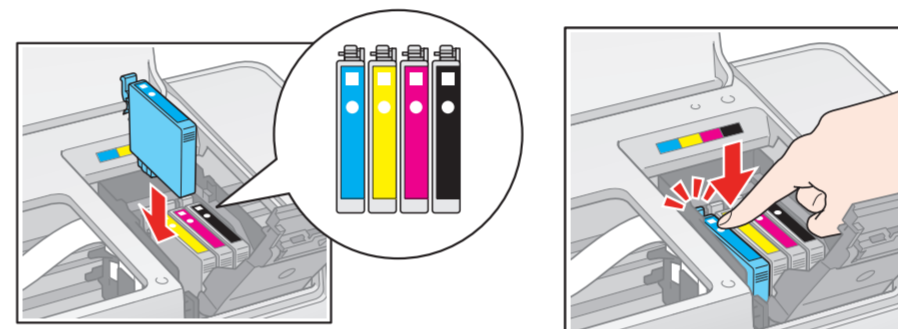
3 Gently shake the ink cartridges, then unpack them.



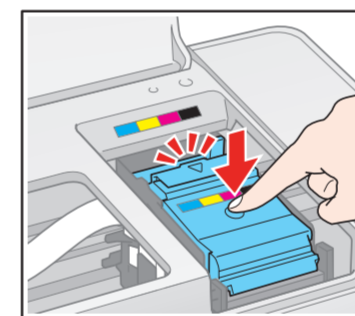
4 Remove only the yellow tape from each cartridge.



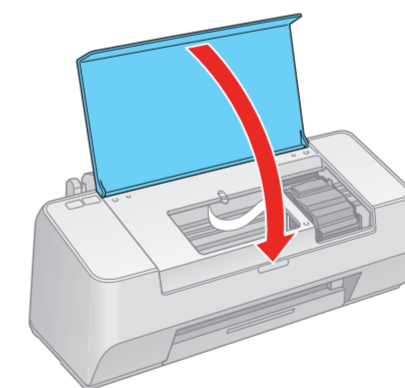
5 Insert each cartridge into the correct slot for its color. Push them down to make sure they click into place.



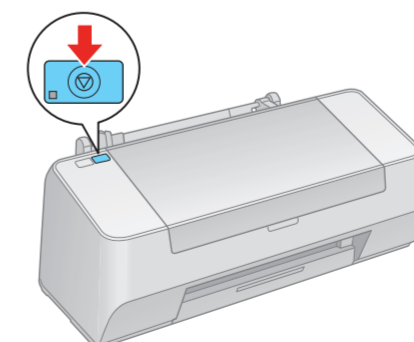
6 Close the ink cartridge cover and press it down.



7 Close the printer cover.



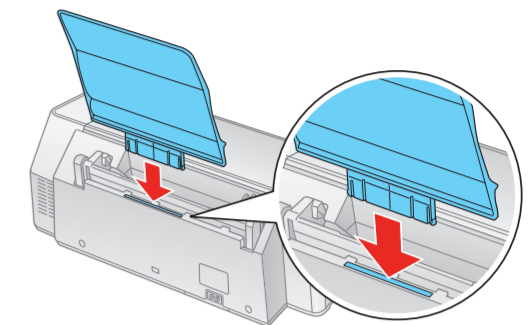
8 Press the maintenance button to charge the ink. Charging takes approximately 2 minutes.



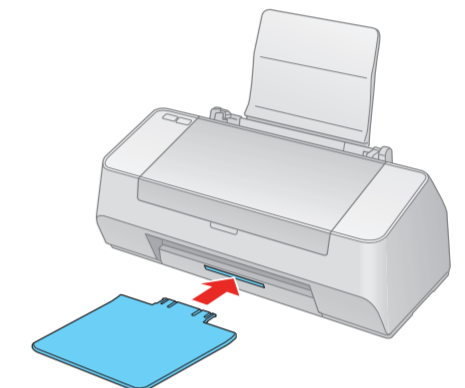
Caution: Never turn off the printer while the green power light is flashing or you'll waste ink.

4 Load Paper

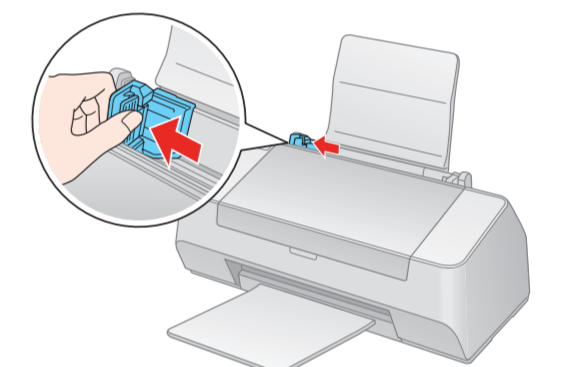
1 Slide the paper support into the slot at the back of the printer.



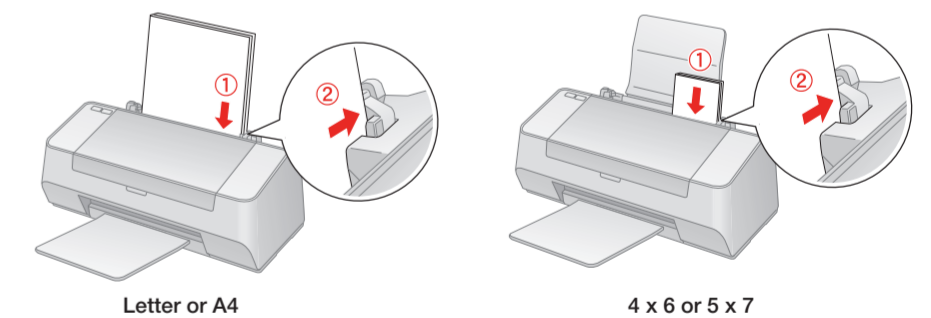
2 Insert the output tray into the slot at the front of the printer.



3 Squeeze the left edge guide and slide it to the left.

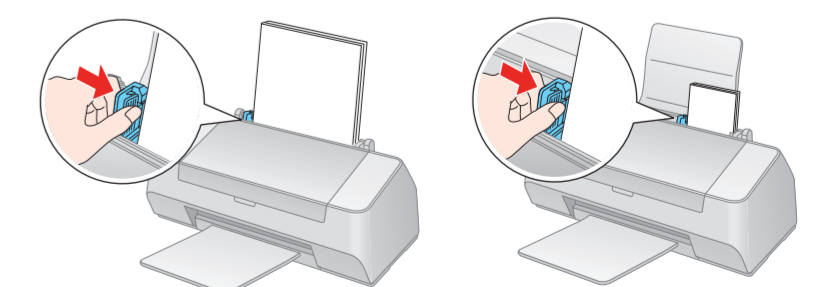


4 Fan a few sheets of paper and place them against the right edge guide. Load the printable side face-up and the short edge first (even when printing landscape-oriented documents).



Note: Do not load the paper sideways.

5 Squeeze the left edge guide and slide it against the paper.



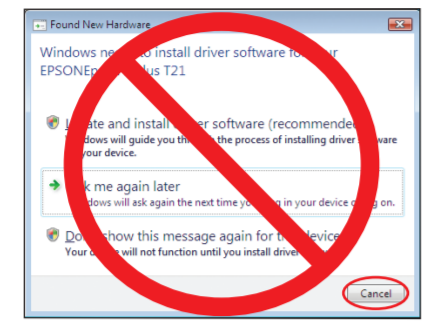
5 Install Software

Your software works with Windows® 2000, XP, and XP Professional x64 Edition and Windows Vista®, and Mac OS® X 10.3.9, 10.4.x-10.5.x.

Windows

1 Make sure your printer is on but **NOT CONNECTED** to your computer.

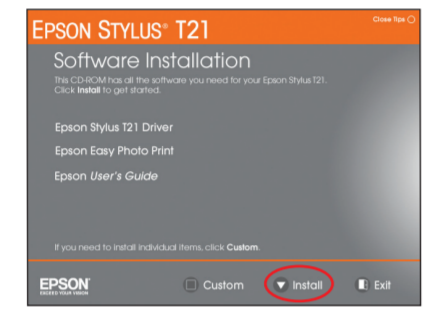
Note: If you see a screen like this, click **Cancel** and disconnect the USB cable. You cannot install your software that way.



2 Insert the Epson Stylus T21 CD.

With Windows 2000 or XP, go to step 4. With Windows Vista, go to step 3.

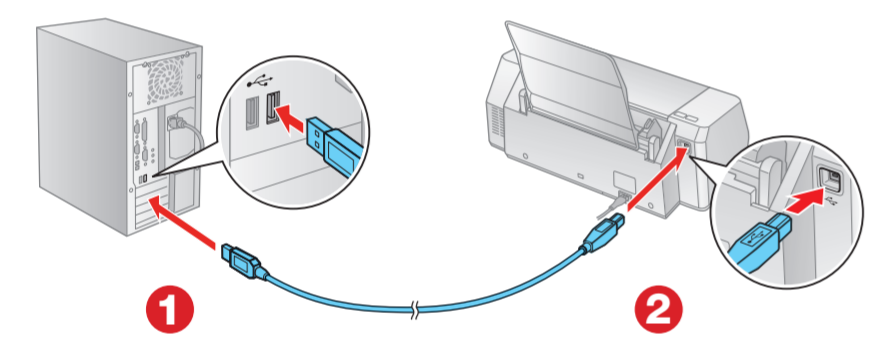
3 With Windows Vista, if you see the Auto Play window, click **Run Setup.exe**. When you see the User Account Control screen, click **Continue**.



4 Select **English**.

5 Click **Install** and follow the on-screen instructions. Software installation takes several minutes.

6 When prompted, connect the USB cable to the printer and any open USB port on your computer.



Note: If installation doesn't continue after a moment, make sure you securely connected and turned on the printer.

7 When you're done, remove the CD.

You're ready to print! Follow the instructions in the next column.

Macintosh

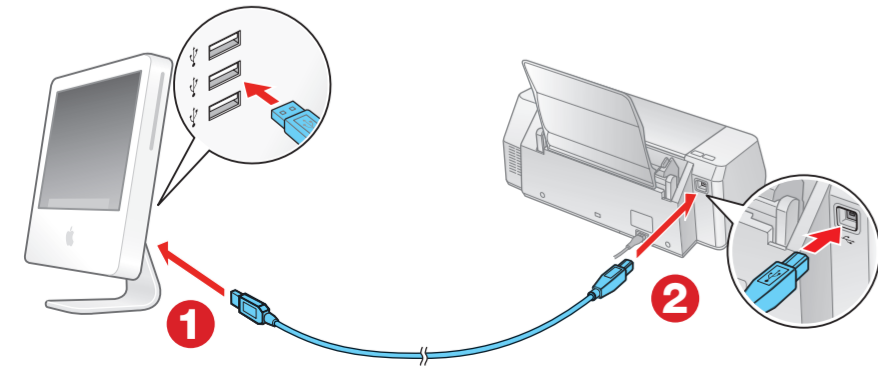
1 Insert the Epson Stylus T21 CD.

2 Double-click the icon.

3 Click **Install** and follow the on-screen instructions. Software installation and setup take several minutes.

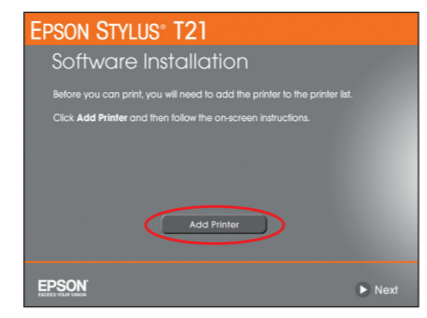


4 When prompted, connect the USB cable to the printer and any open USB port on your computer. Make sure the printer is turned on.



With Mac OS X 10.5.x, go to step 8.
With Mac OS X 10.3.9 to 10.4.x, go to step 5.

5 When you see this screen, click **Add Printer**.



6 Then follow the tips to the right of the screen to add the printer.



7 Click **Next** again, if necessary.

8 Follow the on-screen instructions to install the rest of the software and print a test page.

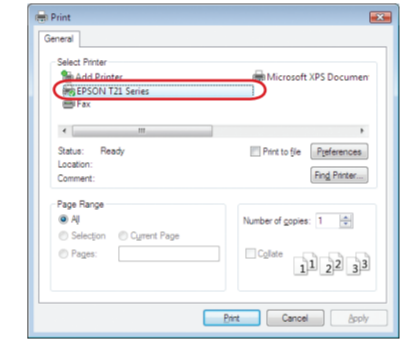
9 Eject the CD.

You're ready to print! Follow the instructions in the next column.

Printing From Windows

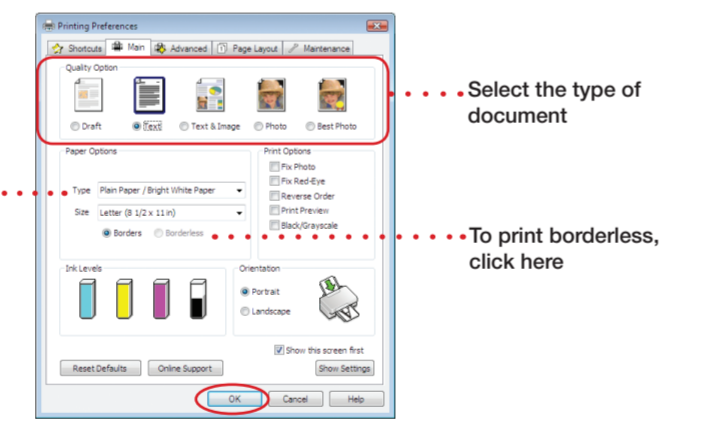
1 Load plain paper or special Epson media for the document or photo you want to print.

2 Open your document or photo and select **Print** or **Print Setup** from the File menu. You see a window like this:



3 Make sure **EPSON T21 Series** is selected.

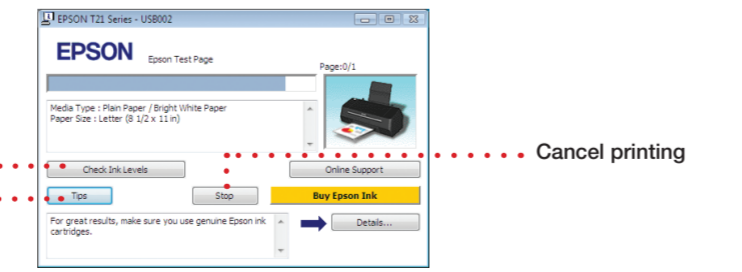
4 Click the **Properties** or **Preferences** button. (If you see a **Setup**, **Printer**, or **Options** button, click it first. Then click **Properties** or **Preferences** on the next screen.) You see the basic print settings window:



5 Choose your settings, then click **OK**.

6 Click **Print**.

After a moment, printing begins and you see this print status window:



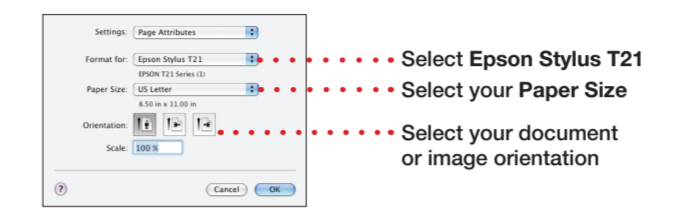
Current ink levels
Display tips for better printing

Printing on a Macintosh

Note: For instructions on printing in Mac OS X 10.5.x, see the on-screen *User's Guide*.

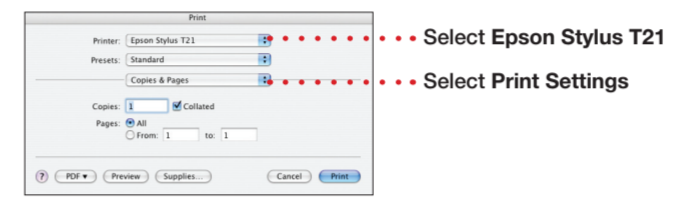
1 Load plain paper or special Epson media for the document or photo you want to print.

2 Open the document or photo and select **Page Setup** from the File menu. You see the Page Setup window:

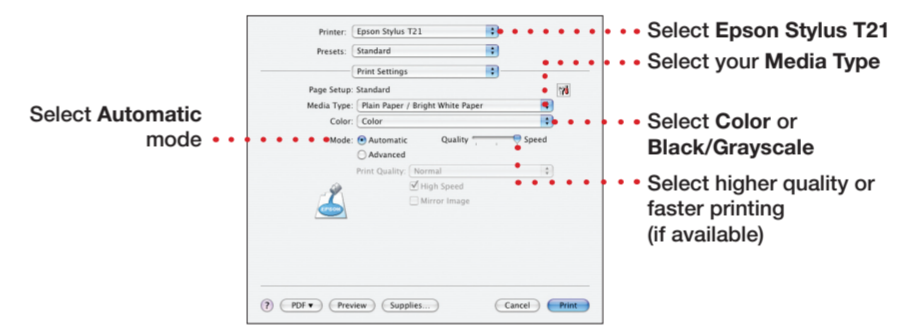


3 Select **Epson Stylus T21** in the Format for menu, and choose your paper size and document orientation. Then click **OK**.

4 Open the File menu and select **Print**. You see a window like this one:

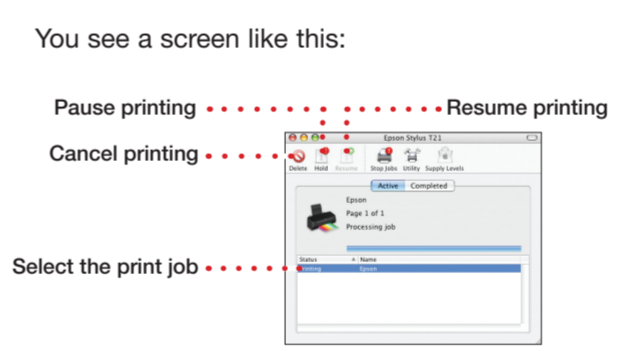


5 Select **Epson Stylus T21** in the Printer menu and open the **Print Settings** menu:



6 Choose your print settings and then click **Print**.

7 To monitor the progress of your print job, click the printer icon when it appears in the dock on the bottom of your desktop.



8 When you're finished, close the Printer window.

Any Questions?

Look here for answers:
On-screen User's Guide
Click the Epson Stylus T21 *User's Guide* desktop shortcut for easy access to information about your printer.

On-screen help with your software
Select **Help** or **?** when you're using your software.

Epson Technical Support
www.latin.epson.com

Telephone Support

Argentina	(54-11) 5167-0300	Mexico	01-800-087-1080
Chile	(56-2) 230-9500	Mexico City	(52-55) 1323-2052
Colombia	(57-1) 523-5000	Peru	(51-1) 418-0210
Costa Rica	(50-6) 2210-9555	Venezuela	(58-212) 240-1111
	800-377-6627		

If your country doesn't appear on the list, contact your nearest Epson sales office.

Problems?

If your problem is listed here, try these suggestions. For more information, see your software Help or your on-screen *Epson User's Guide*.

The maintenance light is on (nothing prints).
If paper is out, load more paper and press the maintenance button to resume printing.

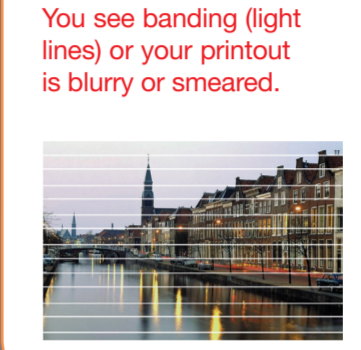
If paper is jammed, press the maintenance button to eject it.

If the paper doesn't eject, turn off the printer, open the cover, and pull the paper out from the front. Then reload paper, turn the printer on, and press the maintenance button.

The print head nozzles may need cleaning; see the on-screen *User's Guide* for instructions.

The ink cartridges may need replacing. See the on-screen *User's Guide* for instructions.

Make sure the printable side of the paper is face-up. It's usually whiter or shinier.



Need Paper and Ink?

For the best prints, use genuine Epson ink and paper. Get them from your local store or contact Epson for dealer referral.



Photo Paper Glossy
Bright, instant-drying paper for great looking photos and projects. Available in different sizes, with or without margins.

Genuine Epson Inks

Look for the numbers below to find your cartridges. It's as easy as remembering your number!



Color	Ink Cartridge Code
Black	90N
Cyan	73N
Magenta	73N
Yellow	73N

Epson and Epson Stylus are registered trademarks and Epson Exceed Your Vision is a registered logomark of Seiko Epson Corporation. DURABrite is a registered trademark of Epson America, Inc. General Notice: Other product names used herein are for identification purposes only and may be trademarks of their respective owners. Epson disclaims any and all rights in those marks.

This information is subject to change without notice.
© 2009 Epson America, Inc. 1/09

CPD-27147

Cut out the card to the right and keep it with you when purchasing replacement ink cartridges.

EPSON STYLUS® T21 Ink Cartridges

Color	Ink Cartridge Code
Black	90N
Cyan	73N
Magenta	73N
Yellow	73N