

EPSON[®] STYLUS[®] 1500

INK JET PRINTER

Setup and Software Guide for Macintosh[®]

All rights reserved. No part of this publication may be reproduced, stored in a retrieval system, or transmitted in any form or by any means, electronic, mechanical, photocopying, recording, or otherwise, without the prior written permission of Seiko Epson Corporation. No patent liability is assumed with respect to the use of the information contained herein. Neither is any liability assumed for damages resulting from the use of the information contained herein.

Neither Seiko Epson Corporation nor its affiliates shall be liable to the purchaser of this product or third parties for damages, losses, costs, or expenses incurred by purchaser or third parties as a result of: accident, misuse, or abuse of this product or unauthorized modifications, repairs, or alterations to this product, or (excluding the U.S.) failure to strictly comply with Seiko Epson Corporation's operating and maintenance instructions.

Seiko Epson Corporation shall not be liable against any damages or problems arising from the use of any options or any consumable products other than those designated as Original EPSON Products or EPSON Approved Products by Seiko Epson Corporation.

EPSON, EPSON Stylus, and EPSON ESC/P are registered trademarks and EPSON ESC/P 2 is a trademark of Seiko Epson Corporation.

General Notice: Other product names used herein are for identification purposes only and may be trademarks of their respective owners. EPSON disclaims any and all rights in those marks.

The Energy Star emblem does not represent EPA endorsement of any product or service.



FCC Compliance Statement For United States Users

This equipment has been tested and found to comply with the limits for a Class B digital device, pursuant to Part 15 of the FCC Rules. These limits are designed to provide reasonable protection against harmful interference in a residential installation. This equipment generates, uses, and can radiate radio frequency energy and, if not installed and used in accordance with the instructions, may cause harmful interference to radio or television reception. However, there is no guarantee that interference will not occur in a particular installation. If this equipment does cause interference to radio and television reception, which can be determined by turning the equipment off and on, the user is encouraged to try to correct the interference by one or more of the following measures.

- ☐ Reorient or relocate the receiving antenna.
- ☐ Increase the separation between the equipment and receiver.
- ☐ Connect the equipment into an outlet on a circuit different from that to which the receiver is connected.
- ☐ Consult the dealer or an experienced radio/TV technician for help.

WARNING

The connection of a non-shielded equipment interface cable to this equipment will invalidate the FCC Certification of this device and may cause interference levels which exceed the limits established by the FCC for this equipment. It is the responsibility of the user to obtain and use a shielded equipment interface cable with this device. If this equipment has more than one interface connector, do not leave cables connected to unused interfaces. Changes or modifications not expressly approved by the manufacturer could void the user's authority to operate the equipment.

For Canadian Users

This digital apparatus does not exceed the Class B limits for radio noise emissions from digital apparatus as set out in the radio interference regulations of the Canadian Department of Communications.

Le présent appareil numérique n'émet pas de bruits radioélectriques dépassant les limites applicables aux appareils numériques de Classe B prescrites dans le règlement sur le brouillage radioélectrique édicté par le Ministère des Communications du Canada.

Contents

Introduction

Getting the Most Out of Your Printer	2
Three Resolutions to Choose From	2
Special Papers	3
Specially Formulated Ink	3
Automatic Halftone Settings	3
Where to Get Help	4
Electronic Support Services	5
Important Safety Instructions	6

Chapter 1 Setting Up the Printer

System Requirements	1-1
Choosing a Location	1-2
Unpacking the Printer	1-3
Attaching the Paper Support and Output Tray	1-4
Plugging In and Turning On the Printer	1-5
Installing the Black Ink Cartridge	1-6
Installing the Optional Color Upgrade Kit	1-8
Installing the Color Print Head	1-9
Installing the Color Ink Cartridge	1-12
If You Are New to Color Printing	1-16
Loading Paper in the Sheet Feeder	1-17
Testing the Printer	1-21
Installing the LocalTalk or Ethernet Board	1-23
Connecting the Printer to Your Macintosh	1-24
LocalTalk Connection	1-24
Ethernet Connection	1-25
Turning On the Printer's Network Interface Mode	1-26

Chapter 2 Installing and Using the Printer Driver

Installing the Macintosh Printer Driver	2-1
Assigning a Name to the Printer	2-4
Using the Chooser to Select the Printer	2-4
Using the Macintosh Printer Driver	2-6
Accessing the Driver	2-6
Color/Halftone Setting	2-9
Page Gap	2-11
Print Settings	2-11
Visual Effects Settings	2-14
Selecting Paper Size and Orientation Using Page Setup . . .	2-14

Chapter 3 Using the Printer Driver Utilities

Managing Print Jobs on the Macintosh	3-1
Calibrating the Printer with Bi-D Calibration	3-2

Index

Introduction

The EPSON® Stylus® 1500 is an affordable, high-quality ink jet printer that produces realistic grayscale images, sharp text, and line art at a resolution of 720 × 720 dpi. The Stylus 1500 comes equipped for printing in black ink; however, you can easily upgrade it to print in color with the optional Color Upgrade Kit. With the Color Upgrade Kit, the Stylus 1500 can print up to 16 million colors to produce full-color, photo-quality images.

Note that to connect the printer to an Apple® Macintosh® or to an AppleTalk® or EtherTalk® network so multiple Macintosh computers can share the printer, you need to obtain a LocalTalk® (model # C823121) or Ethernet (model # C823312) interface board. Contact your dealer or call EPSON Accessories at (800) 873-7766 (U.S. only). In Canada, call (800) BUY-EPSON for sales locations. Then follow the instructions in Chapter 1 to install the board in your computer.

The Stylus 1500 is easy to install and use. You simply set up the printer, install the LocalTalk or Ethernet board, and install the Macintosh printer driver as described in this book. The printer also has a built-in parallel interface so you can connect it to an IBM® PC compatible computer. For information on other interface options, see “Using Optional Interfaces” in the *Reference Guide*.

Note:

For instructions on using the printer with a PC, see the Setup and Software Guide for Windows.®

This manual explains how to do the following:

- ❑ Set up your printer, load plain paper, install the LocalTalk or Ethernet board, and connect your printer to your computer. See Chapter 1 to begin.

- ❑ Install and use the printer driver to print your documents. See Chapter 2 for step-by-step instructions.
- ❑ Manage your print jobs and calibrate the printer using the utilities that came with the printer driver; see Chapter 3.

After you've installed the driver, select the README1st icon in the Driver Disk Window for the latest information.

Refer to the *Reference Guide* for instructions on operating and maintaining your printer, as well as for troubleshooting tips and technical specifications.

Getting the Most Out of Your Printer

The printer supports a wide variety of settings that let you improve print quality or speed up printing. You can customize these settings using the printer driver to produce a variety of image types with EPSON's specially formulated inks and papers.

Three Resolutions to Choose From

Resolution is a measure of the amount of detail that can be represented. The higher the resolution, the more detailed and realistic the image, and the longer it takes to print. For printed images, resolution is measured in dots per inch (dpi).

The printer has three resolutions, or printing modes: 720 dpi, 360 dpi, and 180 dpi. Use 720 dpi for the best possible images. For high-quality images in less time, use 360 dpi. When speed is important and draft quality is good enough, use 180 dpi. For guidelines on selecting the best resolution for your print job, see Chapter 2.

Special Papers

The type of paper you use is very important. Although you get good results with plain bond paper, you will get better results by using coated papers because they do not absorb as much ink.

To ensure the best possible quality, EPSON offers special coated papers, glossy papers, and transparencies that are formulated specifically for the inks used by the printer. You can order these products directly from EPSON Accessories at (800) 873-7766 (U.S. sales only). For more information about special papers and other media, see Chapter 1 of the *Reference Guide*.

Specially Formulated Ink

EPSON's black and color ink cartridges are specially formulated to work with EPSON papers and the driver to deliver the best looking images. Always use genuine EPSON ink cartridges and do not refill them. Other products may cause damage not covered by EPSON's warranties.

Make sure you use ink cartridges within six months of installing them and before the expiration date on the package.

Automatic Halftone Settings

The printer driver includes an automatic Method option that determines the correct halftone settings for you, as described in Chapter 2. When set, the driver analyzes the elements on a page to be printed and automatically adjusts the halftone settings so your printed results are appropriate for the image type.

Where to Get Help

If you purchased your printer in the United States or Canada, EPSON provides customer support and service through a network of Authorized EPSON Customer Care Centers. In the United States and Canada, EPSON also provides the following services when you dial (800) 922-8911:

- ☐ Technical information on the installation, configuration, and operation of EPSON products
- ☐ Assistance in locating your nearest Authorized EPSON Reseller or Customer Care Center
- ☐ Customer relations
- ☐ EPSON technical information library fax service
- ☐ Product literature on current and new products.

You can purchase ink cartridges, paper, parts, printed manuals, and accessories for EPSON products from EPSON Accessories at (800) 873-7766 (U.S. sales only). In Canada, call (800) BUY-EPSON.

If you purchased your printer outside the United States or Canada, contact your EPSON dealer or the marketing location nearest you for customer support and service.

If you need help with any software program you are using, see that program's documentation for technical support information.

Electronic Support Services

If you have a modem, the fastest way to access helpful tips, specifications, drivers, application notes, and bulletins for EPSON products is through the online services below.

EPSON Bulletin Board Service

You can call the EPSON Bulletin Board Service (BBS) at (310) 782-4531. No membership is required. Make sure your communications software is set to 8 data bits with 1 stop bit, no parity bit, and a modem speed up to 28.8 Kbps. See the documentation that came with your communications software for more information.

CompuServe Online Support

CompuServe® members can call the Epson America Forum on CompuServe. If you are already a member, simply type GO EPSON at the menu prompt to reach the Forum.

If you are not currently a member, you are eligible for a free introductory membership as an owner of an EPSON product. This membership entitles you to:

- ☐ An introductory credit on CompuServe
- ☐ Your own user ID and password
- ☐ A complimentary subscription to CompuServe Magazine, CompuServe's monthly publication.

To take advantage of this offer, call (800) 848-8199 in the United States and Canada and ask for representative #529. In other countries, call the following U.S. telephone number: (614) 529-1611, or your local CompuServe access number.

Important Safety Instructions

Before using your printer, read the following safety instructions to make sure you use it safely and effectively.

- ❑ Turn off and unplug the printer before cleaning. Clean with a damp cloth only. Do not spill liquid on the printer.
- ❑ Do not place the printer on an unstable surface or near a radiator or heat register.
- ❑ Do not block or cover the openings in the printer's cabinet or insert objects through the slots.
- ❑ Use only the type of power source indicated on the printer's label.
- ❑ Connect all equipment to properly grounded power outlets; do not use an adapter plug. Avoid using outlets on the same circuit as photocopiers or air control systems that regularly switch on and off.
- ❑ Do not let the power cord become damaged or frayed.
- ❑ If you use an extension cord with the printer, make sure the total ampere rating of the devices plugged into the extension cord does not exceed the cord's ampere rating. Also, make sure the total of all devices plugged into the wall outlet does not exceed 15 amperes.
- ❑ Except as specifically explained in the *Reference Guide*, do not attempt to service the printer yourself.
- ❑ Unplug the printer and refer servicing to qualified service personnel under the following conditions:

If the power cord or plug is damaged; if liquid has entered the printer; if the printer has been dropped or the cabinet damaged; if the printer does not operate normally or exhibits a distinct change in performance. Adjust only those controls that are covered by the operating instructions.

Setting Up the Printer

As you follow the instructions in this chapter to set up your printer, refer to the illustrations on the inside front cover to identify the printer's components.

System Requirements

To use your printer with a Macintosh, it is recommended that you have the following:

- ☐ Any Macintosh or Power Macintosh model except the Macintosh +, Macintosh 512, or Macintosh PowerBook™ 100
- ☐ System 7.1 or later
- ☐ At least 8MB of available system RAM
- ☐ A hard disk with at least 40MB of unused space to store and print color images. The amount of space you need depends on the number and size of your color images.

For a LocalTalk connection, you also need:

- ☐ LocalTalk interface board (model #C823121)
- ☐ Two LocalTalk Locking Connector Kits (DIN 8 version), one for your printer and one for your computer. If your Macintosh is already part of a network, you need only one connector kit.

For an Ethernet connection, you also need:

- ☐ An Ethernet interface board (model #C823312)
- ☐ A transceiver for your Macintosh (depending on your Macintosh)
- ☐ 10BASE2 thin coaxial cable with BNC connectors or 10BASE-T cable with RJ-45 connectors
- ☐ 50 ohm terminator (depending on your setup).

To purchase the LocalTalk or Ethernet board, contact your dealer or call EPSON Accessories at (800) 873-7766 (U.S. only). In Canada, call (800) BUY-EPSON for sales locations.

Choosing a Location

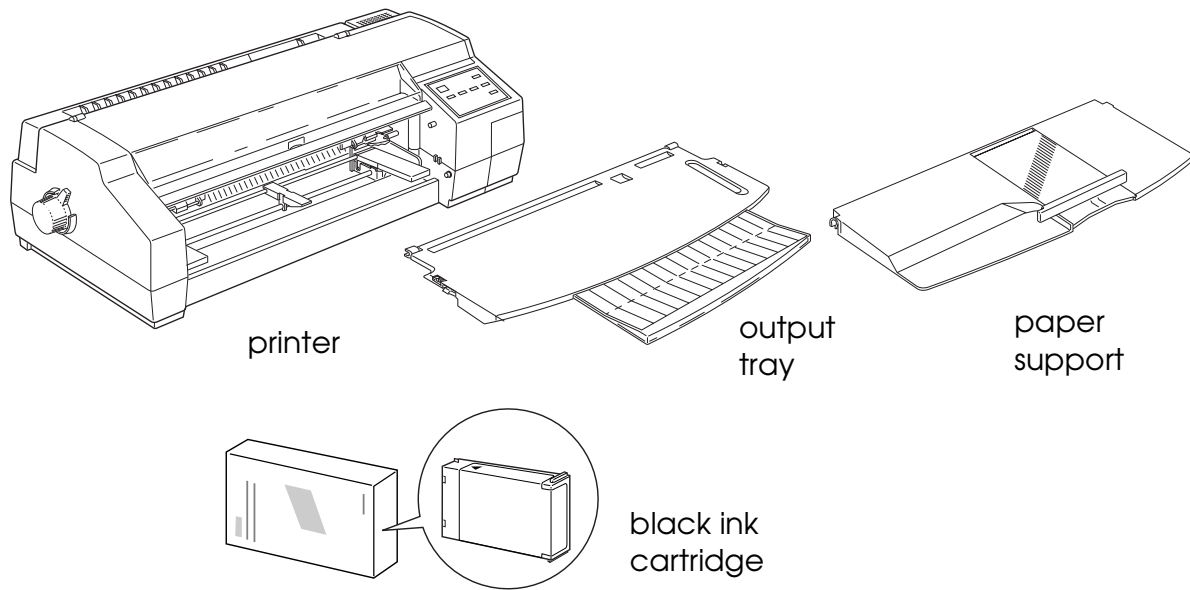
When choosing a location for the printer, use a surface that is flat, horizontal, and stable. If you are using a printer stand, it must support at least 50.7 pounds (23 kg).

Avoid locations subject to rapid changes in temperature and humidity. Also keep the printer away from direct sunlight, heat sources, and sources of electromagnetic interference, such as the base units of cordless telephones.

Always leave adequate space around the printer to accommodate its cables. Make sure nothing is pressing against the knob on the left side of the printer.

Unpacking the Printer

In addition to this guide, your printer box should include two EPSON printer driver diskettes, a *Reference Guide*, a *Setup and Software Guide for Windows*, a Notice Sheet, and these items:

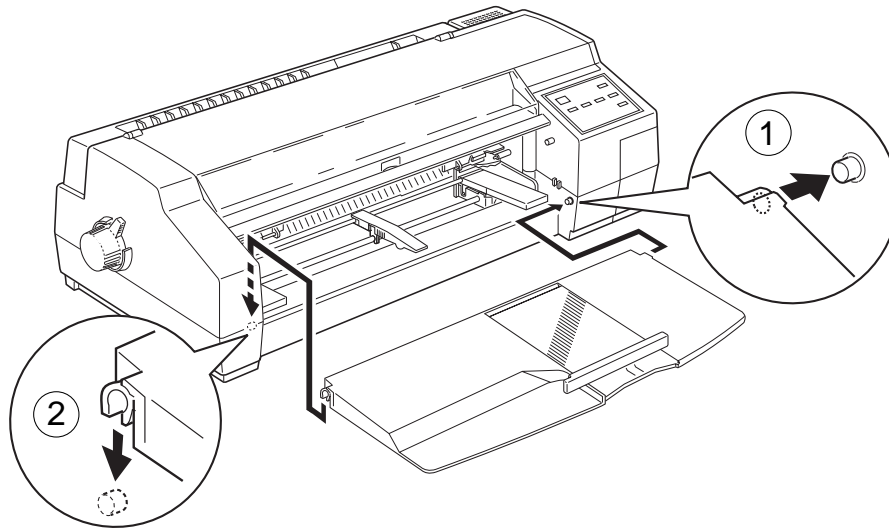


You must remove all protective materials packed around and inside your printer before you set it up and turn on the power. Follow the directions on the Notice Sheet (packed with the printer) to remove these materials.

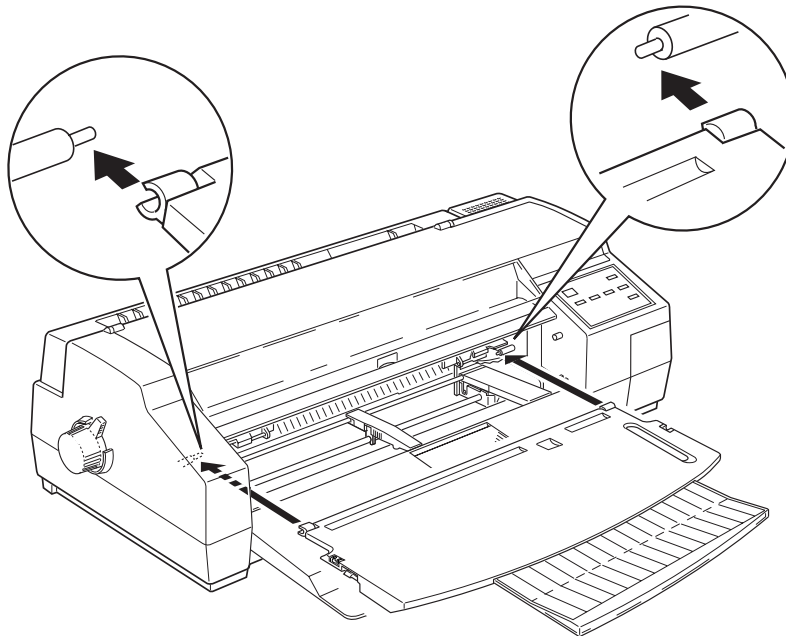
Save all packaging and protective materials in case you need to transport the printer in the future. It should always be transported in its original packaging or equivalent materials.

Attaching the Paper Support and Output Tray

1. Attach the paper support by placing the hole on the right side of the support over the right mounting post on the printer. Then push the notch on the left side onto the left mounting post.



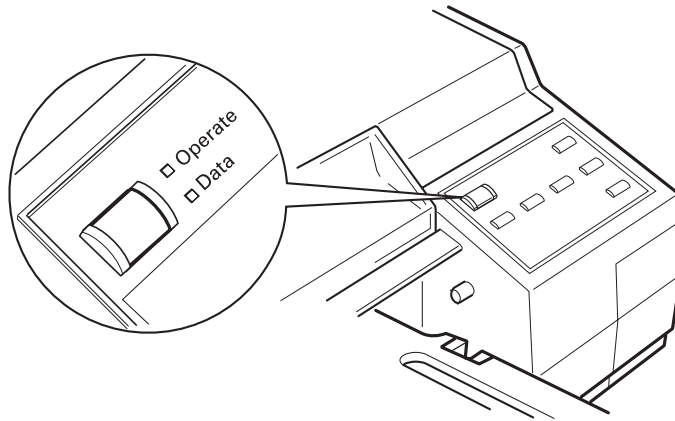
2. Attach the output tray by fitting the notches on the tray over the mounting posts, as shown below. Make sure the output tray is locked firmly in place.



Plugging In and Turning On the Printer

Follow these steps to plug in and turn on the printer:

1. Make sure you have removed all protective packing materials from inside the printer. (See page 1-3 for more information.)
2. Make sure the printer is turned off by checking the position of the Operate button. The printer is off when the surface of the button is even with the button protectors on each side.



- 3 Plug the power cord into a properly grounded electrical outlet.
- 4 Turn on the printer by pressing the Operate button. The Pause light flashes while the printer completes its power-on routine. During the power-on routine, the print head moves back and forth and the paper feed wheels turn.

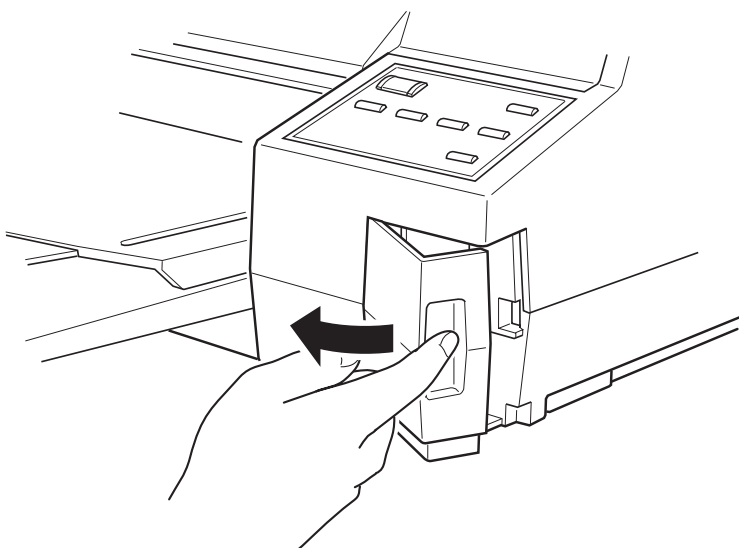
Installing the Black Ink Cartridge

Follow the steps in this section to install your printer's black ink cartridge.

Warning:
W *The ink cartridge is a self-contained unit. Under ordinary use, ink will not leak from a cartridge. If ink gets on your hands, wash them thoroughly with soap and water. If ink gets into your eyes, flush them immediately with water.*

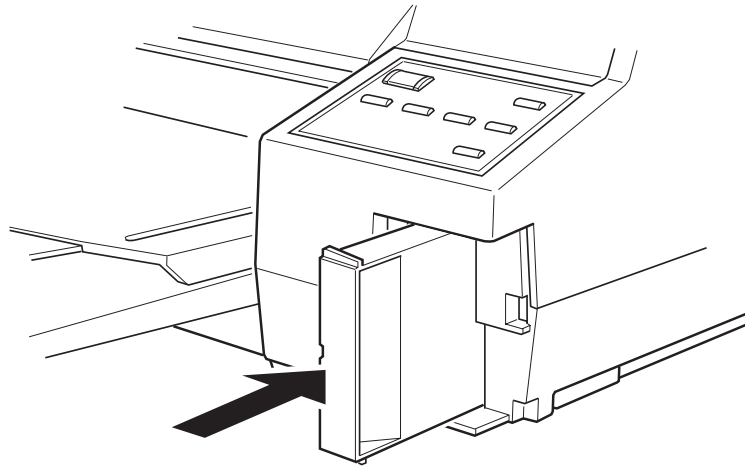
Caution:
C *Do not open the ink cartridge package until just before you install it or it may become too dry.*

1. Make sure the printer is turned on.
2. Remove the ink compartment cover as shown.



3. Remove the ink cartridge from its package.

4. Insert the end of the cartridge with the foil plug into the ink compartment following the instructions on the cartridge. Push the cartridge all the way into the compartment. You will feel some resistance.

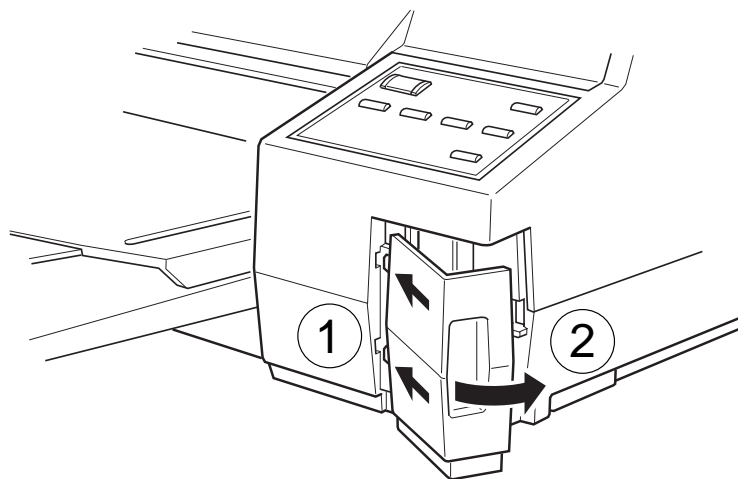


When the cartridge is correctly installed, the Ink Out o light goes off.

Note:

If the Ink Out o light remains on, the ink cartridge may not be installed correctly. Remove it and then reinsert it as described above.

5. Reattach the ink compartment cover as shown.



The first time you install the ink cartridge, the printer automatically charges the ink delivery system. This takes about two minutes.

C ***Caution:***
During the ink charging process, the Pause light flashes. Never turn off the printer while the Pause light is flashing. Also, never remove the ink cartridge while ink is being charged in the system.

When you need to replace ink cartridges, see Chapter 3 of the Reference Guide for instructions. Be sure to use only genuine EPSON ink cartridges and do not refill them. Other products may cause damage not covered by EPSON's warranty.

Installing the Optional Color Upgrade Kit

You can upgrade your printer to print in color by installing the optional Color Upgrade Kit (C832161). Contact your dealer or call EPSON Accessories at (800) 873-7766 (U.S. only). In Canada, call (800) BUY-EPSON for sales locations.

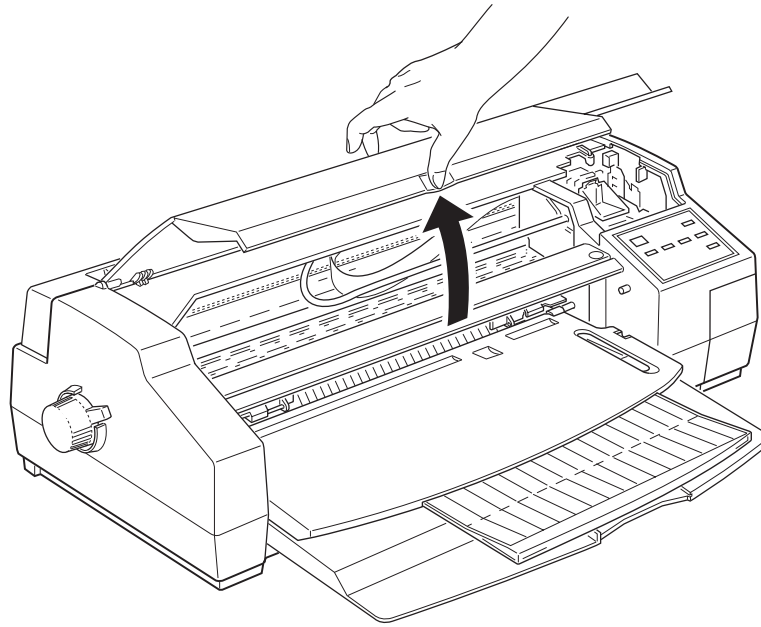
Install the color print head as described in this section and the color ink cartridge as described in the next section, then select color printing through the printer driver as described in Chapter 2.

C ***Caution:***
Once you install the color print head, you must leave it installed. Otherwise, it may become unusable.

Installing the Color Print Head

Follow these steps to install the color print head:

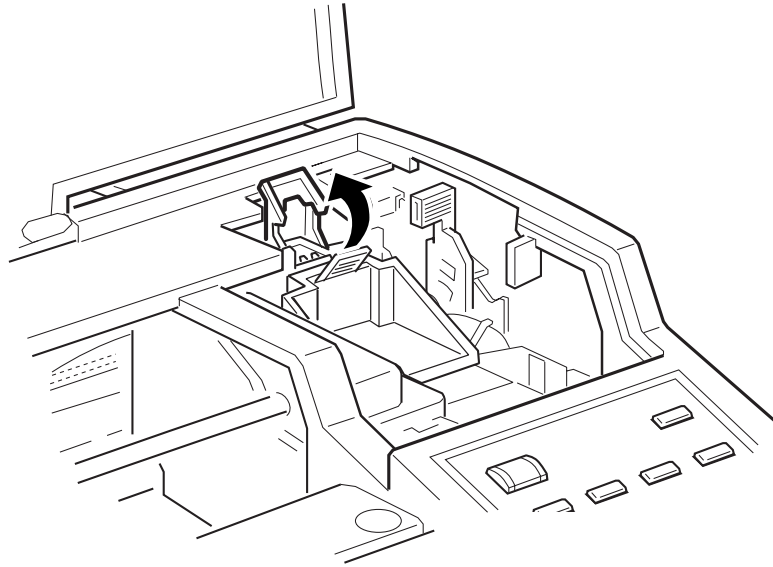
1. Make sure the printer is turned on and the Data light is off.
2. Open the printer cover using the notch in the middle of the cover.



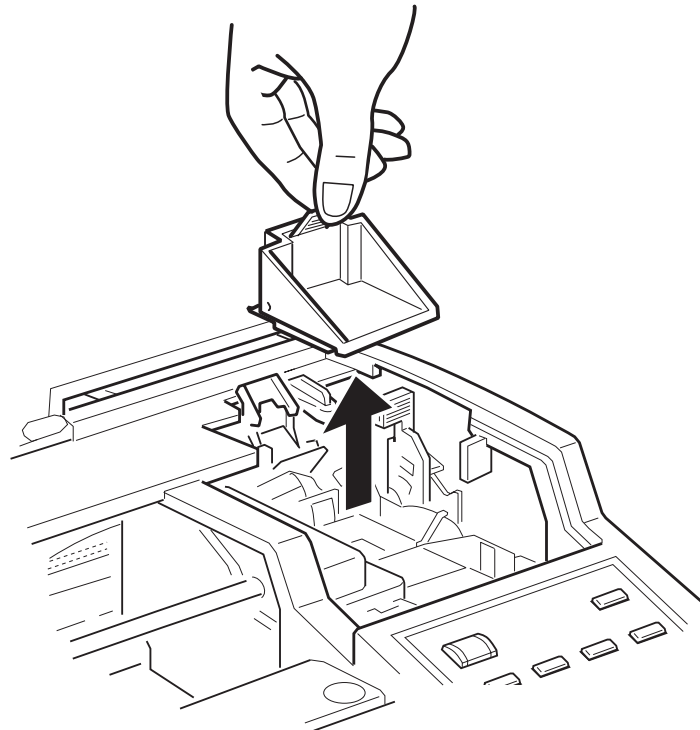
3. Press the Pause button to turn the Pause light on.
4. Hold down the Alt button for about five seconds until the print head unit moves slightly left, to the print head install position. The Pause light flashes.

C ***Caution:***
Do not move the print head unit by hand. Always use the Alt button to move it.

5. Raise the blue print head unit release lever as far as it will go.

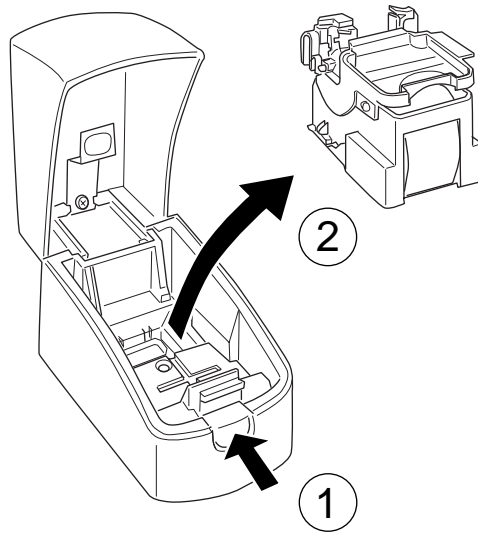


6. Remove the protective cover from the print head compartment.



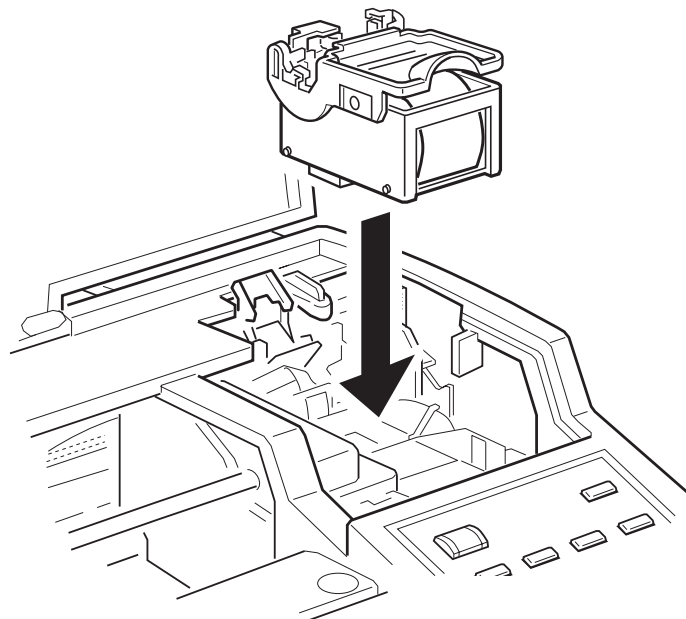
C **Caution:** Do not touch the carriage inside the printer; this may damage the printer.

7. Remove the print head unit from the storage box by pressing on the notch as shown.



Caution:
C Do not touch the print head or the electrical contacts on the back and bottom of the unit; otherwise, you may damage the print head.

8. Carefully insert the print head unit into the compartment, with the electrical contacts and print head facing the back of the printer.



9. Press down the blue print head unit release lever until it clicks into place.

Note:

Make sure that the Data and Paper Out lights are not flashing. If they are, remove the print head unit and reinsert it properly.

Caution:

C *Do not remove the color print head unit once you've installed it. Otherwise, the print head may become unusable.*

Now follow the steps in the next section to install the color ink cartridge.

Installing the Color Ink Cartridge

After you install the color print head, follow the steps below to install the color ink cartridge.

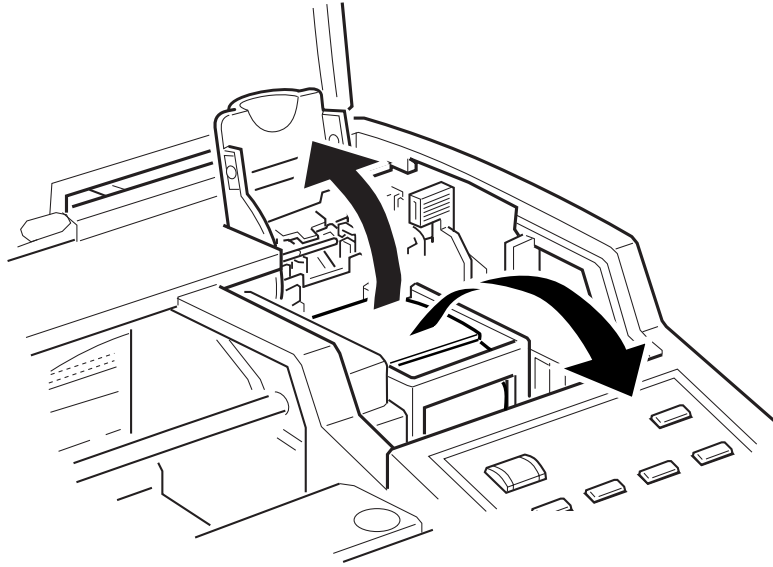
Warning:

W *The ink cartridge is a self-contained unit. Under ordinary use, ink will not leak from a cartridge. If ink does get on your hands, wash them thoroughly with soap and water. If ink gets into your eyes, flush them immediately with water.*

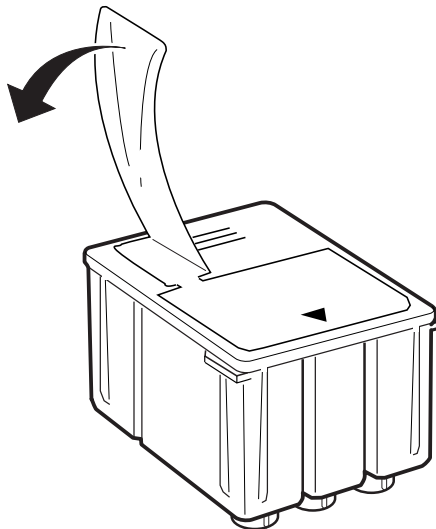
Caution:

C *Do not open the ink cartridge package until just before you install the cartridge, or the ink may dry up.*

1. Lift up the ink cartridge clamp. Then remove the protective sheet from the cartridge holder.

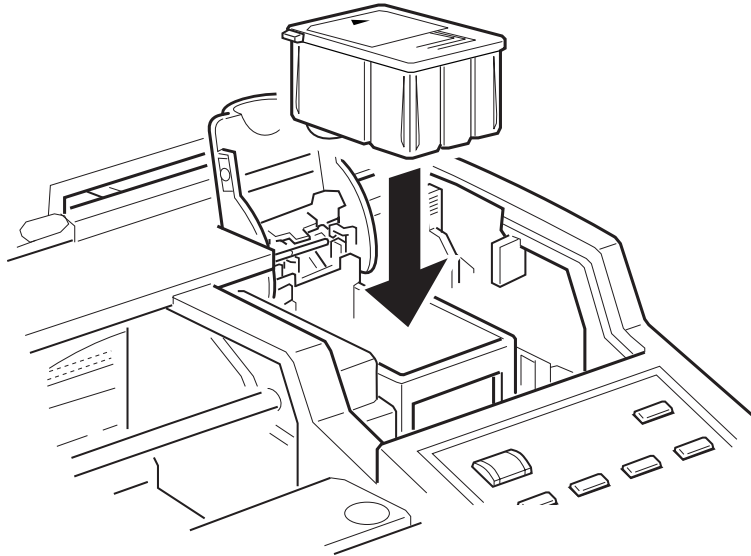


2. Open the ink cartridge package. Next, remove the tape seal from the top of the cartridge as shown.

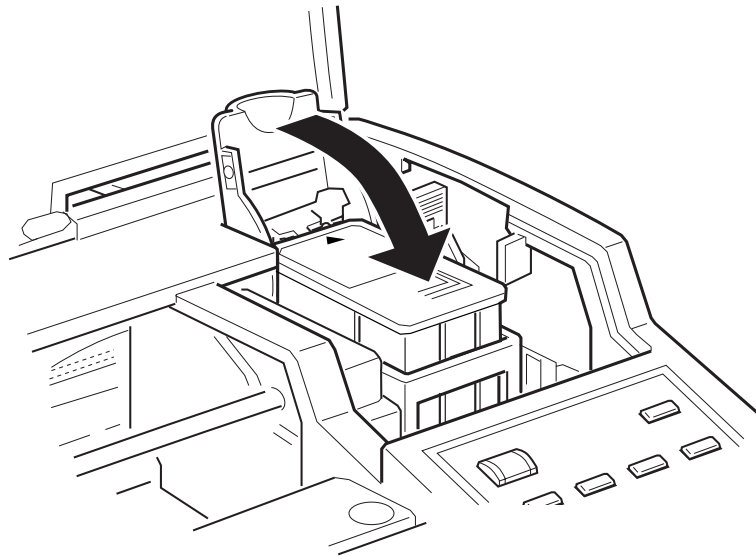


C **Caution:**
Do not remove the tape seal from the bottom of the cartridge; ink will leak out.

3. Lower the cartridge into the print head unit with the label face up and the arrow mark pointing to the rear. Do not push down on the ink cartridge.



4. Press the ink cartridge clamp down until it locks in place. You will feel some resistance.



Caution:

C Once you install the ink cartridge, do not open the clamp or remove the ink cartridge except to replace it with a new one. Otherwise, the cartridge and print head may become unusable.

5. Press the Alt button again to return the print head unit to its home (far right) position. (Even if you do not press Alt, the printer moves the print head unit back to its home position about 30 seconds after you install the cartridge.)

The first time you install the ink cartridge, the printer automatically charges the ink delivery system and returns the print head unit to its home position. This operation takes about two minutes to complete.

Caution:

C *During the ink charging process, the Pause light flashes. Never turn off the printer while this light is flashing.*

Note:

If you installed the color upgrade unit with data remaining in the printer, you must turn the printer off and back on to enable color printing. You will also have to resend your print data.

In order to maintain optimum print quality, the printer periodically performs a cleaning operation. You may notice the cleaning cycle being performed when the printer has been on for a while without being used or when you turn on the printer after it has been off for a while. If you need to initiate a cleaning cycle, see Chapter 3 of the *Reference Guide*.

If You Are New to Color Printing

Color printing with the EPSON Stylus 1500 produces amazing images, whether you print text, graphics, line drawings, photographs, or documents containing many different image types. However you use color, keep the following in mind:

- ❑ You need to leave a large amount of hard disk drive space free to make room for your color images. A full-page color photographic image, for example, may require from 10MB to 40MB of disk space, depending on the resolution, and sometimes more. To reduce the file size, you can decrease the size and resolution of your images using your printer driver and application software.
- ❑ Color printing takes time because of the complex processing required to reproduce a color image. How much time depends on the size and type of your image, the resolution you use, the speed of your computer, and the interface type. (Serial printing takes longer than parallel printing.)
- ❑ Your screen colors will not exactly match the printed colors because your monitor screen and the printer use different methods to produce the colors you see. And if you scan images using a scanner, the image goes through another interpretive process that also affects the color.

Monitors and scanners produce colors by combining red, green, and blue—the RGB method. Your monitor can produce up to 16 million colors by turning on and off the tiny red, green, and blue phosphors contained in each pixel on the screen. Colors produced this way differ from colors produced by your printer's cyan, magenta, yellow, and black ink—the CMYK method.

Your printer driver's Document Type settings help you closely match colors as appropriate for your image type, resolution, and paper.

If you need extreme precision in matching colors, you can use a color calibration system available with many software applications. If you use a scanner, make sure your scanning software is set to the correct setting for ink jet printers to help you match colors. Also, your application may include image editing capabilities that let you adjust the colors.

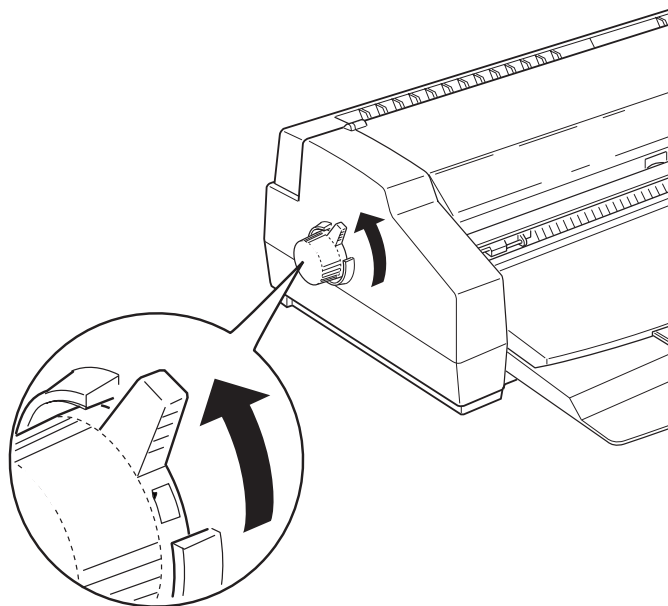
Loading Paper in the Sheet Feeder

The following procedure explains how to load plain bond paper in the sheet feeder. For instructions on loading coated or glossy paper, envelopes, and transparencies in the sheet feeder or labels and continuous paper in the tractor feeder, see Chapter 1 of the *Reference Guide*.

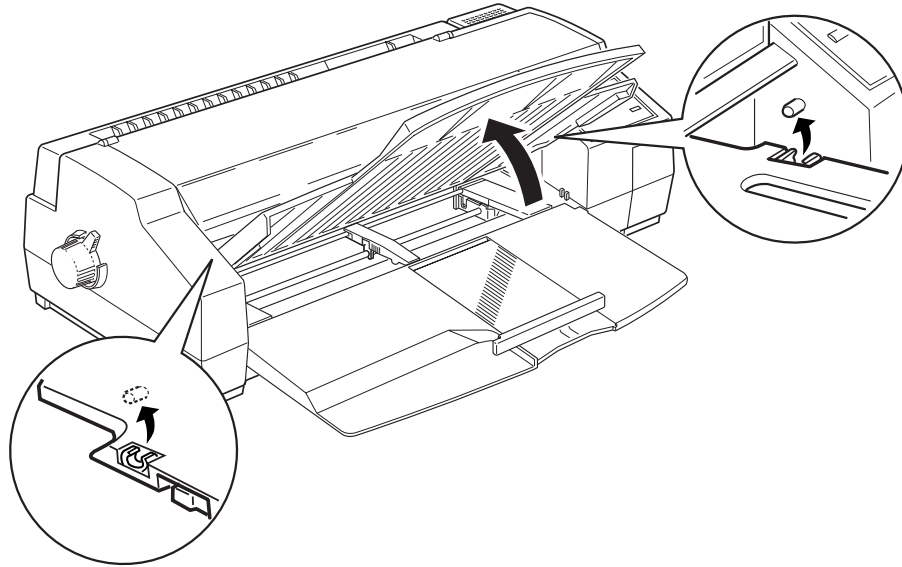
You can load up to 100 sheets of plain paper. For paper specifications, see Appendix B of the *Reference Guide*.

Always load plain paper with the printable surface facing down. The printable surface is marked with an arrow on most plain paper packaging.

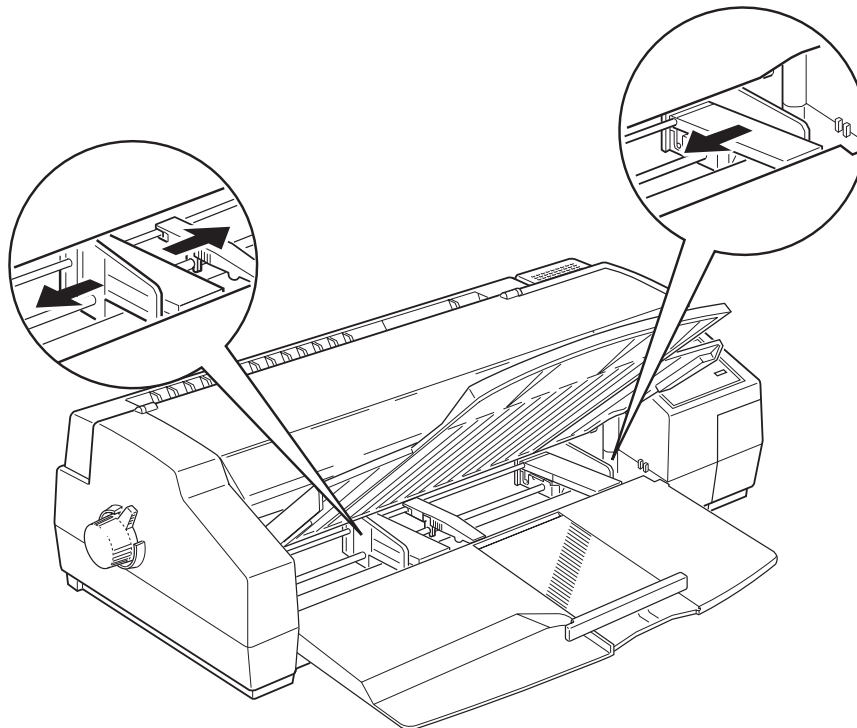
1. Make sure the paper-release lever is set to the single sheet position.



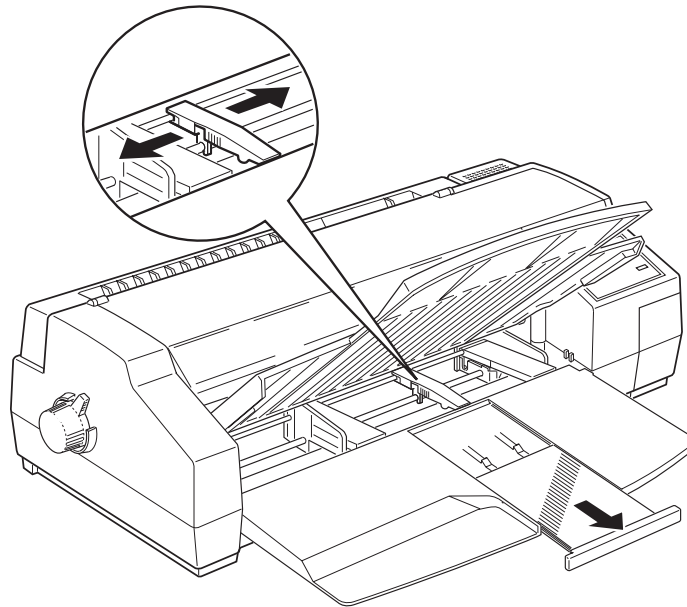
2. Raise the output tray until it locks in the upright position.



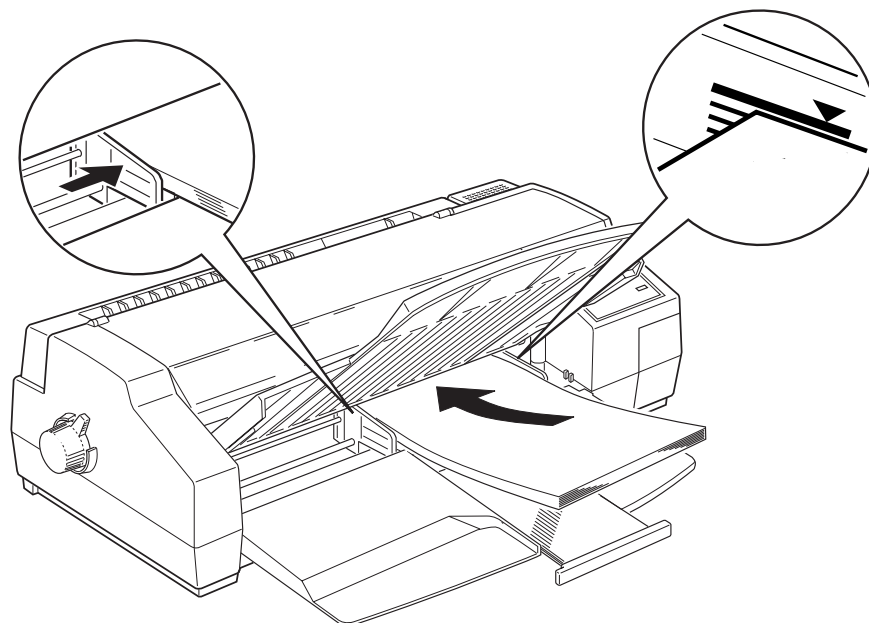
3. Slide the right edge guide to the left as far as it will go. Then slide the left edge guide to match the width of your paper.



4. Move the center support to a point midway between the edge guides. Then gently extend the rear edge guide until it stops.



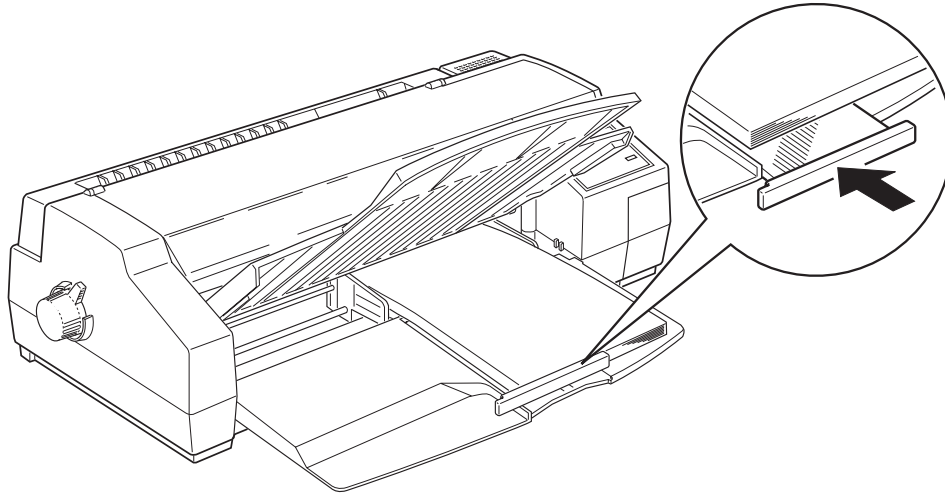
5. Fan a stack of paper; then tap it on a flat surface to even the edges.
6. Load the stack of paper, printable side down, all the way into the sheet feeder. Make sure the right edge of the stack is against the right edge guide. Next, slide the left edge guide against the left edge of the paper.



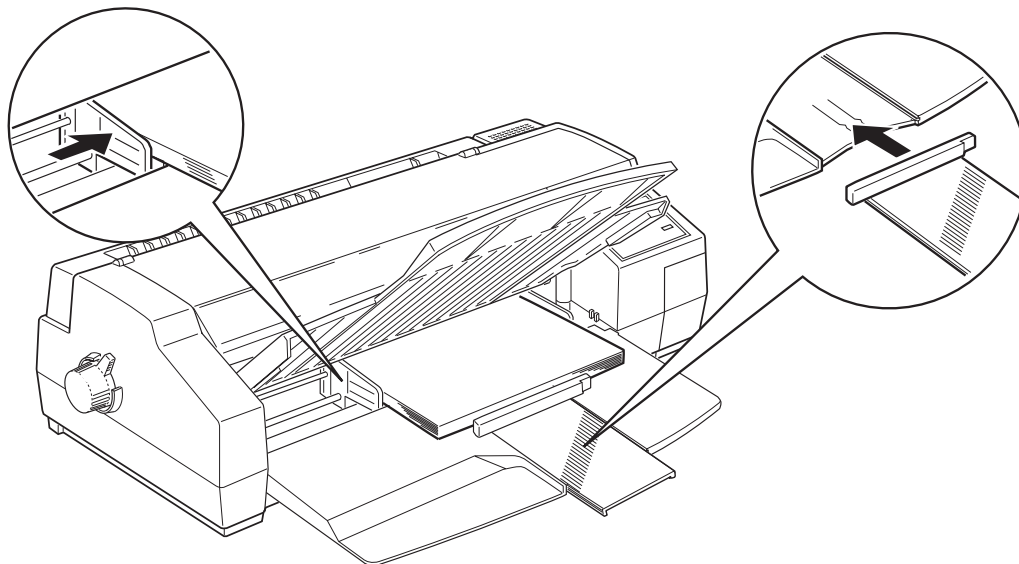
Note:

The sheet feeder can hold up to 100 sheets of 17-lb (64 g/m²) plain paper. Do not load paper above the arrow mark, which is located on the inside surface of the edge guide.

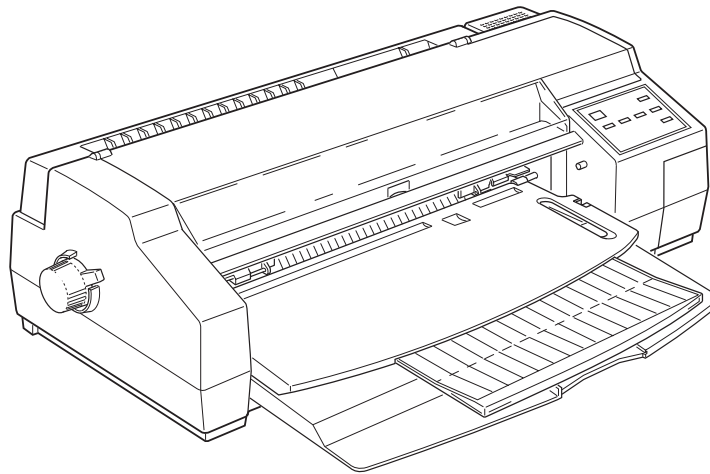
7. Adjust the rear edge guide to match the length of your paper.



When you load paper in the landscape direction (wider than it is tall), the rear edge guide may not match the length of your paper. In this case, remove the rear edge guide and re-insert it as shown.



8. Lower the output tray to the printing position. Make sure that the rear edge guide of the paper tray is positioned under the output tray. The rear edge guide must be under the output tray to allow room for the paper loaded in the sheet feeder and to prevent a paper jam.



Testing the Printer

Before continuing, test the printer to ensure it is functioning properly. For the self test, use paper that is at least 8.25 inches (210 mm) wide. If you load smaller paper, the print head will spray ink directly onto the platen, which could mar future printouts.

1. Press the Operate button to turn off the printer.

Caution:

C *Never turn off the printer by unplugging it or turning off a power strip. Always turn off the printer by pressing the Operate button.*

2. While holding down the Load/Eject button, press the Operate button to turn on the printer. Wait for the paper to load, then release the buttons.

The 360 dpi self test begins by printing in black ink on the first and last lines of the first sheet of paper to measure the page length.

Note:

If the self test does not begin, turn off the printer and repeat step 2. You may need to hold down the buttons a few seconds longer.

If you installed the optional Color Upgrade Kit, the self test prints in color. If you want to run the 180 dpi self test, turn on the printer while holding down the LF/FF button. The 180 dpi self test always prints in black, even when the Color Upgrade Kit has been installed.

3. To end the self test, press the Pause button. If there is paper in the paper path, press the Load/Eject button to eject it. Then turn off the printer. Otherwise, the test continues until the paper in the sheet feeder runs out.

Caution:



Do not turn off the printer before pressing the Pause button.

If the quality of the test output is not good, clean the print heads as described in Chapter 3 of the *Reference Guide*. Then run a demonstration page or another self test to check the print quality. You may need to repeat these procedures several times to fully solve the problem.

You may also need to calibrate your printer. After connecting the printer to your Macintosh and installing the printer driver as explained in the following sections, calibrate your printer using the calibration utility program that came with your printer. See Chapter 3 for instructions.

Installing the LocalTalk or Ethernet Board

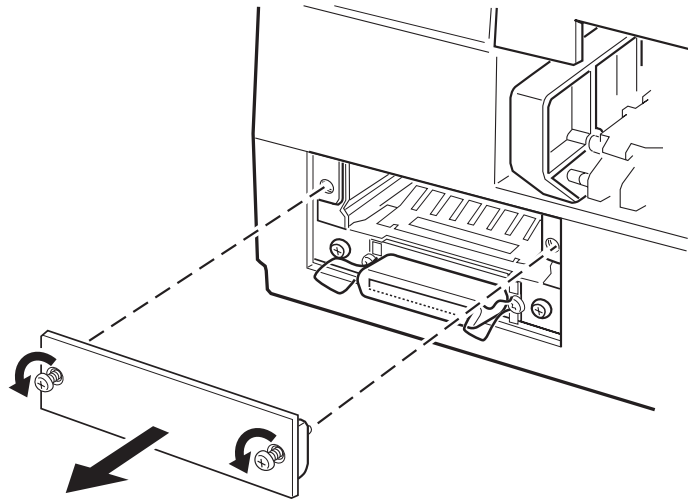
Follow the steps below to install a LocalTalk or Ethernet board:

1. Turn off the printer.
2. Unplug the printer's power cord from the electrical outlet.

Caution:

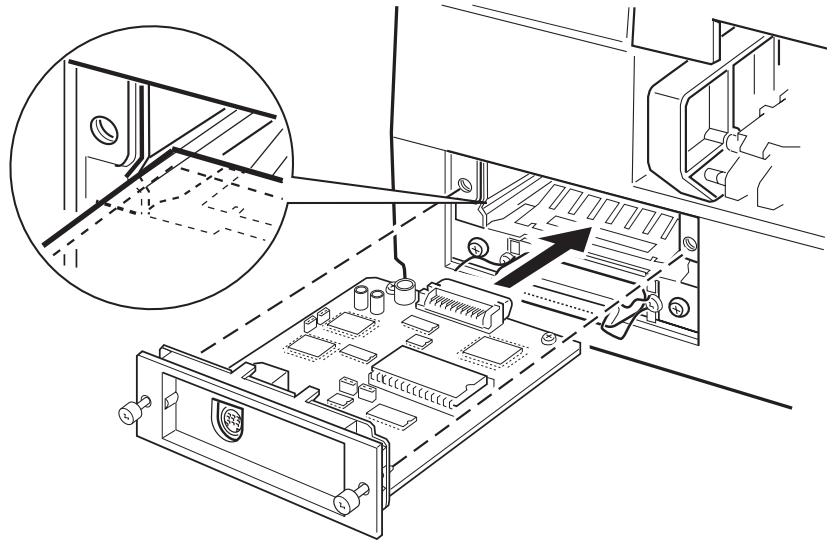
C *Do not install or remove an interface board when the printer is connected to the electrical outlet; this may damage your printer or computer.*

3. Remove the two screws securing the shield plate to the optional interface slot; then lift off the plate as shown below. Store the plate in case you later remove the interface board.



4. Be sure to set any switches and jumpers on the interface board. See the board's manual for details. If your interface board has a jumper labelled JG, make sure that you set it to on, or the board will not work properly.

5. Slide the interface board along the slots on both sides of the interface compartment. Push it in firmly to fully insert the connector at the rear of the interface board into the printer's internal socket.



6. Secure the interface board in the slot with the two screws included with the interface board.
7. See the next section for instructions on connecting the printer to your Macintosh.

Connecting the Printer to Your Macintosh

LocalTalk Connection

If you installed a LocalTalk interface board in your printer, follow these steps to connect it to your computer:

1. Make sure both the printer and computer are turned off.
2. Attach a LocalTalk locking connector box to the LocalTalk connector on the back of the printer.
3. Attach another LocalTalk locking connector box to your Macintosh.

4. Attach one end of a LocalTalk cable to the connector box on the printer and the other end of the cable to the connector box on your Macintosh.

Note:

If you are connecting to a LocalTalk network, you may attach the other end of the cable to any available port on any connector box that is part of the network.

5. Make sure the printer's network interface mode is on. See page 1-26 for instructions.

For more information about creating a LocalTalk network, see the guide that comes with the LocalTalk Locking Connector Kit.

Ethernet Connection

If you installed an Ethernet board in your printer, follow these steps:

1. Make sure both the printer and computer are turned off. For 10BASE2 coaxial connections, continue with step 2. For 10BASE-T connections, skip to step 4.
2. Attach the T-connector supplied with the board to the 10BASE2 connector on the board.
3. Connect the coaxial cable to one node of the T-connector. If you are not connecting any other devices, or the printer is the last device in a daisy chain, attach a 50-ohm terminator to the other node of the T-connector. If the printer is not the last device in a daisy chain, connect another network cable to the other node of the T-connector.
4. Connect one end of the 10BASE-T cable to the interface board.
5. Connect the other end of the cable to a transceiver.

6. Attach the transceiver to your Macintosh.
7. Make sure the printer's network interface mode is on. See the next section for instructions.

For more information about creating an Ethernet network, see the guide that comes with the Ethernet board Kit.

Turning On the Printer's Network Interface Mode

If you encounter problems when using the printer on a network, you may need to turn on the printer's network interface mode using the buttons on the control panel. Follow these steps:

1. Make sure the printer is off and paper is loaded in the paper tray.
2. While holding down the Economy/Condensed button, turn on the printer. After the printer warms up, it prints a page listing the available control panel languages.
3. Unless you want to change the language of the control panel, press the Pause button. (Press the Alt button to change the control panel language.)

The printer prints two instruction sheets that describe how to change default printer settings.

4. Press the Alt button until the Ink Out 0 light is flashing, the Ink Out NNN light is off, and the Paper Out light is on.
5. Press the Pause button until the Pause light is on and the Economy and Condensed lights are off.
6. Turn off the printer.

See Chapter 2 for instructions on installing and using the printer driver.

Installing and Using the Printer Driver

This chapter describes how to install the Macintosh driver and use it to control printer settings such as resolution, media type, and halftoning.

Installing the Macintosh Printer Driver

A printer driver is software that allows your computer to control the printer. You must install the printer driver on the Macintosh driver diskette that came with your printer to use the printer.

Also included on the diskette are the Epson Monitor2 Utility and the Bi-D Calibration Utility that you can install along with the driver. See Chapter 3 for instructions on running these programs.

Note:

It is a good idea to make a backup copy of your driver diskette.

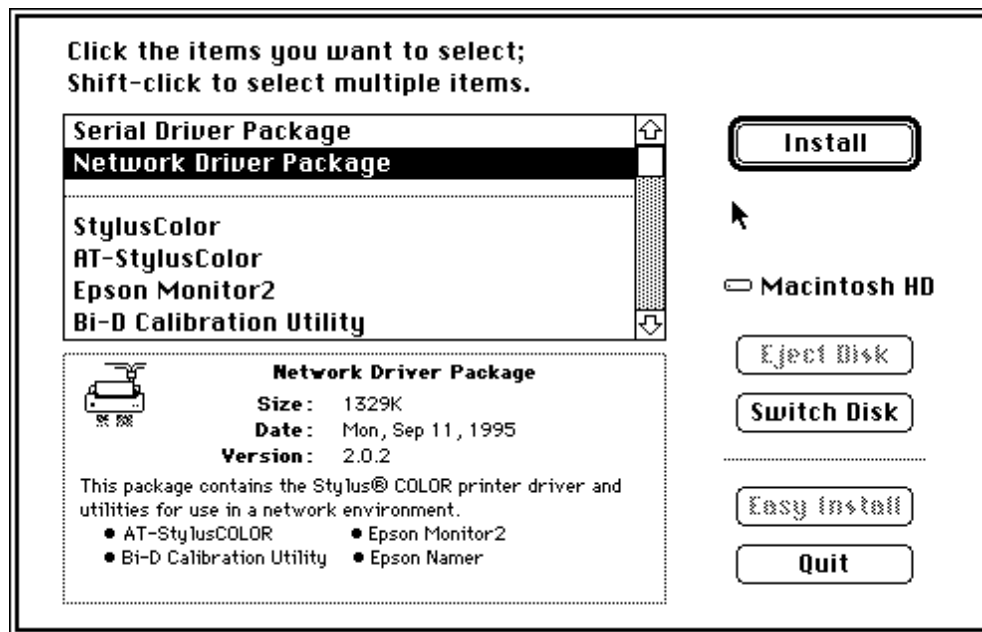
Follow the steps below to install the Macintosh driver and other utilities.

Caution:

C *Turn off all virus protection programs before you install the printer software. You do this by holding down the Shift key while you restart your Macintosh. You must hold down the Shift key until the Welcome to Macintosh screen appears. After installation, you can restart the computer without pressing Shift to use the virus protection programs.*

1. Turn on your printer and your Macintosh.
2. Insert the EPSON Macintosh driver diskette into a diskette drive.

3. If necessary, double-click the Driver Disk icon to open the Driver Disk window.
4. Double-click the README1st icon in the Driver Disk window to read the latest information on your printer and its driver. After you install the driver, you can click the README1st icon on your screen to read the file.
5. Double-click the Installer icon to install the driver.
6. When you see the initial screen, click OK to continue. You see the following screen:



7. You can install the Network Driver Package containing the driver and three utilities or you can select the components individually. To install the package, click Network Driver Package.

You do not have to install the utilities. However, you must install the AT-StylusColor driver. If you do not install the utilities and you need to use them later, you must run the installer again.

Note:

Do not select the Serial Driver Package or the StylusColor driver.

The driver and its utilities are described below.

- ❑ AT-StylusColor driver. This driver lets you use the optional AppleTalk interface to connect the printer to an AppleTalk network.
- ❑ Epson Monitor2. This utility manages print jobs that have been sent to the printer. Background printing must be on to use the Epson Monitor2 Utility; see Chapter 3 for more information.
- ❑ Bi-D Calibration Utility. This utility calibrates the printer so vertical lines are aligned; see Chapter 3 for more information.
- ❑ EPSON Namer. This utility assigns a unique name to the printer.

Note:

Do not select the Serial Driver Package or the StylusColor driver.

8. Click Install to copy the software to your hard disk, and follow any instructions on the screen.
9. When the installation is complete, click Restart to eject the driver diskette and restart the computer.

The Installer places the Bi-D Calibration Utility in a new folder called Stylus 1500 Folder, the Epson Monitor2 Utility in the Extensions folder, and the EPSON Namer on your hard drive. Now follow the instructions in the next sections to assign a name to the printer and select the printer using the Chooser.

Assigning a Name to the Printer

After you install the AT-StylusColor driver, you need to assign a name to the printer using the EPSON Namer Utility. Use the following procedure to assign a name.

Note:

AppleTalk must be active.

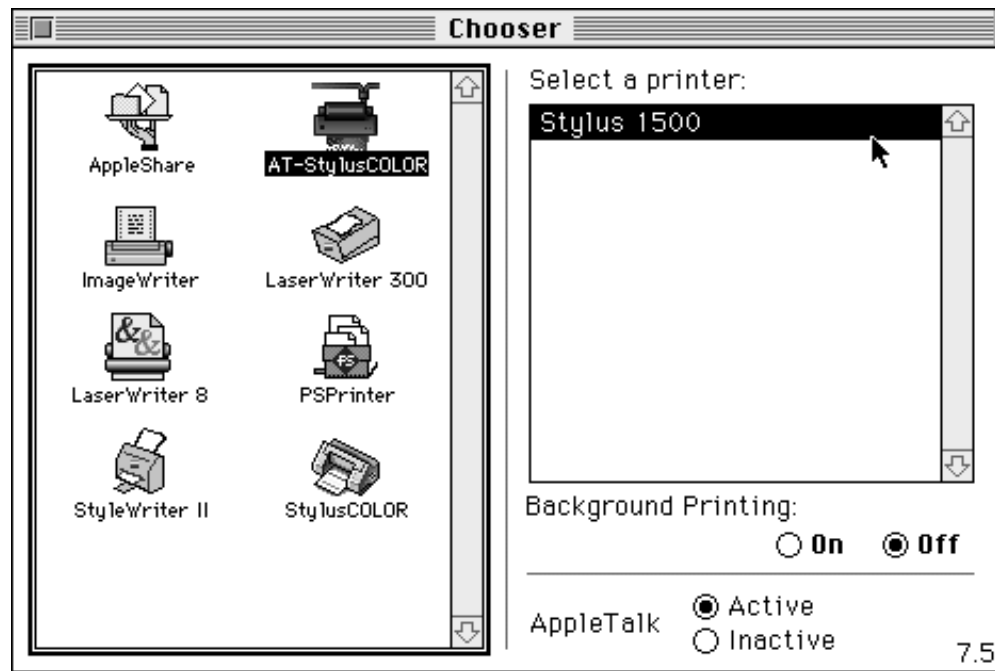
1. Double-click the EPSON Namer icon. The EPSON Namer Utility will be located on your hard drive if you installed it.
2. Click the AT-StylusColor icon in the Device Types window.
3. If there are multiple AppleTalk zones at your site, select the zone in which the printer is located.
4. Under Select Printer, click the printer you want to rename.
5. Under New Name, enter a name for your printer. You should assign a name that clearly distinguishes your printer from others on the network.
6. Click Rename. The new name for your printer is listed under Select Printer.
7. Click Done to exit EPSON Namer.

Using the Chooser to Select the Printer

After you install the printer driver, follow the steps below to select the printer before you begin printing. You need to choose the printer only the first time you use it or whenever you want to use another printer. (Your Macintosh always prints using the last printer selected.)

Follow these steps to choose the printer:

1. Open the Chooser under the Apple menu. You see the Chooser window:



2. Click the AT-StylusColor icon. The Stylus 1500 printer name you used in the previous section should appear.
3. Select the Stylus 1500 printer.
4. If you wish to confirm your printer selection, double-click the printer name. Otherwise, skip to step 6.
5. You see a dialog box confirming your Stylus 1500. Click Confirm to exit the dialog box.
6. If you wish, turn on background printing by clicking the button so you can print in the background while using your Macintosh for other tasks. (You must turn on background printing to use the Epson Monitor2 Utility to manage print jobs, as described in Chapter 3.)

Note:

Background printing slows the print speed and may also slow down any software program you use while printing in the background.

7. Click the AppleTalk Active button.
8. Close the Chooser. You see a reminder message to change the printer in your applications.
9. Click OK.

Now you can access the driver as described in the next section.

Using the Macintosh Printer Driver

The Macintosh printer driver contains settings that allow you to control your print job. The printer comes with default values for all the settings, as listed in the table on page 2-8. Change the printer driver settings only if you want to use values different from the default ones.

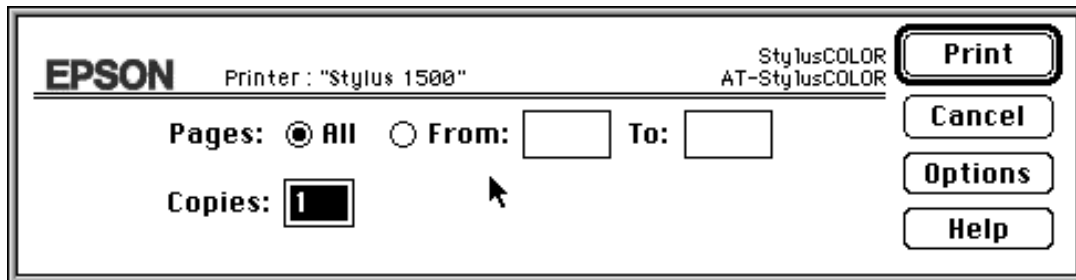
The driver includes an Automatic option (default) for the Method setting. This option lets the printer driver analyze each page of the document you will print and then select the appropriate halftoning settings automatically.

Accessing the Driver

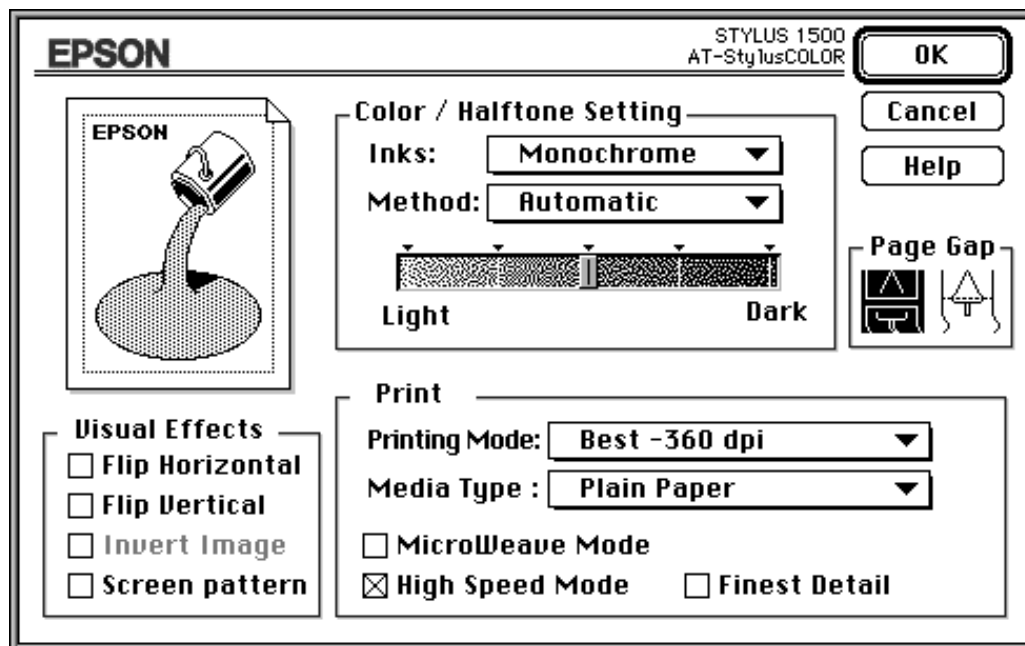
You can access the printer driver settings from two dialog boxes within your application: Print and Page Setup. Most settings are available from the Print dialog box; however, to change the paper size or orientation, use the Page Setup dialog box as described on page 2-14.

The driver settings are saved when you save your image or document. However, each time you close an application and open a new one, the default settings are in effect.

To bring up the Print dialog box, choose Print from the file menu of your application program. You see a dialog box similar to the one shown below.



To access the printer driver settings, choose the Options button. You see the following dialog box:



If you do not see this dialog box, the driver has not been installed correctly. See page 2-1 for instructions on installing the driver.

The table below summarizes the printer driver settings.
(Factory defaults are in bold type.) Detailed descriptions of each setting follow the table.

Box title	Setting	Options
Color/Halftone Setting	Inks	Color(CMYK) Color (CMY) Monochrome
	Method	No halftoning Dithering A Dithering B Error Diffusion Automatic
	Light/Dark slider	Light – Medium – Dark
Print	Printing Mode	Super - 720 dpi Best - 360 dpi Draft - 180 dpi
	Media Type	Plain Paper Transparency Coated Paper - 360 dpi, Coated Paper - 720 dpi HQ Glossy Paper
	MicroWeave Mode	On, off
	High Speed Mode	On , off
	Finest Detail	On, off
Visual Effects	Flip Horizontal	On, off
	Flip Vertical	On, off
	Invert Image	On, off
	Screen pattern	On , off

Color/Halftone Setting

The following settings control the ink the printer uses and the halftone method.

Inks

Specifies color (CMYK or CMY) or monochrome printing. Select Color (CMYK) or Color (CMY) only if you have installed the optional Color Upgrade Kit and your document includes color. CMYK and CMY refers to the printer's colored inks: cyan (blue-green), magenta, yellow, and black (K). These colors are combined to create any of 16 million colors. When you select Monochrome, the printer prints only black ink. If you are printing a color image and Monochrome is selected, the printer converts color data to grayscale values. When you want to print in color, select Color (CMYK). If you notice that the black portions of your printed image look inconsistent on the page, select Color (CMY) as the color setting.

Note:

If you select color printing and print a black and white image, the printer uses a composite black created from the color inks. For true black, select Monochrome.

If you select Color (CMY), only Plain paper is available as the media type.

Method

Select Automatic halftone setting, No Halftoning, or one of three halftone methods.

For the best results, select Automatic so your printer driver can analyze the data on each page of your document and adjust the halftone settings automatically. If you prefer to set the halftone method manually, follow these guidelines:

- ☐ Use No Halftoning to speed printing for text or monochrome line art. Do not use it when printing in color.
- ☐ Dithering A and Dithering B arrange dots in orderly patterns. Printing dithered images is relatively fast and is best suited for printing charts, graphs, and other images that require precise, solid areas of bright colors. Use Dithering A for images with limited detail and shading. Select Dithering B for images with significant detail but limited shading.
- ☐ Error Diffusion is best for photographic images. It creates colors by randomly distributing dots, making edges and colors softer. Printing these images takes longer, but it produces the best print quality for photographs.



Light/Dark slider

Controls how much ink is applied to the paper. The slider has five settings that allow you to apply more or less ink. The more ink, the darker the colors. Move the slider to the right for more ink and darker colors; slide it to the left for less ink and lighter colors. (Increasing the amount of ink means it takes longer for the ink to dry.)

Note:

The slider is not accessible if Monochrome ink is selected.

Page Gap

Controls whether pages are ejected as they print. To eject a page as it is printed, turn Page Gap on by clicking . To print on banner paper, click  to turn Page Gap off.

Note:

To change the Page Gap setting, enter the Option dialog box from the Page Setup dialog box. You cannot change the Page Gap setting if you opened the Option dialog box from the Print dialog box.

Print Settings

The following settings control the resolution, media type, and print options.

Printing Mode

Specifies the resolution to be 720 dpi, 360 dpi, or 180 dpi. Resolution is the amount of detail used to create an image. The higher the resolution, the sharper and finer the image.

For the best possible resolution, choose Super - 720 dpi. When you select this resolution, MicroWeave is automatically turned on and High Speed mode is turned off. For best results at 720 dpi, load EPSON special coated paper for 720 dpi or high-quality glossy paper.

For most color printing, select Best - 360 dpi. This resolution produces good-quality, full-color images using less memory and in less time than 720 dpi. For best results at 360 dpi, use EPSON special coated paper for 360 dpi.

When speed is important and draft quality is good enough, use Draft - 180 dpi resolution.

Note:

Printing at lower resolutions also conserves ink.

Media Type

Sets up the printer for the type of paper you loaded.
Depending on your Printing Mode setting, Media Type can be one of the following:

- Plain Paper
- Transparency
- Coated Paper - 360 dpi
- Coated Paper - 720 dpi
- HQ Glossy Paper

Note:

You may not see all paper types listed because some are not available for all resolutions. Be sure to select the Printing Mode before selecting the Media Type.

You can use most plain paper with your printer and achieve good results. Coated papers give you better results because they reduce the amount of ink that is absorbed. However, if the coated paper does not absorb enough ink, the ink can smear.

To ensure the best results, EPSON provides special papers and transparencies that are formulated for the inks used in EPSON ink jet printers. These papers include the following:

- ☐ **EPSON special coated paper for 360 dpi.** Use this paper for best results when printing at 360 dpi.
- ☐ **EPSON special coated paper for 720 dpi.** Use this paper for best results when printing at 720 dpi.
- ☐ **EPSON high-quality glossy paper.** Use this paper with 720 dpi to produce camera-ready composites. When printing on glossy paper, use only EPSON high-quality glossy paper.
- ☐ **EPSON transparency film.** When printing transparencies, use only EPSON transparencies. For best results, use transparencies within six months of opening the package. Do not use 720 dpi when printing transparencies.

To order EPSON papers and transparencies, contact your dealer or call EPSON Accessories at (800) 873-7766 (U.S. only). In Canada, call (800) BUY-EPSON for sales locations.

MicroWeave Mode

MicroWeave reduces the possibility of banding, the light horizontal lines that can mar an image. When you turn on MicroWeave, the printer produces superior output because graphics data is reordered and printed in fine increments. It slows the print speed but is recommended for printing color and grayscale images. Because it does not improve the print quality for text and line art, turn it off to print these kinds of images faster.

High Speed Mode

When you turn on High Speed mode, the printer uses bidirectional printing, reducing the time it takes to print an image. Bidirectional printing is fast, but for highest quality, always turn off High Speed mode.

Note:

If the vertical lines appear misaligned when you print using High Speed mode, calibrate the printer as described in Chapter 3.

Finest Detail

When you select the Super - 720 dpi resolution, you can turn on Finest Detail mode to print text, solid graphics, and line art with very sharp edges. It may take considerably longer to print using this mode and it will increase your Macintosh memory requirements. Additionally, you may not be able to print some larger images and some patterns may not print correctly. When you select Finest Detail, make sure that Super - 720 dpi is the selected resolution. If you experience problems printing in this mode, turn it off or add more memory.

Visual Effects Settings

The following settings allow you to manipulate the printed image to achieve special effects.

Flip Horizontal and Flip Vertical rotate the image 180° along the horizontal or vertical axis. Text then appears backwards or upside down.

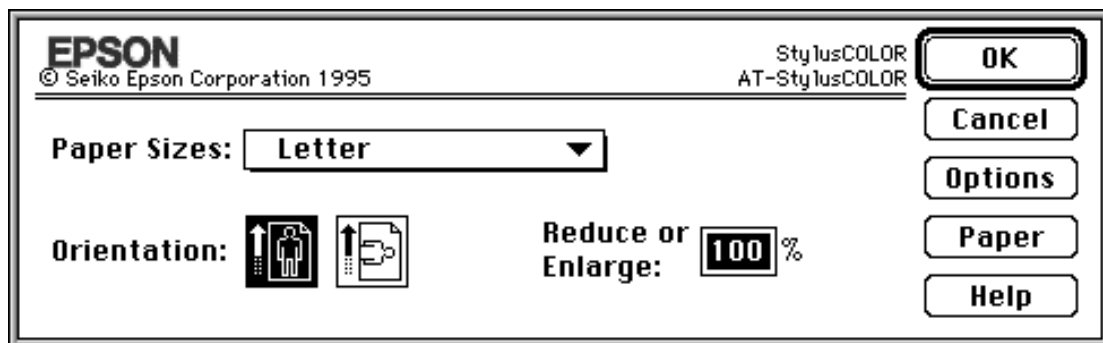
Invert Image changes black areas to white and white areas to black. This option is available only when you select Monochrome ink and No Halftoning.

Screen pattern determines how shaded patterns are printed. When Screen pattern is on, the printer prints shaded areas as they appear on your computer screen. If you turn it off (default), shaded patterns are converted to halftones. Normally you should turn off Screen pattern when printing.

Selecting Paper Size and Orientation Using Page Setup

By default, the printer expects letter-size (8.5 × 11 inches) paper. To select a different paper size, choose Page Setup in the File menu of your application program.

You see a dialog box similar to the following:



You can select one of the following predefined paper sizes or define a custom size as described in the next section.

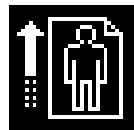
A4 210 × 297 mm	A6 Index card 105 × 148 mm
A4 (Centered) 210 × 297 mm	US B 11 × 17 in
A4 (Landscape) 297 × 210 mm	US C 17 × 22 in
Letter 8½ × 11 in	B5 176 × 250 mm
Letter (Centered) 8½ × 11 in	B4 250 × 353 mm
Letter (Landscape) 11 × 8½ in	A3 297 × 420 mm
Legal 8½ × 14 in	Super A3/B 329 × 483 mm
Legal (Centered) 8½ × 14 in	A2 420 × 594 mm
Envelope #10 4¼ × 9½ in	Fanfold 10 × 11 in
Envelope DL 110 × 220 mm	Fanfold 15 × 11 in
Envelope C5 162 × 229 mm	Custom paper
Statement 5½ × 8½ in	3.9 to 17 × 3.9 to 44 in
Executive 7½ × 10 in	

Note:

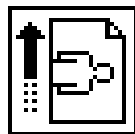
You can load paper up to 17 inches (432 mm) wide; however, the maximum printed width is 13.6 inches (345 mm).

Use one of the Centered paper sizes only if you have problems centering the image on the page and your software program does not have a setting that lets you do this. Centered images have a slightly smaller printable area.

Select the orientation of the image on the page by clicking one of the following buttons:



Portrait



Landscape

In portrait orientation, the top of the page is parallel with the short edge of the paper. In landscape orientation, the top of the page is parallel with the long edge of the paper.

Note:

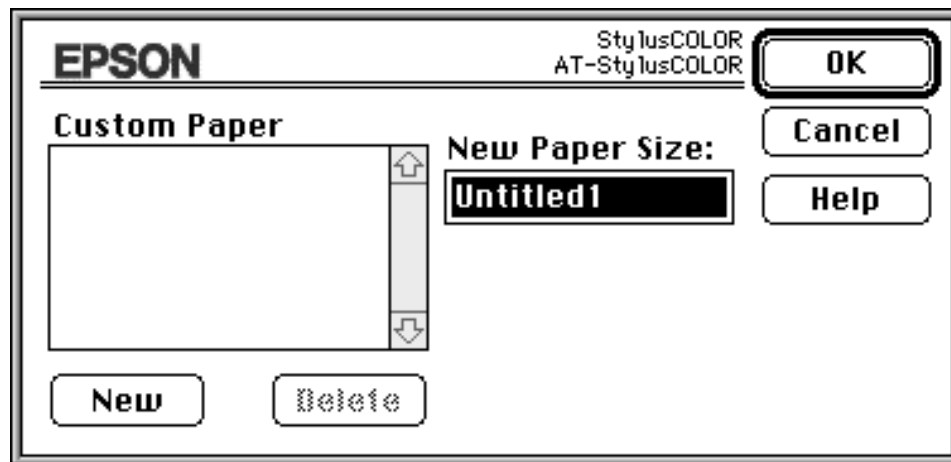
Print speed varies depending on the orientation setting in the driver. It is best to select the image orientation using your application, not the driver.

To reduce or enlarge the image, click the Reduce or Enlarge box and enter a percentage.

Defining custom paper sizes

To define a custom paper size, click the Paper button on the Page Setup dialog box.

You see the following dialog box:



Click New. This creates a new paper size based on the currently selected one. Enter a new name for the paper size in the New Paper Size box. Then enter the correct values in the Width and Height boxes. (The paper size can range from 3.9 to 17 × 3.9 to 44 inches, but the maximum printed width is 13.6 inches.) Click Inches or cm (centimeters) to change the measurement units, if necessary. Click OK to save the new paper size and return to the Page Setup dialog box.

Using the Printer Driver Utilities

This chapter explains managing print jobs that you send to the printer with the Epson Monitor2 Utility. It also tells you how to calibrate the printer using the Bi-D Calibration Utility if vertical lines in your printed output become misaligned.

If you selected the Network Driver Package option when you installed the driver, both of these utilities were copied to your hard disk. If you did not select the Network Driver Package option, you can install these utilities from the Macintosh printer driver diskette using the Installer program. See page 2-1 for instructions.

Managing Print Jobs on the Macintosh

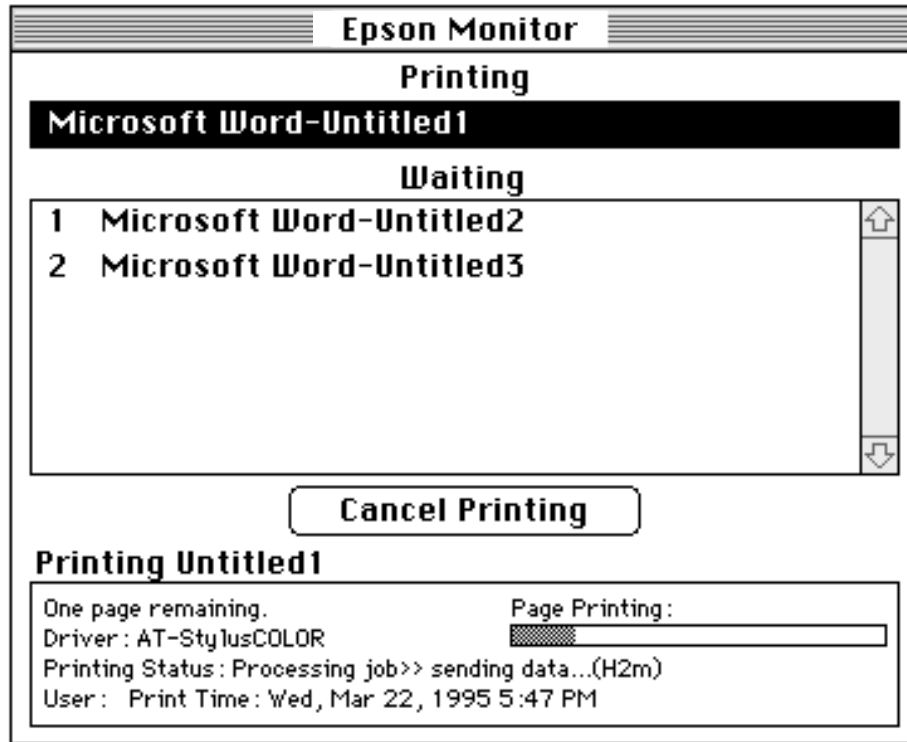
You can use the Epson Monitor2 Utility to check on the status of print jobs that are queued for printing. The utility also allows you to cancel any print job in the queue.

You can access the Epson Monitor2 utility by double-clicking the Epson Monitor2 icon. If you would like the utility to appear each time you print, follow the steps below:

1. Before using Epson Monitor2, you must first select background printing using the Chooser (if you have not done so already). See “Using the Chooser to Select the Printer” in Chapter 2 for instructions.
2. Double-click the Epson Monitor2 icon. (It was automatically installed in the Extensions folder if you installed it.)
3. In the menu bar, click File.
4. Select Preferences. The Show Epson Monitor When Printing option appears.

5. Click Yes; then click OK.
6. Start a print job.

You see a dialog box similar to the following:



The print job listed under Printing is currently being printed. Jobs listed under Waiting are queued to begin when the current job is completed. To cancel a print job, click the name of the job and then click Cancel Printing.

Calibrating the Printer with Bi-D Calibration

Your printer has been calibrated at the factory so that vertical lines in your text and graphics are properly aligned. If you notice misaligned images in printouts, however, you can calibrate the printer with the Bi-D Calibration Utility. You may need to do this after moving the printer to a new location, for example.

Follow these steps:

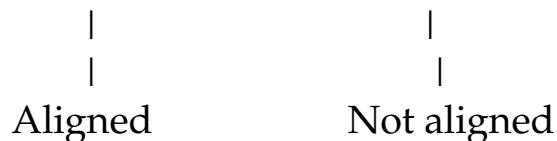
1. Open the Stylus 1500 folder and double-click Bi-D Calibration Utility.
2. You see a prompt asking you to choose how your printer is connected. Click Network.
3. You see the Bi-D Calibration Utility screen. Select your printer and print head [Printer Type, either Stylus 1500 (monochrome) or Stylus 1500 (color)] to be calibrated.
4. Make sure paper is loaded in the printer; then click the Preview button to print a preview of all available calibration patterns. Use these pages to select the patterns that need to be calibrated.

Note:

If you want to stop printing the preview patterns, press Pause and then turn off the printer using the Operate button.

5. For example, if the lines shown under Pattern 2 need to be aligned, highlight Pattern 2 in the Choose Pattern pop-up menu and then click Start.

Wait while the printer prints a page containing multiple patterns of vertical lines, each assigned with an offset value. In most patterns, the vertical lines are slightly misaligned. Look for the pattern that is most closely aligned.



6. Enter the offset value of the pattern that is most closely aligned in the NO. box and click OK. Wait for the printer to print the pattern Confirming Alignment Sheet for the offset value you entered.

7. Repeat steps 4 and 5 for each of the patterns that need to be aligned.
8. When you finish, click Quit.
9. A dialog box opens reminding you to save the new settings by turning the printer off using the Operate button. Settings will not be saved if you turn off the power to the printer with a wall switch or from a power strip.

If you notice later that the vertical alignment of your printed pages is off, repeat the calibration procedure.

Index

A

Accessories, purchasing, Intro-4, 2-13
Aligning vertical lines, 2-13,
 3-2 to 3-4
Apple Macintosh
 driver, *see* Printer driver
 model, 1-1
AppleTalk, making active, 2-6
AT-StylusColor driver, 2-2 to 2-3
Attaching
 output tray, 1-4
 paper support, 1-4
Auto sheet feeder, 1-17 to 1-21
Automatic halftone option, Intro-3,
 2-7 to 2-8, 2-10

B

Background printing, 2-5, 3-1
Banding, 2-13
Banner paper, 2-11
Bi-D Calibration Utility, 2-1, 2-3, 3-2,
 3-4
Bidirectional printing, 2-13
Black ink cartridge, installing,
 1-6 to 1-8
Bulletin Board Service, Intro-5

C

Cable, printer, 1-1 to 1-2
Calibrating the printer, 1-17, 2-13,
 3-2, 3-4
Canceling print jobs, 3-1 to 3-2
Centered paper, 2-15
Chooser, 2-4 to 2-6
Cleaning print heads, 1-22
CMYK, 1-16, 2-8 to 2-9
Coated papers, Intro-3, 2-8,
 2-11 to 2-12

Color ink cartridge, installing,
 1-12 to 1-14
Color matching
 guidelines, 1-16 to 1-17
 setting, Intro-3
Color print head, installing,
 1-9 to 1-12
Color printing guidelines,
 1-16 to 1-17
Composite black, 2-9
CompuServe, Intro-5
Cord, power, 1-5
Custom paper sizes, 2-14 to 2-16
Customer support, Intro-4 to Intro-5

D

Default settings, printer driver, 2-6,
 2-8
Diffusion, error, 2-8, 2-10
Disk space, 1-1, 1-16
Dithering, 2-8, 2-10
Dpi, Intro-1 to Intro-2
Draft printing, 2-11
Driver, *see* Printer driver

E

Edge guides, 1-19 to 1-21
Electromagnetic interference, 1-2
Enlarge option, 2-16
Envelopes, 2-15
EPSON
 Accessories, Intro-4
 America Forum, Intro-5
 Customer Care Centers, Intro-4
 Monitor2 utility, 2-1, 2-3, 2-5,
 3-1 to 3-2
 Namer, 2-3 to 2-4
 papers, Intro-3, 2-12

Error diffusion, 2-8, 2-10
Ethernet, 1-2, 1-23 to 1-26

F

Fast printing, 2-13
Feeder, *see* Auto sheet feeder
Film, *see* Transparencies
Finest Detail mode, 2-8, 2-13
Flip Horizontal setting, 2-8, 2-14
Flip Vertical setting, 2-8, 2-14

G

Glossy paper, Intro-3, 2-8,
2-11 to 2-12
Grayscale, Intro-1, 2-9, 2-13

H

Halftoning settings, Intro-3, 2-6,
2-8 to 2-10
Hard disk space, 1-1, 1-16
Help, where to get, Intro-4
High Speed mode, 2-8, 2-11, 2-13

I

Ink
 conserving, 2-11
 delivery system, charging, 1-8, 1-15
 setting, Intro-3, 2-8 to 2-9
Ink smear, preventing, 2-12
Installation, optional interface
 boards, 1-23 to 1-24
Interface board, Intro-1, 1-23 to 1-24
Invert Image setting, 2-8, 2-14

L

Landscape setting, 2-15
Light/Dark slider, 2-8, 2-10
Lines, aligning vertical, 2-13,
3-1 to 3-2, 3-4
Loading paper, 1-17 to 1-21
LocalTalk
 connecting, 1-24 to 1-25
 interface board, Intro-1, 1-23 to 1-24
Location, choosing for printer, 1-2

M

Macintosh, version, 1-1
Managing print jobs, 2-5, 3-1 to 3-2
Media Type setting, 2-8, 2-12
Memory, 1-1, 2-13
Method setting, 2-6, 2-8, 2-10
MicroWeave mode, 2-8, 2-11, 2-13
Monitor, 1-16
Monitor utility, 2-1, 2-3, 2-5,
3-1 to 3-2
Monochrome mode, 2-8 to 2-9

N

Namer utility, 2-3 to 2-4
Network interface mode, turning on,
1-26
Network, connecting the printer,
Intro-1, 1-24 to 1-26
No halftoning option, 2-8, 2-10
Notice Sheet, 1-3

O

Offset value, 3-3
Online support, Intro-5
Operate button, 1-5, 1-21
Optional interface, 1-23 to 1-24
Orientation of paper, 2-15
Output tray, 1-4

P

Page Gap setting, 2-11

Paper

- centered, 2-15
- coated, Intro-3, 2-8, 2-11 to 2-12
- custom sizes, 2-14, 2-16
- envelopes, 2-15
- glossy, Intro-3, 2-8, 2-11 to 2-12
- loading plain paper, 1-17 to 1-21
- ordering EPSON, Intro-3, 2-12 to 2-13
- orientation, 2-15
- plain, 2-12
- printable area, 2-15
- printable surface, 1-17
- selecting size, 2-14, 2-16
- selecting type, 2-8, 2-13
- size, 2-15 to 2-16
- special, Intro-3
- transparencies, Intro-3, 2-8, 2-12
- types, 2-8

Paper support, 1-3 to 1-4

Paper-release lever, 1-17

Parallel interface, Intro-1

Plain paper, 2-12

Plain paper, loading, 1-17 to 1-21

Plugging in printer, 1-5

Portrait setting, 2-15

Power cord, 1-5

Power switch, *see* Operate button

Print

- direction, 2-13
- jobs, managing, 2-5, 3-1 to 3-2
- options, 2-8
- quality, improving, Intro-2
- speed, 1-16, 2-13

Print heads

- cleaning, 1-22
- moving, 1-9

Printer

- calibrating, 2-13, 3-2 to 3-4
- choosing location for, 1-2
- cleaning the print heads, 1-22
- connecting, 1-24, 1-26
- installing, 1-1 to 1-26
- plugging in, 1-5
- setting up, 1-3, 1-5, 1-17, 1-22
- system requirements, 1-1
- testing, 1-21
- transporting, 1-3
- turning on and off, 1-5, 1-21
- unpacking, 1-3

Printer driver

- accessing, 2-6 to 2-8
- default settings, 2-6, 2-8
- diskette, 1-3, 2-1
- installing, 2-1 to 2-6
- settings, Intro-2 to Intro-3, 1-16, 2-8
- using, 2-6 to 2-16
- utilities, 2-1, 2-3, 3-1 to 3-4

Printing

- background, 2-5, 3-1
- bidirectional, 2-13
- canceling, 3-1 to 3-2
- draft, 2-11
- fast, 2-13
- managing, 2-5, 3-1 to 3-2

Q

Quality, improving, Intro-2

R

RAM requirements, 1-1, 2-13
README1st icon, Intro-2, 2-2
Reduce option, 2-16
Reference Guide, Intro-2 to Intro-3
Requirements, system, 1-1 to 1-2
Resolution
 definition, Intro-2
 selecting, 2-8, 2-11 to 2-12
RGB method, 1-16

S

Safety instructions, Intro-6
Scanners, 1-16 to 1-17
Screen pattern setting, 2-8, 2-14
Self test, 1-22
Service, Intro-4
Sheet feeder, auto, 1-22
Special papers, Intro-3, 2-12 to 2-13
Support, online, Intro-5
System requirements, 1-1 to 1-2

T

Technical assistance, Intro-4
Temperature, 1-2
Terminator, 1-2, 1-25
Testing the printer, 1-21
Tractor feeder, 1-17
Transparencies, Intro-3, 2-8,
 2-12 to 2-13
Transporting the printer, 1-3
Turning the printer on and off, 1-5,
 1-21

U

Unpacking the printer, 1-3
Utilities, printer driver, 2-1, 3-1 to 3-4

V

Vertical lines, aligning, 2-13,
 3-1 to 3-4
Virus protection, 2-1
Visual effects setting, 2-8, 2-14

Printer Parts

