

Read This First

This document contains important information about your Epson Stylus® RIP Professional 2.0 software, including:

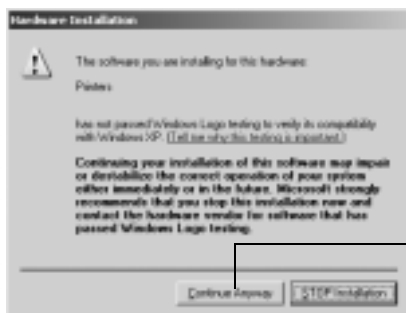
- What you need to know before you install the software on your Windows® system
- Instructions for viewing the on-screen *User's Guide*
- Guidelines for setting up the PS Server on Macintosh® OS X
- Which Epson® papers are supported
- Information about sharing your printer on a network

Install Your Windows Printer Driver First

If you're running Windows, be sure to connect the printer to your computer and install the printer software that came with your Stylus Photo 2200 before installing the Stylus RIP software. Otherwise you may experience problems with the Stylus RIP software.

Windows Logo Testing

When you install the Stylus RIP software on Windows XP or 2000, you'll see a message that the software has not passed Windows Logo testing or has not been digitally signed. Click Continue Anyway or Next and continue with installation.



Click here (Windows XP)

Viewing Your On-Screen User's Guide

The on-screen *User's Guide* includes all the information you need to install, set up, and use your software. Follow the instructions for your operating system.

Macintosh

1. Insert the Epson CD-ROM included with the Stylus RIP software in your drive.
2. If necessary, double-click the EPSON Stylus RIP Pro 2.0 icon on your desktop to open its window.
3. Double-click the Manual folder.
4. Double-click the INDEX.HTM icon. The *User's Guide* opens in your Internet browser.

Windows

1. Insert the Epson CD-ROM that came with the Stylus RIP software in your drive.
2. Click Cancel to close the language-selection dialog box.
3. **Windows XP:** Click Start > My Computer.

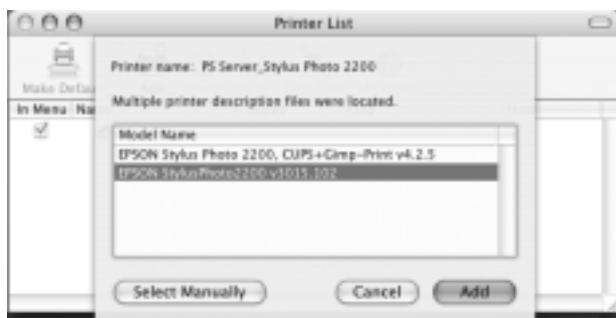
Other Windows systems: Double-click the My Computer icon on your desktop.

4. Right-click the EPSON Stylus RIP Pro icon and click Explore.
5. Double-click the english folder.
6. Double-click the INDEX.HTM icon. The *User's Guide* opens in your Internet browser.

Setting Up the PS Server on Macintosh OS X

If you're running OS X, you need to select and set up the PS Server in the Print Center or Printer Setup Utility before you can print with the Stylus RIP software. Follow these guidelines:

- To use the AppleTalk® and Rendezvous® protocols, the computer that you use as the PS Server must be connected to a network. If your computer is not connected to a network, use the IP Printing protocol.
- When you select the Printer Model from the drop-down menu on the Printer List, be sure to select Epson (initial capital letter only). Do not select EPSON (all capital letters) because this selection cannot be used with the Stylus RIP driver.
- If the message Multiple printer description files were located appears when you're selecting the Printer Model, select Epson StylusPhoto2200 from the drop-down list. Do not select Epson Stylus Photo 2200, CUPS+Gimp-Print because this selection cannot be used with the Stylus RIP driver.



For more information about setting up the PS Server on OS X, see the “Printing with PS Server” section in the “Using the Stylus RIP Professional with Macintosh” chapter of your on-screen *User's Guide*.

Epson Premium Paper Support

Stylus RIP Professional 2.0 does not support Epson Premium Glossy Photo Paper. We recommend using one of the following papers:

- Epson Premium Semigloss Photo Paper
- Epson Enhanced Matte Paper
- Epson Watercolor Paper Radiant White
- Epson Proofing Paper Commercial Semimatte

You can purchase paper and other accessories from Epson at (800) 873-7766, or visit www.epsonstore.com (U.S. sales only). In Canada, please call (800) 463-7766 for dealer referral.

Sharing Your Printer on a Network

Not all features described in the on-screen *User's Guide* are supported by your printer, since this guide covers multiple printers. Stylus RIP Professional 2.0 for the Stylus Photo 2200 does not support an optional network interface card. For instructions on sharing your printer on a network, visit <http://support.epson.com> and do the following:

1. Scroll to the bottom of the page and click Other Products > EPSON Software.
2. Click EPSON StylusRIP Professional 2.0 (Stylus Photo 2200). Then click the FAQs icon.

Epson and Epson Stylus are registered trademarks of Seiko Epson Corporation.

General Notice: Other product names used herein are for identification purposes only and may be trademarks of their respective owners. Epson disclaims any and all rights in those marks.