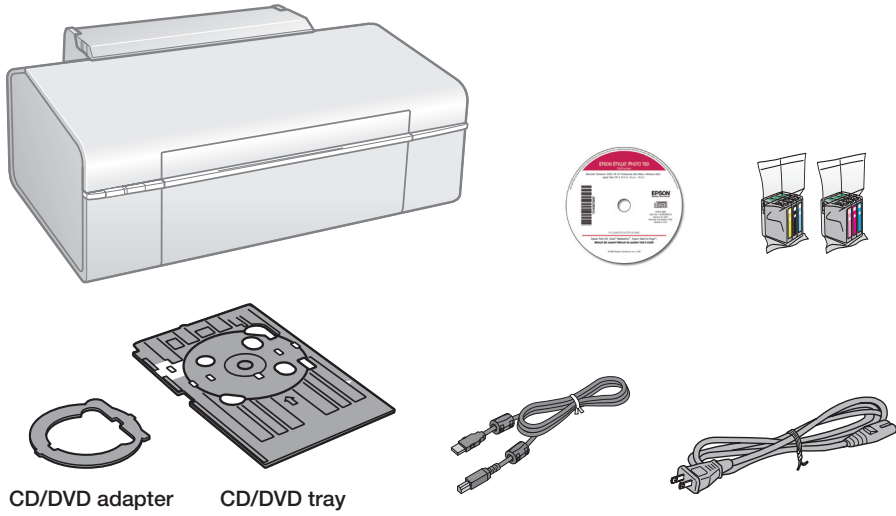


Epson Stylus® Photo T50

Start Here

Please read these instructions before using the printer.

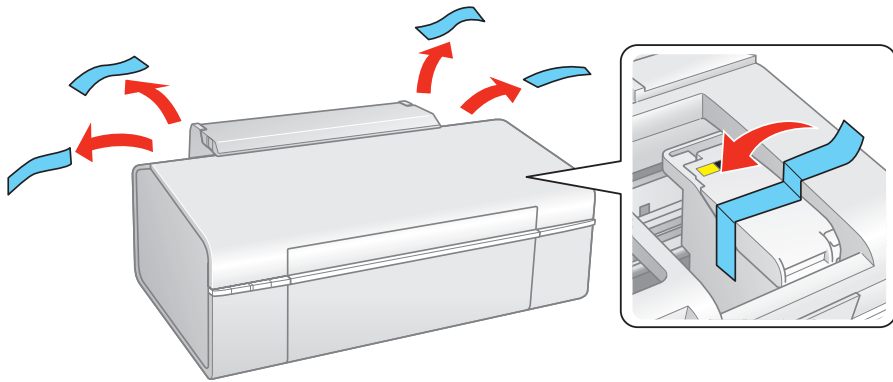
1 Unpack



Caution: Do not open ink cartridge packages until you are ready to install the ink. Cartridges are vacuum packed to maintain reliability.

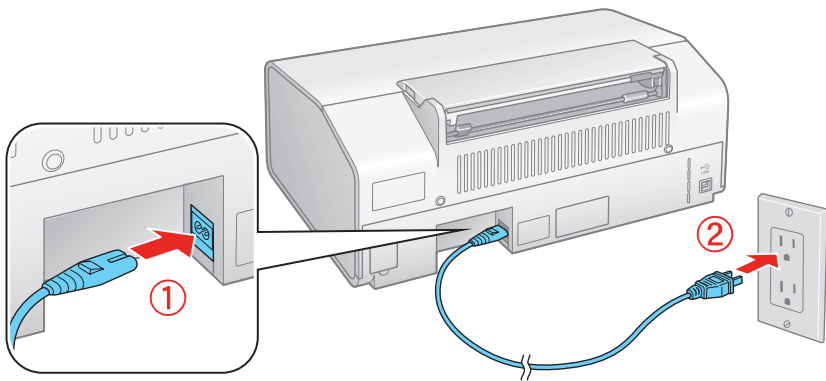
If anything is missing, contact Epson as described on the back of this sheet.

Remove all protective materials.



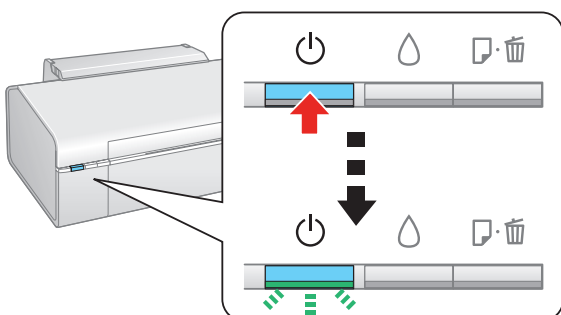
2 Turn on the printer

1 Connect the power cable.



Caution: Do not connect to your computer yet.

2 Press the power button.



3

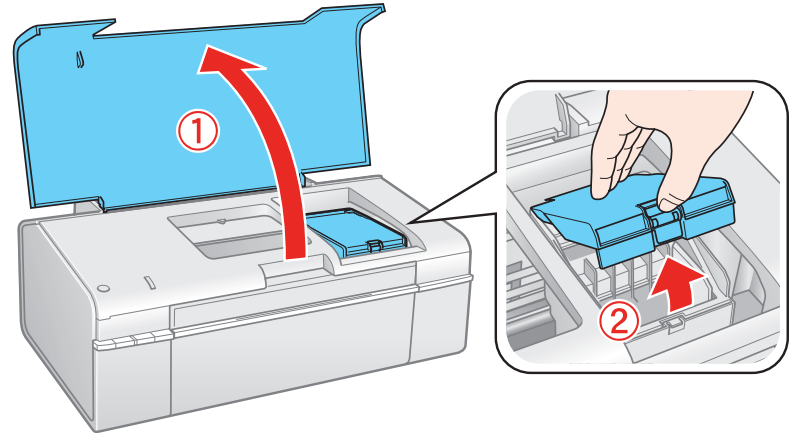
Install ink cartridges

Caution: Keep ink cartridges out of the reach of children and do not drink the ink.

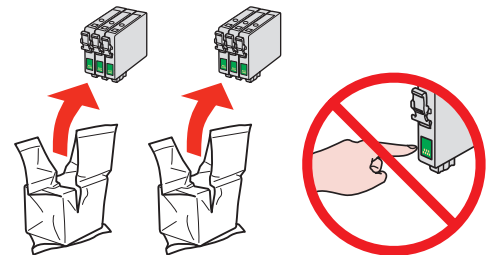
Note: The ink cartridges that come with your printer have a lower yield due to the ink system charging process. This process is carried out the first time you turn on your printer and guarantees better performance.

Don't load paper before installing ink cartridges.

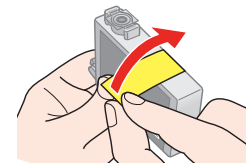
1 Lift up the printer cover, then open the cartridge cover.



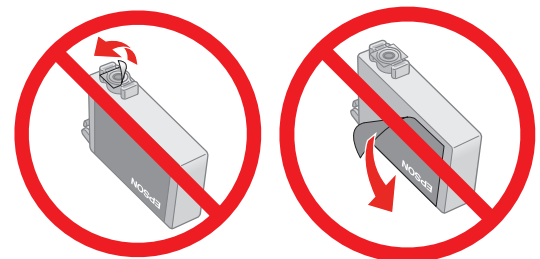
2 Unpack the ink cartridges.



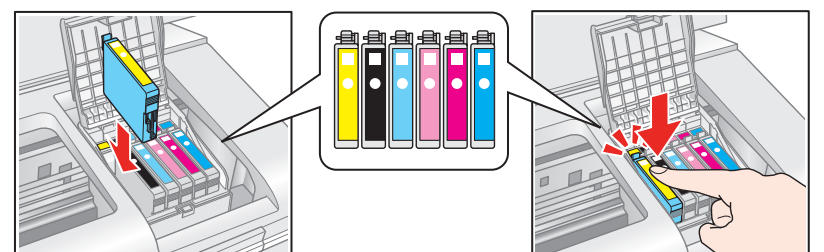
3 Remove only the yellow tape from each cartridge.



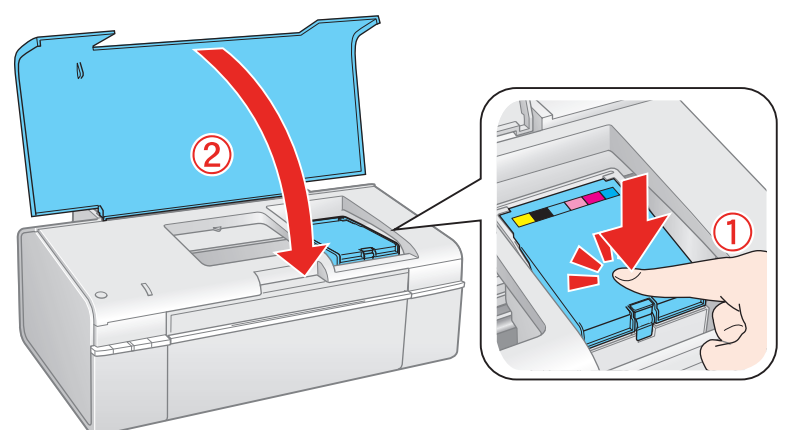
Caution: Don't remove any other seals from the cartridges.




4 Insert the cartridges in the holder for each color. Press the cartridges down until they click.

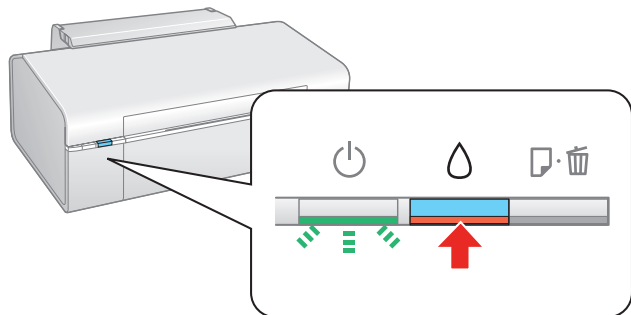



5 Close the ink cartridge cover and press it down until it clicks. Then close the printer cover.



411642400

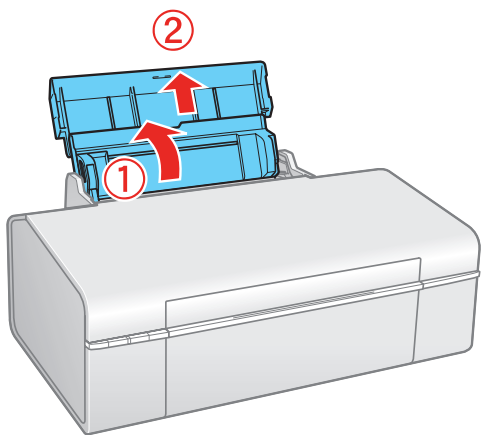
- 6** Press the  ink button to charge ink. Charging takes about 3 minutes.



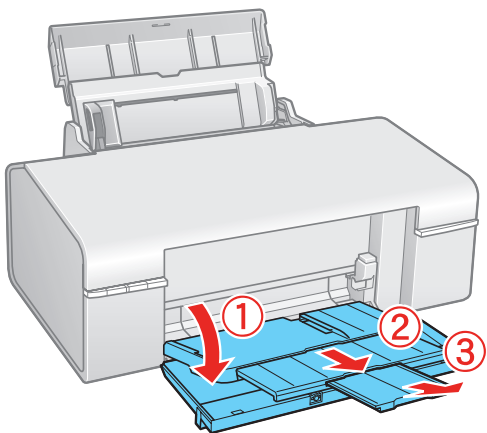
Caution: Don't turn off the printer while the  power light is flashing or you'll waste ink.

4 Load paper

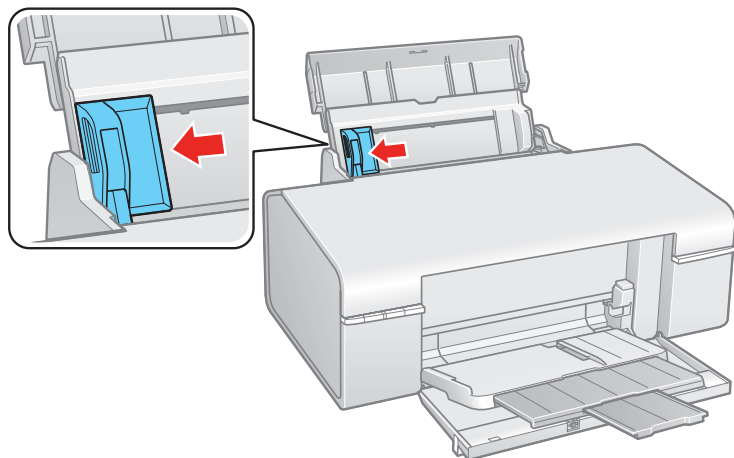
- 1** Open the paper support, then pull up the extension.



- 2** Open the front cover and pull out the tray extensions.

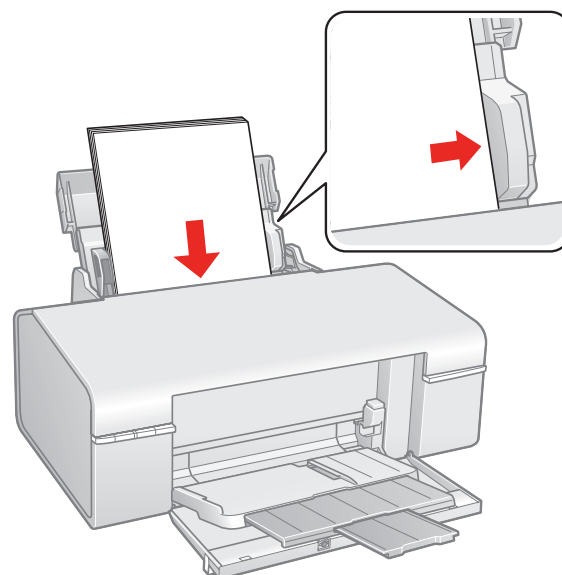


- 3** Slide the edge guide to the left.

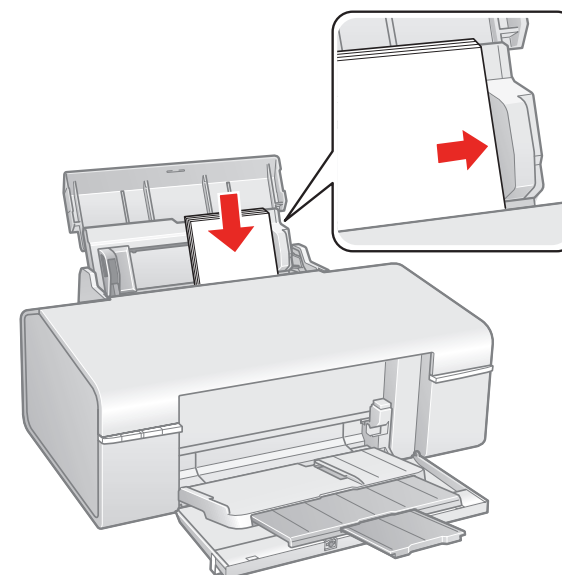


- 4** Load paper against the right edge guide and behind the tab, with the printable side face up.

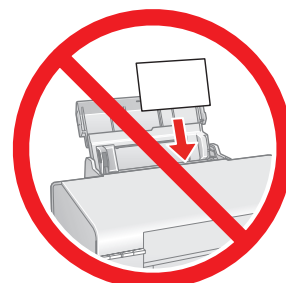
A4, Letter,
or
8 x 10



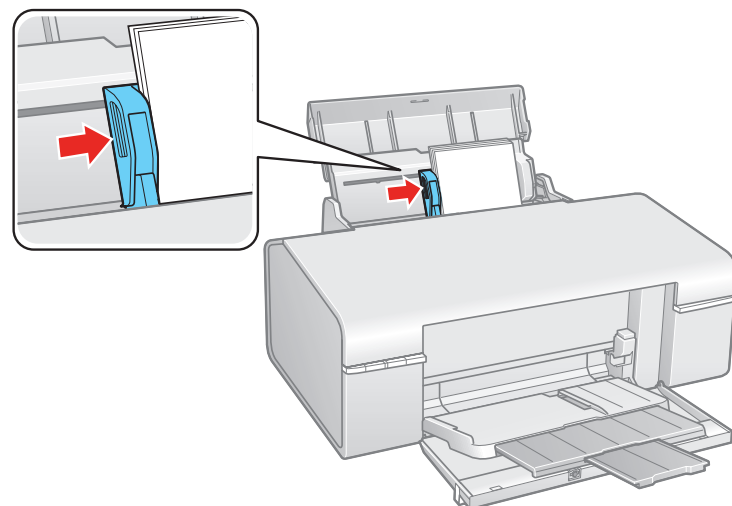
4 x 6
or
5 x 7



Note: Don't load the paper sideways; always load it short edge first.



- 5** Slide the edge guide over.

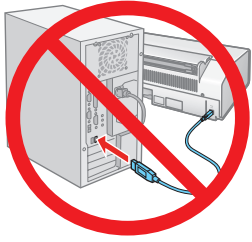


5 Install software

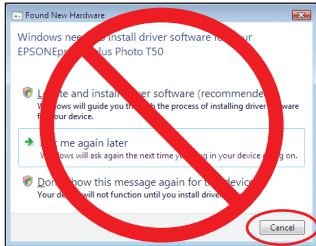
Your software works with Windows® 2000, XP, XP Professional x64 Edition, Windows Vista®, and Mac OS® X 10.3.9, 10.4.x, and 10.5.x.

Windows

- 1 Make sure the printer is **NOT CONNECTED** to your computer.

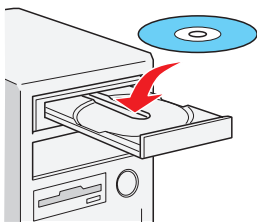


Note: If you see a Found New Hardware screen, click **Cancel** and disconnect the USB cable. You can't install your software that way.



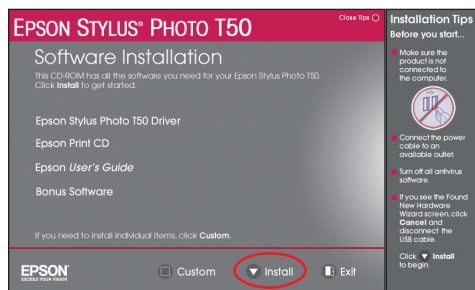
- 2 Insert the Epson Stylus Photo T50 software CD.

With Windows Vista, if you see the AutoPlay window, click **Run Setup.exe**. When you see the User Account Control screen, click **Continue**.

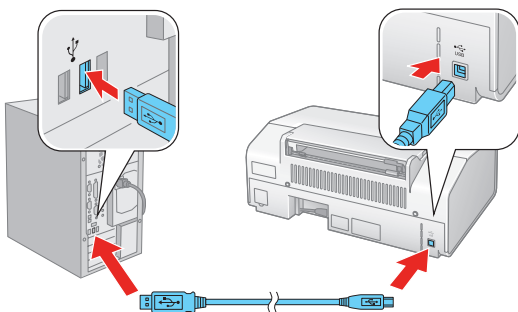


- 3 Select **English**.

- 4 Click **Install** and follow the on-screen instructions.



- 5 When prompted, connect the USB cable. Use any open USB port on your computer.



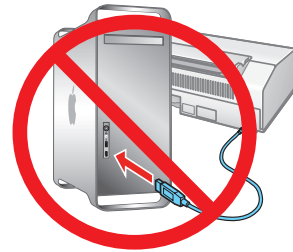
Note: If installation doesn't continue after a moment, make sure you securely connected and turned on the printer.

- 6 Follow the on-screen instructions to install the rest of the software.
- 7 When you're done, remove the CD.


You're ready to print! See your on-screen *User's Guide* for instructions.

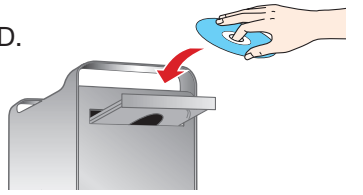
Macintosh®

- 1 Make sure the printer is **NOT CONNECTED** to your computer.



- 2 Insert the Epson Stylus Photo T50 software CD.

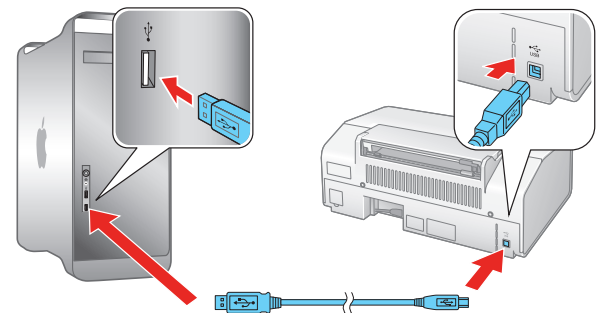
- 3 Double-click the  **Epson** icon.



- 4 Click **Install** and follow the on-screen instructions.



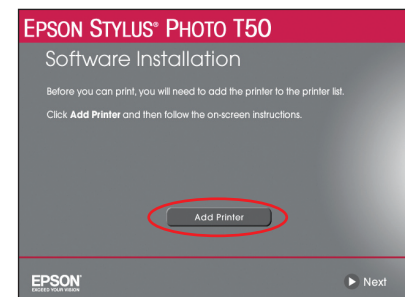
- 5 When prompted, connect the USB cable. Use any open USB port on your computer.



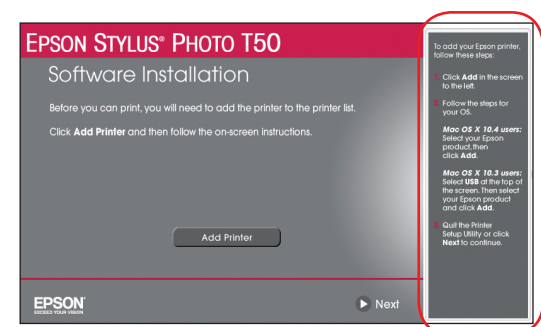
If you're using Mac OS X 10.5.x, skip to step 9.

If you're using Mac OS 10.3.9 or 10.4.x, continue with the next step.

- 6 When you see this screen, click **Add Printer**.



- 7 Follow the steps on the right side of the screen to add the printer.



- 8 Click **Next** again, if necessary.



- 9 Follow the on-screen instructions to install the rest of the software.

- 10 When you're done, eject the CD.

You're ready to print! See your on-screen *User's Guide* for instructions.

Solving problems

The printer makes noise after ink cartridge installation.

- The first time you install ink cartridges, the printer must charge its print head for 3 minutes or so. Wait until charging finishes (the  power light stops flashing) before you turn off the printer, or it may charge improperly and use excess ink the next time you turn it on.
- If the printer stops moving or making noise, but the  power light is still flashing after 5 minutes, turn off the printer. If the light is still flashing when you turn it back on, contact Epson as described in “Any Questions?”.
- Make sure the ink cartridges are inserted completely and the ink cartridge cover is closed completely.

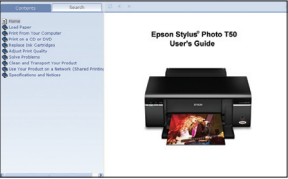
You're having problems installing the printer software.

- During software installation, you are prompted to connect the USB cable. When you connect the cable, make sure your printer is turned on and the cable is securely connected at both ends.
- Close your other programs, including any screen savers and virus protection software, and install the software again.

Any questions?

On-screen User's Guide

Click the desktop shortcut.



On-screen help with your software

Select **Help** or **?** when you're using your software.

Technical Support

Internet Support

Visit Epson's support website at www.latin.epson.com and select your product for solutions to common problems. You can download drivers, get FAQs and troubleshooting advice, or e-mail Epson with your questions. (Site available in Spanish and Portuguese only.)

Telephone Support

Argentina	(54-11) 5167-0300	Mexico	01-800-087-1080
Brazil	(55-11) 3956-6868	Mexico City	(52-55) 1323-2052
Chile	(56-2) 230-9500	Peru	(51-1) 418-0210
Colombia	(57-1) 523-5000	Venezuela	(58-212) 240-1111
Costa Rica	(50-6) 210-9555		
	800-377-6627		

Need paper and ink?

Use genuine high quality Epson paper with Hi-Definition Photographic Ink to get photo lab quality results. You can purchase Epson ink and paper from an Epson authorized reseller. To find the nearest one, contact Epson.

Genuine Epson Paper

Epson offers a wide variety of papers to meet your needs; see your online *User's Guide* for more information.





Premium Photo Paper Glossy

High gloss, instant-drying paper for beautiful, durable photos made to share or display in an album.

Genuine Epson Inks



Look for the numbers below to find your cartridges. It's as easy as remembering your number!

Color	Standard-capacity	High-capacity
 Black	82N	81N
 Cyan	82N	81N
 Magenta	82N	81N
 Yellow	82N	81N
 Light Magenta	82N	81N
 Light Cyan	82N	81N

Epson and Epson Stylus are registered trademarks, and Epson Exceed Your Vision is a registered logomark of Seiko Epson Corporation.

General Notice: Other product names used herein are for identification purposes only and may be trademarks of their respective owners. Epson disclaims any and all rights in those marks.






This information is subject to change without notice.

© 2009 Epson America, Inc. 1/09

CPD-27284

Cut out the card to the right and keep it with you when purchasing replacement ink cartridges.

Ink Cartridges for Epson Stylus® Photo T50

Color	Standard-capacity	High-capacity
 Black	82N	81N
 Cyan	82N	81N
 Magenta	82N	81N
 Yellow	82N	81N
 Light Magenta	82N	81N
 Light Cyan	82N	81N