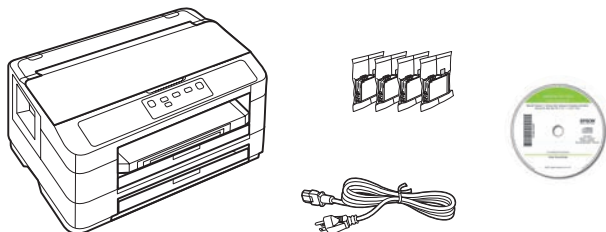


WorkForce® WF-7010 Start Here

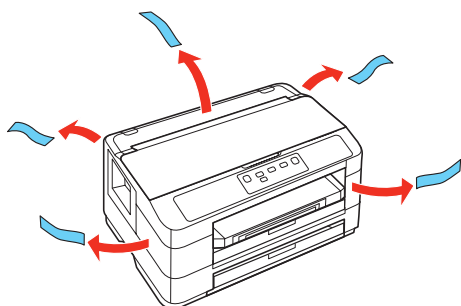
Read these instructions before using your printer.

1 Unpack



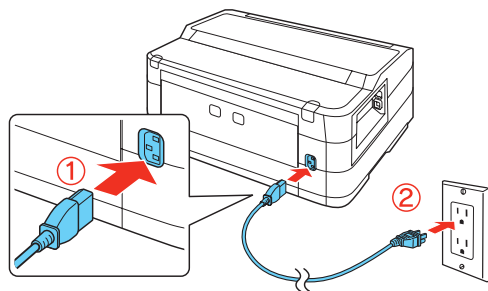
Caution: Do not open ink cartridge packages until you are ready to install the ink. Cartridges are vacuum packed to maintain reliability.

Remove all tape and protective materials, including the foam and plastic inside the printer.



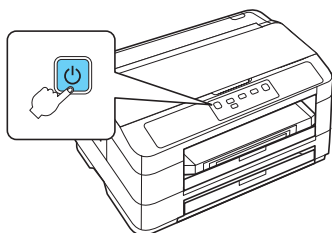
2 Turn on

- 1 Connect the power cord.



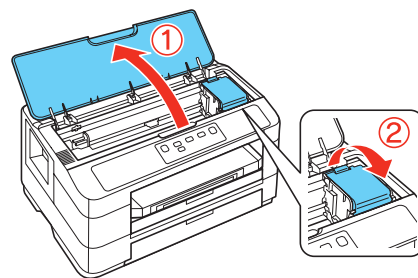
Caution: Do not connect to your computer yet.

- 2 Press the power button.

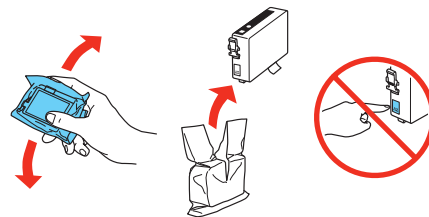


3 Install ink cartridges

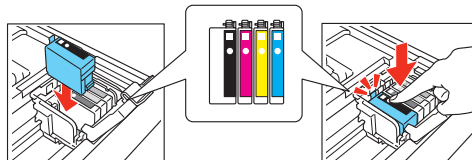
- 1 Open the printer cover and cartridge cover.



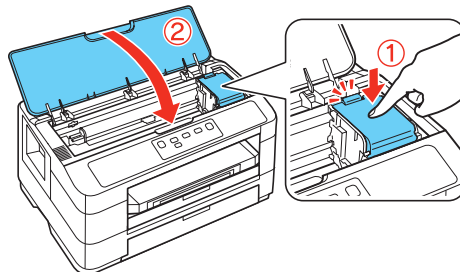
- 2 Shake each cartridge as shown for about 5 seconds and remove from package.



- 3 Install each cartridge in the correct slot for its color. Push each cartridge in until it clicks.



- 4 Close the printer cover and the cartridge cover.



The printer starts priming the ink. This takes about 5 minutes. When the green power light stops flashing, priming is complete.

Caution: Don't turn off the printer or open the cover while it is priming or you'll waste ink.

Note: Your printer ships with full cartridges and part of the ink from the first cartridges is used for priming the printer.



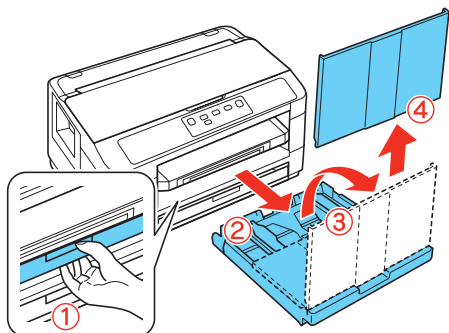
412102600

EPSON®
EXCEED YOUR VISION

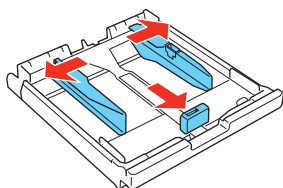
4 Load paper in the cassette

You can load letter-, A4-, or legal-size paper in the cassette. For instructions on loading envelopes and using the rear tray, see the online *User's Guide*.

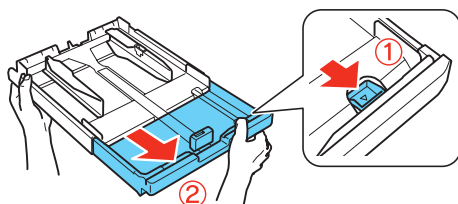
- 1 Pull out a paper cassette, and remove the cover.



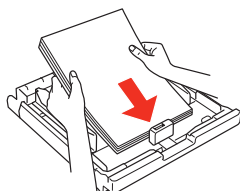
- 2 Slide the edge guides outward.



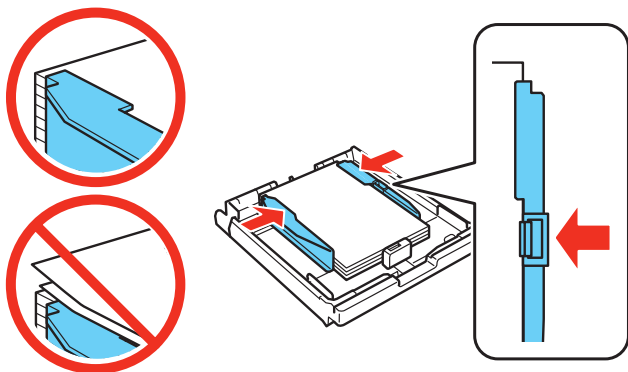
Note: Before loading legal or A3 paper, extend the cassette as shown.



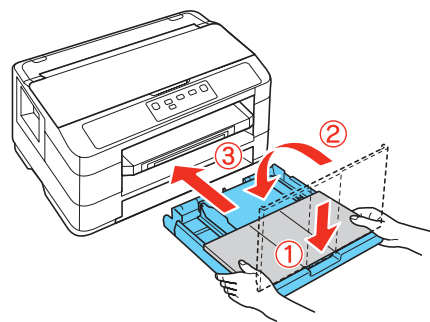
- 3 Insert the paper with the glossy or printable side face down.



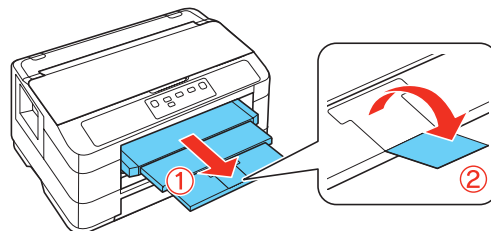
- 4 Slide the edge guides against the paper, but not too tight. Make sure the paper is under the tabs on the edge guides.



- 5 Replace the cover and gently insert the paper cassette.



- 6 Extend the output tray and raise the stopper as shown. (If you are loading legal-size or A3 paper, do not raise the stopper.)



5 Choose your connection

You can connect your printer to your existing network using an Ethernet® cable, or directly to your computer using a USB cable. See below for details on each connection method.

Note: Do not connect the printer to your computer until you're instructed to do so.

Direct USB connection

Make sure you have a USB cable. (Not included.)

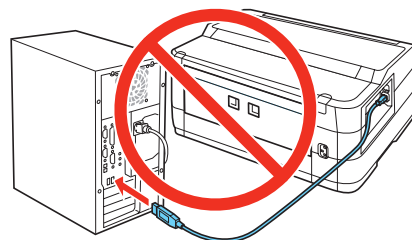
Wired Ethernet connection

Make sure you have an Ethernet network cable. (Not included.) You must install the software on every computer from which you want to print.

6 Install software

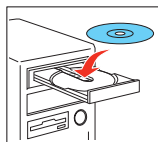
Note: If your computer does not have a CD drive, you can download the software from the Epson website, as described under "Epson technical support."

- 1 Make sure the printer is **NOT CONNECTED** to your computer.



Windows®: If you see a Found New Hardware screen, click **Cancel** and disconnect the USB cable. You can't install your software that way.

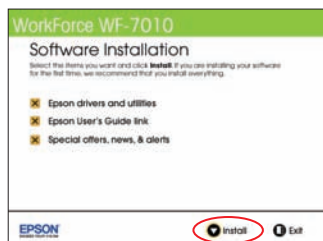
- 2** Insert your product CD.



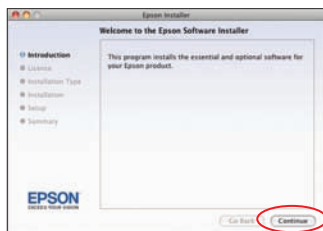
- 3 Windows:** If you see the AutoPlay window, click **Run Setup.exe**. If you see the User Account Control screen, click **Yes** or **Continue**.

Mac OS® X: Double-click the  **Epson** icon.

- 4 Windows:** Click **Install** and follow the on-screen instructions.



Mac OS X: Click **Continue** and follow the on-screen instructions.



Any questions?

User's Guide

Click the icon on your desktop (or in the **Applications/Epson Software/Guide** folder on Mac OS X) to access the online *User's Guide*, software downloads, Epson Supplies Central®, and more (requires an Internet connection). If you don't have a User's Guide icon, you can install it from the CD or go to the Epson website, as described under "Epson technical support."



On-screen help with your software

Select **Help** or **?** when you're using your software.

Epson technical support

Visit epson.com/support (U.S.) or epson.ca/support (Canada) where you can download drivers, view manuals, get FAQs, or e-mail Epson.

You may also speak with a support specialist by calling:

- U.S.: (562) 276-7202, 6 AM to 8 PM, Pacific Time, Monday through Friday, and 7 AM to 4 PM Saturday
- Canada: (905) 709-2567, 6 AM to 8 PM, Pacific Time, Monday through Friday


Days and hours of support are subject to change without notice. Toll or long distance charges may apply.

Recycling

Epson offers a recycling program for end of life products. Please go to www.epson.com/recycle for information on how to return your products for proper disposal.

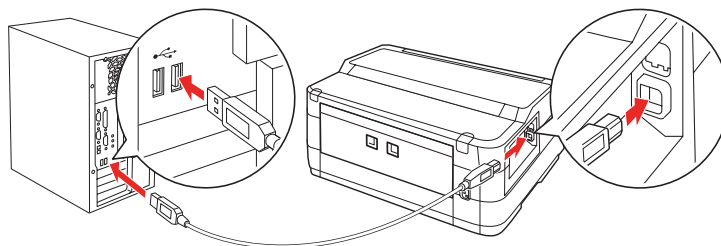
Any problems?

Network setup and printing problems

- Press the  button to print a network status sheet. Verify that the network settings are correct.
- Disable the firewall temporarily to see if that may be causing the problem. Contact your firewall manufacturer for assistance.

Setup is unable to find my printer after connecting it with a USB cable.

Make sure it is securely connected as shown:
























Print quality problems

- Make sure your paper is loaded printable side down in the cassette (usually the whiter, brighter, or glossy side).
- If you notice light or dark bands across your printouts or they are too faint, run a nozzle check to see if the print head needs cleaning. See the online *User's Guide* for more information.
- The ink cartridges may be low on ink. Check your cartridge levels and replace cartridges, if necessary. See the online *User's Guide* for more information.

Error indicators

If you see one of the error indicators below, follow the steps here to proceed:

- On
- Flashing slowly
- Flashing fast

Lights	Problem and solution
	Ink cartridge cover open: If the  light is still flashing 3 minutes after you replaced the ink cartridge, the cartridge cover may not be closed properly. Open the printer cover, close the cartridge cover firmly, and then close the printer cover. Then, press the  button.
	Paper is out, paper size doesn't match, or multiple sheets have fed at the same time. Load paper correctly and press  paper button.
	Paper is jammed in the cassette, the duplexer, or inside the printer. Remove the jammed paper and press the  paper button.
	The indicated ink cartridge is expended or not installed properly. Replace or reinstall the ink cartridge.
	The indicated ink cartridge is running low on ink. Make sure you have a replacement cartridge.
  	The printer cover is open. Close the printer cover.
  Flashing alternately	The printer's ink pads are nearing or at the end of their service life. Contact Epson support to replace ink pads. Resume printing by pressing the  button.
  	Printer error. Turn the printer off, check for jammed paper, then turn the printer back on. If the error does not clear, contact Epson.
  BK  Y	The firmware update has failed, and the printer is in recovery mode. You will need to reattempt the firmware update. Have a USB cable ready, and go to www.epson.com/support for further instructions.

Need paper and ink?

Try Epson paper with DURABrite® Ultra Ink for professional results. For the right supplies at the right time, you can purchase them at Epson Supplies Central at www.epson.com/ink3 (U.S. sales) or www.epson.ca (Canadian sales). You can also purchase supplies from an Epson authorized reseller. To find the nearest one, call 800-GO-EPSON (800-463-7766).



Genuine Epson paper

Epson offers a wide variety of business and photo papers to meet your needs; visit Epson Supplies Central for more information.




Presentation Paper Matte
Smooth, non-glare, instant-drying paper for newsletters and graphical presentations.





Genuine Epson inks



Look for the numbers below to find your cartridges. It's as easy as remembering your number!



WorkForce WF-7010 ink cartridges

Color	High-capacity	Extra High-capacity
 Black	126	127
 Cyan	126	127
 Magenta	126	127
 Yellow	126	127

Epson Connect



Get instant, wireless printing of photos and attachments right from smartphones, iPads, tablets, and other popular mobile devices. See www.epson.com/connect for details.



Epson and Supplies Central are registered trademarks, and Epson Exceed Your Vision is a registered logomark of Seiko Epson Corporation. WorkForce and DURABrite are registered trademarks, and Designed for Excellence is a trademark of Epson America, Inc.

General Notice: Other product names used herein are for identification purposes only and may be trademarks of their respective owners. Epson disclaims any and all rights in those marks.

This information is subject to change without notice.