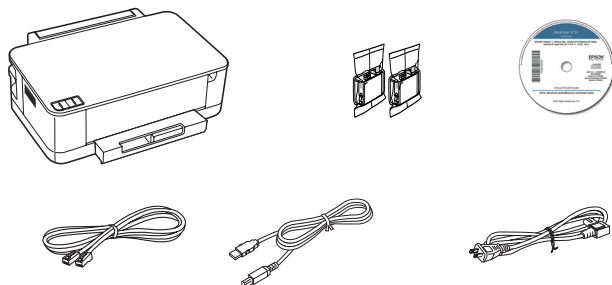


WorkForce® K101 Start Here

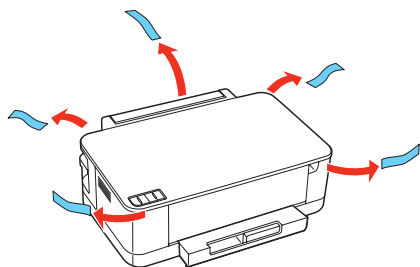
Read these instructions before using your product.

1 Unpack



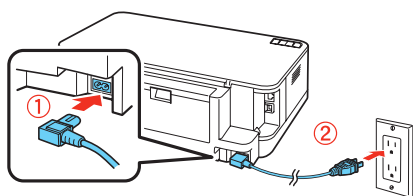
Caution: Do not open ink cartridge packages until you are ready to install the ink. Cartridges are vacuum packed to maintain reliability.

Remove all protective materials.




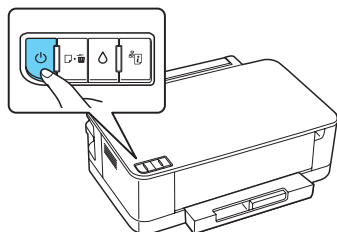
2 Turn on your printer

- 1 Connect the power cable to the back of the printer and to an electrical outlet.



Caution: Do not connect to your computer yet.

- 2 Press the  power button to turn on the printer.

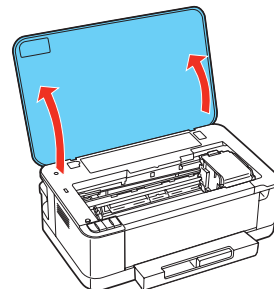


3 Install ink cartridges

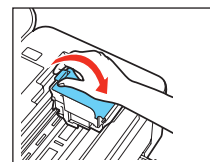
Caution: Keep ink cartridges out of the reach of children and don't drink the ink.

Note: The ink cartridges that come with your printer have a lower yield due to the ink system charging process. This process is carried out the first time you turn on your printer and guarantees better performance.

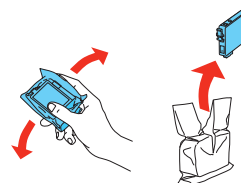
- 1 Open the printer cover.



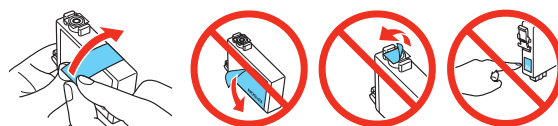
- 2 Open the cartridge cover.



- 3 Shake the ink cartridges gently 4 or 5 times, then unpack them.

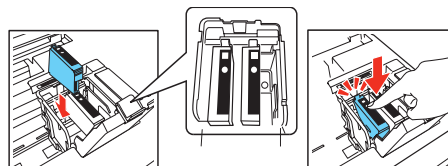


- 4 Remove only the yellow tape from each cartridge.

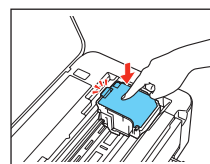


Caution: Don't remove any other seals or the cartridges may leak.

- 5 Insert the cartridges in the ink cartridge holders. Press each cartridge down until it clicks.




- 6 Close the cartridge cover. Press down until it clicks.



412127600

EPSON®
EXCEED YOUR VISION

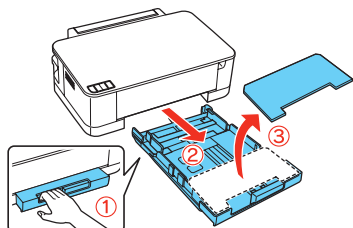
- 7 Close the printer cover.
- 8 Press the  ink button to prime the ink delivery system. Ink priming takes 4 ½ minutes.

Caution: Don't turn off the printer while it is priming or you'll waste ink.

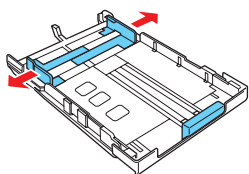
4 Load paper

You can load Letter-, A4-, or Legal-size paper, as well as envelopes. For instructions on loading Legal-size paper and envelopes, see the on-screen *User's Guide*.

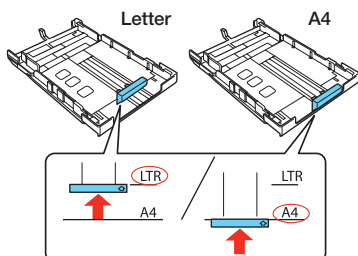
- 1 Pull out the paper cassette at the bottom of the printer and lift off the paper cassette cover.



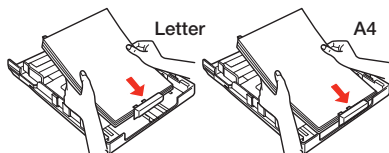
- 2 Slide the edge guides outward.



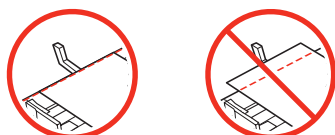
- 3 Position the guide shown below for the size of paper you're using.



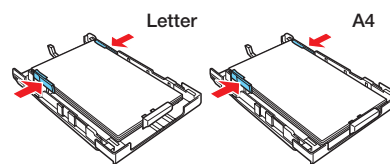
- 4 Insert the paper with the glossy or printable side facedown.



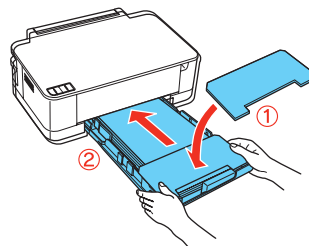
Note: Make sure the paper is loaded against the edge guide and not sticking out from the end of the cassette.



- 5 Slide the edge guides against the paper, but not too tight. Make sure the paper is under the tabs on the edge guides.

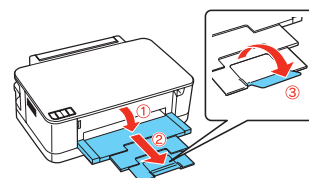


- 6 Replace the paper cassette cover, then gently insert the paper cassette.



Note: The paper may slide forward slightly as you insert the cassette. This is normal.

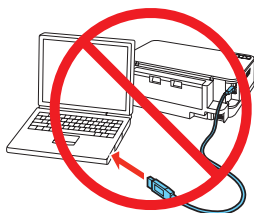
- 7 Extend the output tray as shown.



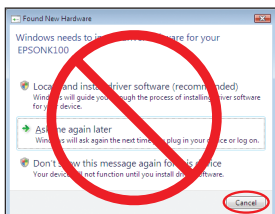
5 Install software

Note: If your computer does not have a CD/DVD drive, you can download the software from the Epson website, as described under “Epson Technical Support”.

- 1 Make sure the printer is **NOT CONNECTED** to your computer.



Windows®: If you see a Found New Hardware screen, click **Cancel** and disconnect the USB cable. You can't install your software that way.



- 2 Insert your product CD.

- 3 **Windows:** If you see the AutoPlay window, click **Run Setup.exe**. If you see the User Account Control screen, click **Yes** or **Continue**.

Mac OS® X: Double-click the  **Epson** icon.

- 4 Select a language, if necessary.

- 5 **Windows:** Click **Install** and follow the on-screen instructions.



Mac OS X: Select the items you want to install. Then click **Install**.



Connection options

You can connect your printer to your existing wired network using an Ethernet® cable or directly to your computer using a USB cable. See below for details on each connection method.

Direct USB connection

Make sure you have a USB cable.


Wired network connection

Make sure you have an Ethernet network cable. You must install the software on every computer from which you want to print.

Any problems?

If you experience problems during setup, see below:

Network setup was unsuccessful.

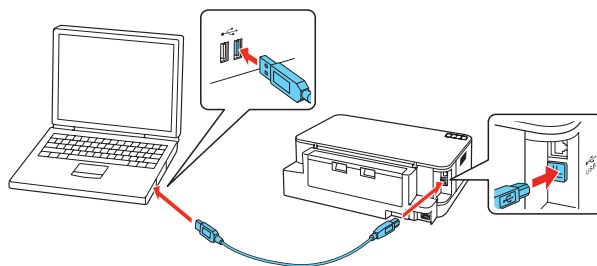
- Make sure you select the right network name.
- If you see a firewall alert message, click **Unblock** or **Allow** to let setup continue.
- If your network has security enabled, make sure you enter your network password (WEP key or WPA passphrase) correctly. If it has uppercase (**ABC**) or lowercase (**abc**) letters, make sure you enter them correctly.
- Make sure the product is turned on and connected to the network.
- If you are using TCP/IP, make sure the printer driver is correctly installed and that the TCP/IP settings are configured correctly.
- Print a Network Status Sheet to see what network settings are currently enabled in the printer. Press the Network Information  button to print a network status sheet.
- Remove and re-insert the product CD to re-install the software.

The product's Ethernet light is on but you can't print.

Your router, access point, or hub might not be assigning IP addresses automatically using DHCP. If it isn't, you will need to set the product's IP address manually. Make sure it is set correctly for your network.

Setup is unable to find my printer after connecting it with a USB cable.

Make sure it is securely connected as shown:



Printing problems

- Make sure the size of paper you loaded matches the paper size selected in your printer software.
- Printing stops when an ink cartridge is expended. If only one of the cartridges is expended, you may be able to continue printing temporarily; see the on-screen *User's Guide* for more information.

Paper feeding problems

If paper doesn't feed correctly, remove the paper and fan the sheets, then reload them. Don't load paper above the tabs on the edge guides.

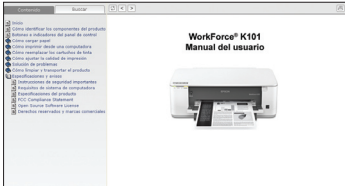
Print quality problems

- Make sure your paper is loaded printable side down (usually the whiter, brighter, or glossy side).
- For the best print quality, use Epson papers and genuine Epson ink cartridges.
- Make sure the type of paper you loaded matches the paper type setting in your printer software. See the on-screen *User's Guide* for more information.
- If you notice light or dark bands across your printouts or they are too faint, run a nozzle check to see if the print head needs cleaning. See the on-screen *User's Guide* for more information.
- If you notice jagged vertical lines, you may need to align the print head. See the on-screen *User's Guide* for instructions.
- The ink cartridges may be low on ink. Check your cartridge levels and replace cartridges, if necessary. See the on-screen *User's Guide* for more information.

Any questions?

User's Guide

Click the desktop shortcut to access the on-screen *User's Guide* (or the **Applications/Epson Software** folder in Mac OS X) to access the *User's Guide*.



On-screen help with your software

Select **Help** or **?** when you're using your software.

Epson technical support

Internet support

Visit www.latin.epson.com download drivers, view manuals, get FAQs, or e-mail Epson (website available only in Spanish and Portuguese).

Telephone support

You may also speak with a support specialist by calling:

Argentina	(54 11) 5167-0300	Mexico	01-800-087-1080
Chile	(56 2) 484-3400	Mexico City	(52 55) 1323-2052
Colombia	(57 1) 523-5000	Peru	0800-10126
Costa Rica	800-377-6627	Lima	(51 1) 418-0210
Ecuador	(593 4) 604-4220	Uruguay	00040-5210067
		Venezuela	(58 212) 240-1111

If your country does not appear on the list, contact the sales office in the nearest country. Toll or long distance charges may apply.

Need paper and ink?

Try Epson paper with DURABrite® Ultra Ink for professional results. For the right supplies at the right time, you can purchase them from an Epson authorized reseller. To find the nearest one, contact Epson.



Genuine Epson paper

Epson offers a wide variety of papers to meet your needs; see the on-screen *User's Guide* for more information.



Presentation Paper Matte
Smooth, non-glare, instant-drying paper for home and business projects.


Genuine Epson ink



Look for the numbers below to find your cartridges. It's as easy as remembering your number!



WorkForce K101 ink cartridges

Color	Code
 Black	136

Epson, WorkForce, and DURABrite are registered trademarks, and Epson Exceed Your Vision is a registered logomark of Seiko Epson Corporation. Designed for Excellence is a registered trademark of Epson America, Inc.

General Notice: Other product names used herein are for identification purposes only and may be trademarks of their respective owners. Epson disclaims any and all rights in those marks.

This information is subject to change without notice.

© 2011 Epson America, Inc. 08/11

CPD-34545