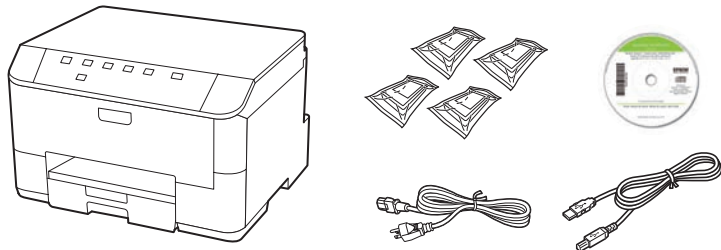


WorkForce® Pro WP-4022

Start Here

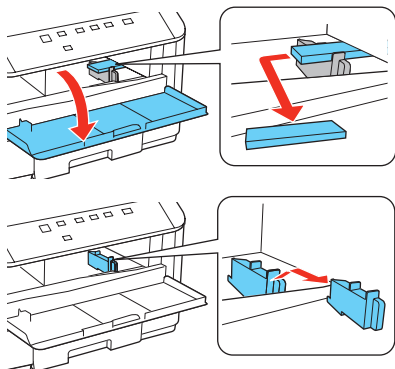
Read these instructions before using your printer.

1 Unpack



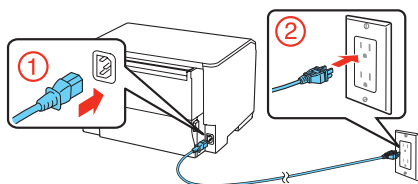
Caution: Do not open ink cartridge packages until you are ready to install the ink. Cartridges are vacuum packed to maintain reliability.

Remove all tape and protective materials, including the foam and plastic inside the printer.



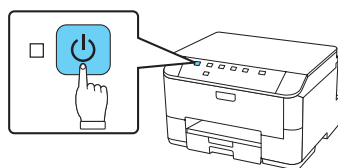
2 Turn on

- 1 Connect the power cord to the back of the printer and to an electrical outlet.



Caution: Do not connect to your computer yet.

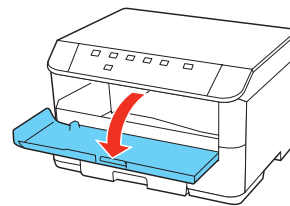
- 2 Press the power button.



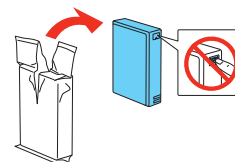
3 Install ink cartridges

Caution: Keep ink cartridges out of the reach of children and don't drink the ink.

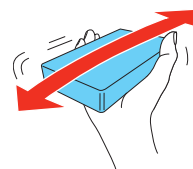
- 1 Open the front cover.



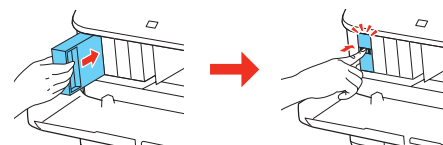
- 2 Unpack the four ink cartridges.



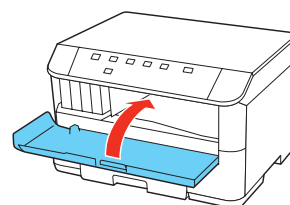
- 3 Shake each cartridge as shown for about 5 seconds.



- 4 Install each cartridge in the correct slot for its color. Push each cartridge in until it clicks.



- 5 Close the front cover.



The printer starts priming the ink. This takes about 12 minutes. When the green power light stops flashing, priming is complete.

Note: The included cartridges prime the printer and print about 1000 black pages/900 color pages. Actual page count will vary.

Caution: Don't turn off the printer, open the cover, or detach the duplexer while it is priming or you'll waste ink.



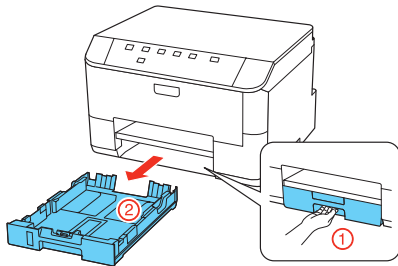
412239100

EPSON®
EXCEED YOUR VISION

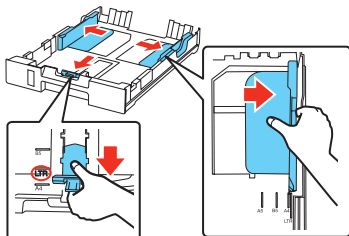
4 Load paper in the cassette

You can load letter-, A4-, or legal-size plain paper in the cassette. For instructions on loading envelopes and special paper in the rear MP tray, see the on-screen *User's Guide*.

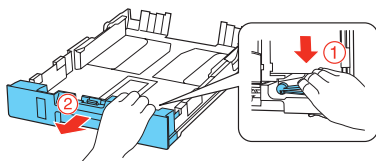
- 1 Pull out the paper cassette.



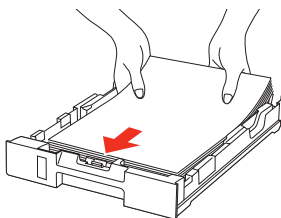
- 2 Slide the edge guides outward, and position them for the type of paper you are using.



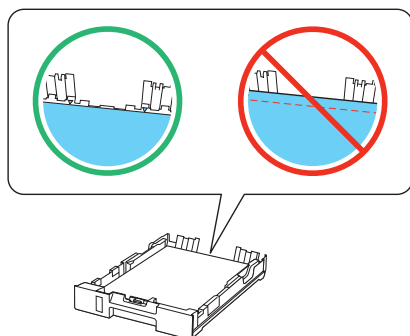
Note: If you are loading legal-size paper, extend the cassette as shown.



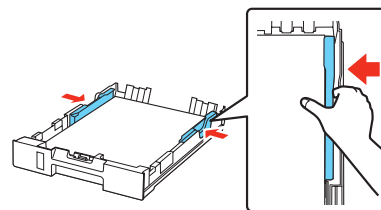
- 3 Insert the paper with the glossy or printable side facedown.



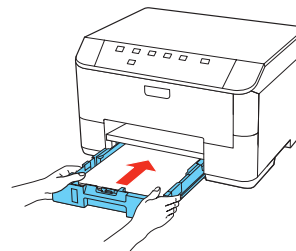
Note: Make sure the paper is loaded against the front edge guide and not sticking out from the end of the cassette.



- 4 Slide the edge guides against the paper, but not too tight. Make sure the paper is under the tabs on the edge guides.

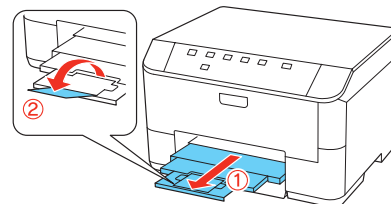


- 5 Gently insert the paper cassette.



Note: The paper may slide forward slightly as you insert the cassette. This is normal.

- 6 Extend the output tray and raise the paper stopper as shown. (Do not raise the stopper for legal-size paper.)

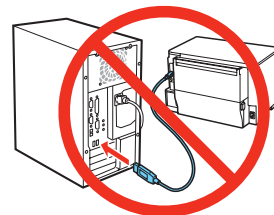


5 Install software

Note: If your computer does not have a CD/DVD drive, you can download the software from the Epson website (see "Epson technical support").

Caution: Be sure to close your other programs, including any screen savers and virus protection software, before beginning the software installation.

- 1 Make sure the printer is **NOT CONNECTED** to your computer.




Windows®: If you see a Found New Hardware screen, click **Cancel** and disconnect the USB cable. You can't install your software that way.

- 2 Insert your product CD.

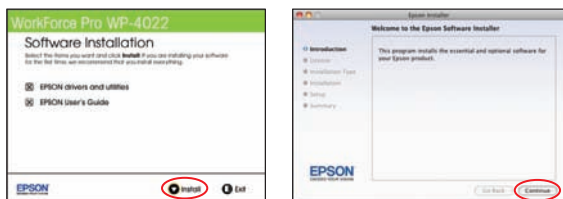


- 3 Windows:** If you see the AutoPlay window, click **Run Setup.exe**. If you see the User Account Control screen, click **Yes** or **Continue**.

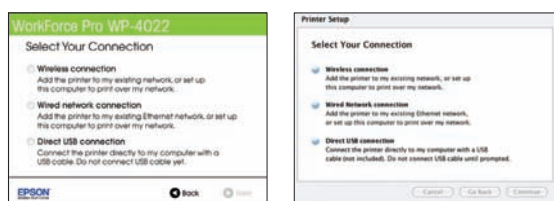
Mac OS X: Double-click the  **Epson** icon.

- 4** Select your language, if necessary.

- 5** Click **Install** (Windows) or **Continue** (Mac OS X) and follow the instructions on your computer screen.



- 6** When you see the Select Your Connection screen, check the "Connection options" section on this sheet for more information. Then click **Next** (Windows) or **Continue** (Mac OS X) and follow the instructions on your computer screen.



Connection options

Wireless connection

You must install the software on every computer from which you want to print. For the first installation, we recommend using a temporary USB cable connection to simplify wireless setup. After the printer is connected to the network, you will be prompted to remove the cable.

Make sure you know your network name (SSID) and network password:

- Network name _____
- Network password _____

If you don't have this information, contact the person who set up your network.

Wired network connection


Make sure you have an Ethernet® network cable (not included). You must install the software on every computer from which you want to print.

Direct USB connection

Make sure you have a USB cable ready.

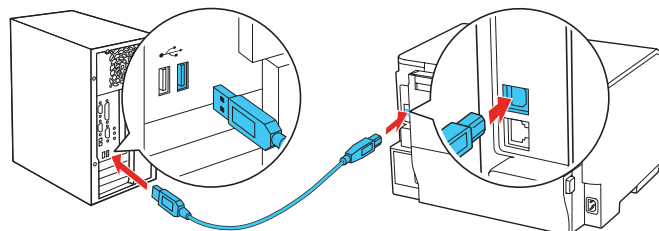
Any problems?

Network setup and printing problems

- If you're connecting the printer via Wi-Fi Protected Setup (WPS), make sure you press and hold the **Wi-Fi** button on the printer within 2 minutes of pressing the WPS button on your router. Press and hold the **Wi-Fi** button on the printer for 3 seconds.
- Try connecting to the router or access point with your computer or another device to confirm that it is working correctly.
- Try resetting the router (turn it off and then on), then try to connect to it again.
- Press the  button to print a network status sheet. Verify that the network settings are correct and check the signal strength. If it's poor, try moving the printer closer to your router or access point. Avoid placing the printer next to a microwave oven, 2.4 GHz cordless phone, or large metal objects such as a filing cabinet.
- If your router or access point doesn't broadcast its network name (SSID), manually enter the name. If your router or access point has wireless security enabled, you'll also need to know what kind of security it's using and make sure you enter the WEP key or WPA passphrase correctly.
- When using TCP/IP, make sure your network's DHCP option is enabled. If you have assigned a static IP address, make sure it is not being used by another device.
- Disable the firewall temporarily to see if that may be causing the problem. Contact your firewall manufacturer for assistance.

Setup is unable to find my printer after connecting it with a USB cable.

Make sure it is securely connected as shown:



Printing problems



Printing stops when an ink cartridge is expended. If a cartridge is expended, you must replace it to continue printing.














Print quality problems

- Make sure your paper is loaded printable side down in the cassette (usually the whiter, brighter, or glossy side).
- If you notice light or dark bands across your printouts or they are too faint, run a nozzle check to see if the print head needs cleaning. See the on-screen *User's Guide* for more information.
- The ink cartridges may be low on ink. Check your cartridge levels and replace cartridges, if necessary. See the on-screen *User's Guide* for more information.

Error indicators

If you see one of the error indicators below, follow the steps here to proceed:

- ■ On  Flashing slowly  Flashing fast

	Paper is out, paper size doesn't match, or multiple sheets have fed at the same time. Load paper correctly and press the  paper feed button.
	Paper is jammed in the cassette, the duplexer, or inside the printer. Remove the jammed paper and press the  paper feed button.
	The front cover is open. Close the cover.
	The indicated ink cartridge is running low on ink. Make sure you have a replacement cartridge.
	The indicated ink cartridge is expended or not installed correctly. Replace or reinstall the ink cartridge.
	The maintenance box is nearing the end of its service life. Make sure you have a replacement box.
	The maintenance box is at the end of its service life or not installed. Press the  and  ink buttons at the same time to clear the error, then replace the maintenance box.
	Printer error. Turn the printer off and check for jammed paper. Make sure you remove the protective foam and plastic from inside the printer. Then turn the printer back on. If the error does not clear, contact Epson.
	Wi-Fi connection error. Press the Wi-Fi button on the printer to clear the error and try again.

Any questions?

On-screen help with your software

Select **Help** or **?** when you're using your software.

User's Guide

Click the icon on your desktop (or in the **Applications/Epson Software/Guide** folder on Mac OS X) to access the on-screen *User's Guide*. If you don't have a *User's Guide* icon, you can install it from the CD or go to the Epson website, as described under "Epson Technical Support."

Epson technical support

Visit global.latin.epson.com/Soporte where you can download English drivers for this product, view manuals, get FAQs, or e-mail Epson (website available only in Spanish and Portuguese).

You may also speak with a support specialist by calling:

Argentina	(54 11) 5167-0300	Mexico	
Bolivia*	800-100-116	Mexico City	(52 55) 1323-2052
Chile	(56 2) 484-3400	Other cities	01-800-087-1080
Colombia	(57 1) 523-5000	Nicaragua*	00-1-800-226-3068
Costa Rica	800-377-6627	Panama*	00-800-052-1376
Dominican Republic*	1-888-760-0068	Peru	
Ecuador*	1-800-000-044	Lima	(51 1) 418-0210
El Salvador*	800-6570	Other cities	0800-10126
Guatemala*	1-800-835-0358	Uruguay	00040-5210067
Honduras**	800-0122	Venezuela	(58 212) 240-1111
	Code: 8320		

*Contact your local phone company to call this toll free number from a mobile phone.

**Dial first 7 digits, wait for a message, then enter code.

If your country does not appear on the list, contact your nearest Epson sales office. Toll or long distance charges may apply.

Need paper and ink?

Try EPSON® paper with DURABrite® Ultra Ink for professional results. For the right supplies at the right time, you can purchase them from an EPSON authorized reseller. To find the nearest one, contact Epson.



Genuine EPSON paper

Epson offers a wide variety of business and photo papers to meet your needs; see the on-screen *User's Guide* for more information.



Presentation Paper Matte

Smooth, non-glare, instant-drying paper ideal for reports, newsletters, and graphical presentations.





Genuine EPSON inks



Look for the numbers below to find your cartridges. It's as easy as remembering your number!



WorkForce Pro WP-4022 ink cartridges

Color	Standard-capacity	High-capacity
 Black	678	677
 Cyan	678	677
 Magenta	678	677
 Yellow	678	677

Wireless printing from mobile devices



Get instant, wireless printing of photos and attachments right from smartphones, iPads, tablets, and other popular mobile devices. See www.latin.epson.com/connect for details (website available only in Spanish and Portuguese).



EPSON, DURABrite, and WorkForce are registered trademarks, and EPSON Exceed Your Vision is a registered logomark of Seiko Epson Corporation. Designed for Excellence is a trademark of Epson America, Inc.

General Notice: Other product names used herein are for identification purposes only and may be trademarks of their respective owners. Epson disclaims any and all rights in those marks.

This information is subject to change without notice.

© 2012 Epson America, Inc. 3/12

Printed in XXXXXX

CPD-36158