

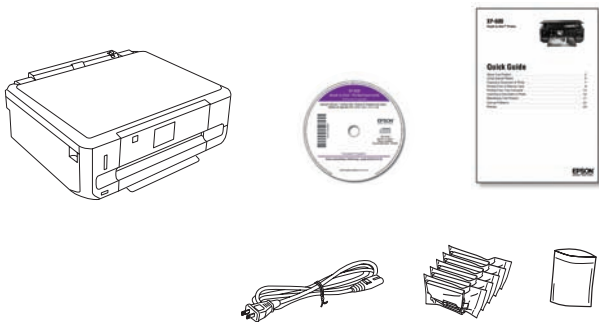
XP-600 Small-in-One™ Printer Start Here

Read these instructions before using your product.

Note for Spanish speakers/Nota para hispanohablantes:

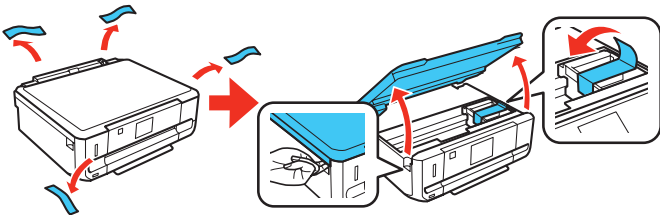
Para obtener instrucciones de configuración en español, consulte la *Guía de instalación* en www.epson.com/support/xp600sp (requiere una conexión a Internet).

1 Unpack

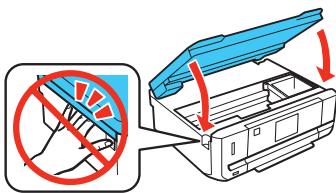


Caution: Do not open ink cartridge packages until you are ready to install the ink. Cartridges are vacuum packed to maintain reliability.

- 1 Remove all protective materials from the printer, including from inside the printer.



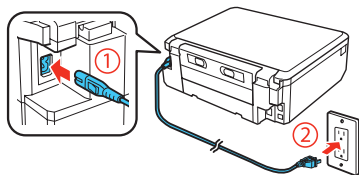
- 2 Lower the scanner unit.



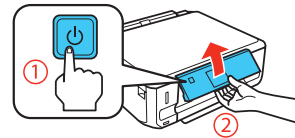
2 Turn on and adjust

- 1 Connect the power cord to the back of the printer and to an electrical outlet.

Caution: Do not connect to your computer yet.

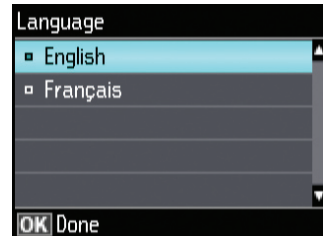


- 2 Press the power button, then adjust the control panel.



3 Select settings

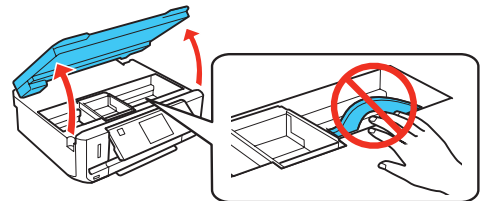
Press ▲ or ▼ to select your language, then press **OK**.



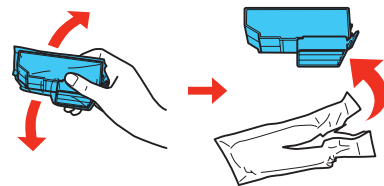
Note: You can change the language using the product's control panel. For more information, see the online *User's Guide*.

4 Install ink cartridges

- 1 Lift up the scanner unit.



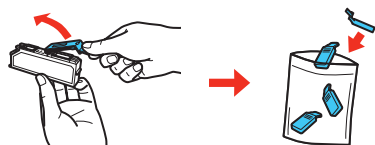
- 2 Gently shake the BK (black) ink cartridge only. Do not shake the PBK (photo black) cartridge or any of the other color ink cartridges. Unpack the ink cartridges.



Caution: Do not touch the areas shown below. Doing so may prevent normal operation and printing.

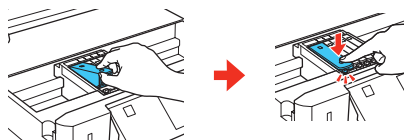


- 3** Remove the cap from each ink cartridge. Store the caps in the included plastic bag.

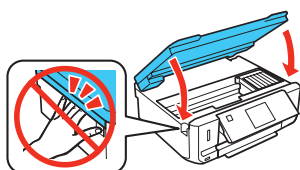


Note: Save the caps and use them to recap the ink cartridges after removing them for storage or disposal.

- 4** Insert the cartridges head first in the holder for each color. Press each cartridge down until it clicks.



- 5** Lower the scanner unit.



- 6** The printer starts priming the ink. This takes about 6 minutes. When you see a completion message on the printer's LCD screen, priming is complete.

Note: The cartridges included with the printer are designed for printer set up and not for resale. After some ink is used for priming, the rest is available for printing.

Caution: Don't turn off the printer or raise the scanner unit while the printer is priming or you'll waste ink.

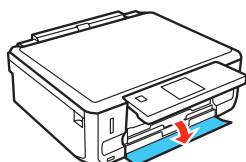
5 Load paper

The printer has 2 paper cassettes. You can load the following paper sizes:

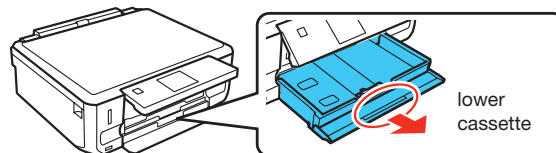
- Upper cassette (Cassette 1): 4 × 6- or 5 × 7-inch photo paper
- Lower cassette (Cassette 2): letter-size, A4, legal-size, or 8 × 10-inch paper. (See the instructions below for loading paper in the lower cassette.)

See the *Quick Guide* for instructions on loading paper in the upper cassette. See the online *User's Guide* for available paper types, sizes, loading capacity, and instructions for loading legal-size paper or envelopes.

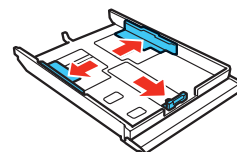
- 1** Lower the front cover (if it's not open already).



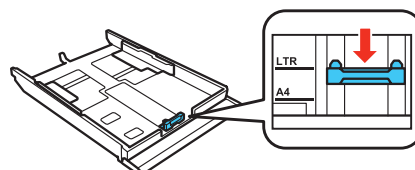
- 2** Pull on the front cover to pull out the lower paper cassette.



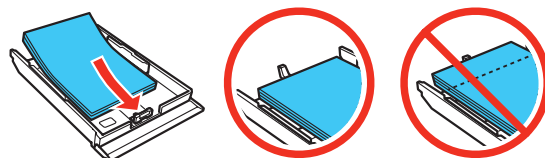
- 3** Slide the edge guides to the sides of the paper cassette.



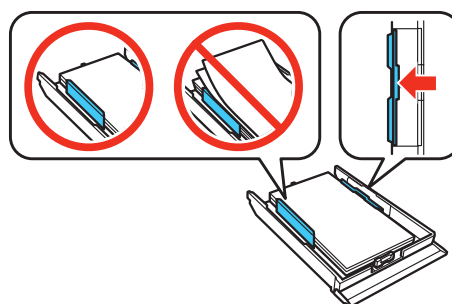
- 4** Set the front edge guide to the paper size you are using. Then insert paper with the glossy or printable side facedown.



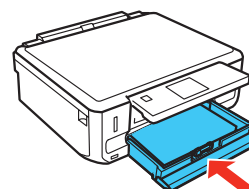
Note: Make sure the paper is loaded against the edge guide and not sticking out from the end of the cassette.



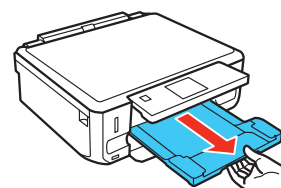
- 5** Slide the edge guides against the paper, but not too tight. Make sure the paper is under the tabs on the edge guides.



- 6** Keep the cassette flat as you insert it.



- 7** Pull out the output tray.

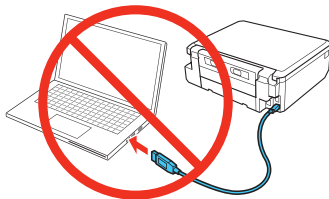


6 Install software

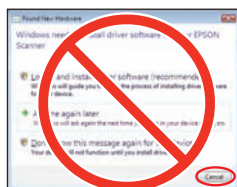
Note: If your computer does not have a CD/DVD drive, you can download the software from the Epson website (see “Epson technical support”).

Caution: Be sure to close your other programs, including any screen savers and virus protection software, before beginning this software installation.

- 1 Make sure the printer is **NOT CONNECTED** to your computer.




Windows®: If you see a Found New Hardware screen, click **Cancel** and disconnect the USB cable. You can't install your software that way.

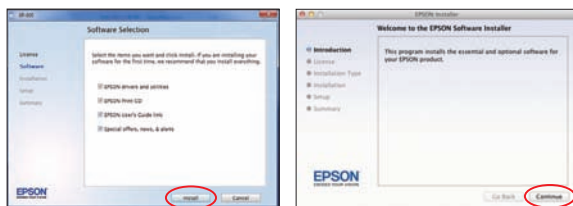


- 2 Insert the product CD.

- 3 **Windows:** If you see the AutoPlay window, click **Run Setup.exe**. If you see the User Account Control screen, click **Yes** or **Continue**.

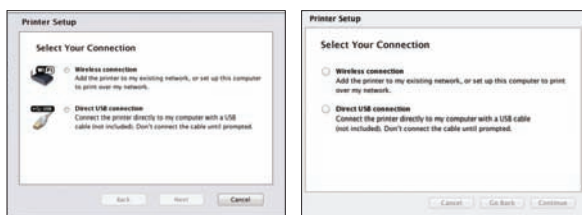
Mac OS X: Double-click the  **Epson** icon, if necessary.

- 4 Click **Install** (Windows) or **Continue** (Mac OS X) and follow the instructions on your computer screen.



- 5 When you see the Select Your Connection screen, check the “Connection options” section on this sheet for more information.

Choose your connection. Then click **Next** (Windows) or **Continue** (Mac OS X) and follow the instructions on your computer screen.



Connection options

Wireless connection

You must install the software on every computer from which you want to print. For the first installation, we recommend using a USB cable (not included) to simplify wireless setup. After the printer is connected to the network, you will be prompted to remove the cable.

If you're using Mac OS X 10.6.x, 10.7.x, or 10.8, or you don't have a USB cable, you will need to use the control panel on the printer to select wireless settings. Follow the instructions on your computer screen during software installation; they will explain how to connect the printer wirelessly this way.

Make sure you know your network name (SSID) and network password:

- Network name _____
- Network password _____

If you don't have this information, contact the person who set up your network.

To view how-to videos on setting up your printer's wireless connection, go to epson.com/support (U.S.) or epson.ca/support (Canada).

Direct USB connection

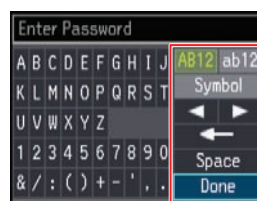
Make sure you have a USB cable (not included).

Any problems?

If you experience problems during setup, see below:

Network setup was unsuccessful.

- Make sure you select the right network name (SSID).
- If you see a firewall alert message, click **Unblock** or **Allow** to let setup continue.
- If your network has security enabled, make sure you enter your network password (WEP key or WPA passphrase) correctly. Passwords must be entered in the correct case.



Function buttons

Press ▲, ▼, ◀, or ▶ on the control panel to select a letter or function button on the screen. Then press **OK**.

Use the function buttons to select uppercase (**AB12**), lowercase (**ab12**), symbols, spaces, or to delete characters (◀).

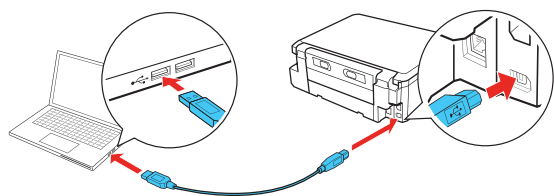
When you're finished, select **Done** and press **OK**.

You see error messages on the printer's screen.

See your *Quick Guide* for troubleshooting information.

Setup is unable to find my printer after connecting it with a USB cable.

Make sure it is securely connected as shown:



Any questions?

Quick Guide

Basic steps for copying, printing, and scanning.



On-screen help with your software

Select **Help** or **?** when you're using your software.

User's Guide

Click the icon on your desktop (or in the **Applications/Epson Software/Guide** folder in Mac OS X) to access the online *User's Guide*, how-to videos, software downloads, EPSON® Supplies Central®, and more (requires an Internet connection). If you don't have a User's Guide icon, you can install it from the CD or go to the Epson website (see "Epson technical support").



Epson technical support

Visit epson.com/support (U.S.) or epson.ca/support (Canada) where you can download drivers, view manuals and how-to videos, get FAQs, or e-mail Epson.

You may also speak with a support specialist by calling (562) 276-4382 (U.S.) or (905) 709-3839 (Canada), 6 AM to 8 PM, Pacific Time, Monday through Friday, and 7 AM to 4 PM, Pacific Time, Saturday.

Days and hours of support are subject to change without notice. Toll or long distance charges may apply.

Recycling

Epson offers a recycling program for end of life hardware and ink cartridges. Please go to www.epson.com/recycle for information on how to return your products for proper disposal.

Need paper and ink?

Try EPSON specialty papers with Claria® ink for better than photo lab quality results. For the right supplies at the right time, you can purchase them at EPSON Supplies Central at www.epson.com/ink3 (U.S. sales) or www.epson.ca (Canadian sales). You can also purchase supplies from an EPSON authorized reseller. To find the nearest one, call 800-GO-EPSON (800-463-7766).

DESIGNED *for* EXCELLENCE™

EPSON printers, ink and specialty papers.

Genuine EPSON paper

Epson offers a wide variety of papers to meet your needs; visit EPSON Supplies Central for more information.



Ultra Premium Photo Paper Glossy
Instant-drying high gloss paper for long-lasting photos, suitable for framing.

Genuine EPSON inks



Look for the numbers below to find your cartridges. It's as easy as remembering your number!



XP-600 replacement ink cartridges

	Color	Standard-capacity	High-capacity
	Photo Black	273	273XL
	Black	273	273XL
	Cyan	273	273XL
	Magenta	273	273XL
	Yellow	273	273XL

EPSON Connect™ Solutions, AirPrint, and Google Cloud Print™



Print and scan from anywhere. Use your smartphone or tablet to print photos or documents while on the go. Learn more at www.epson.com/connect.



EPSON, Claria, and Supplies Central are registered trademarks, EPSON Connect is a trademark, and EPSON Exceed Your Vision is a registered logomark of Seiko Epson Corporation. Designed for Excellence and Small-in-One are trademarks of Epson America, Inc.

AirPrint is a trademark of Apple Inc.

General Notice: Other product names used herein are for identification purposes only and may be trademarks of their respective owners. Epson disclaims any and all rights in those marks.

This information is subject to change without notice.

© 2013 Epson America, Inc. 3/13

CPD-37277R1

Printed in XXXXXX